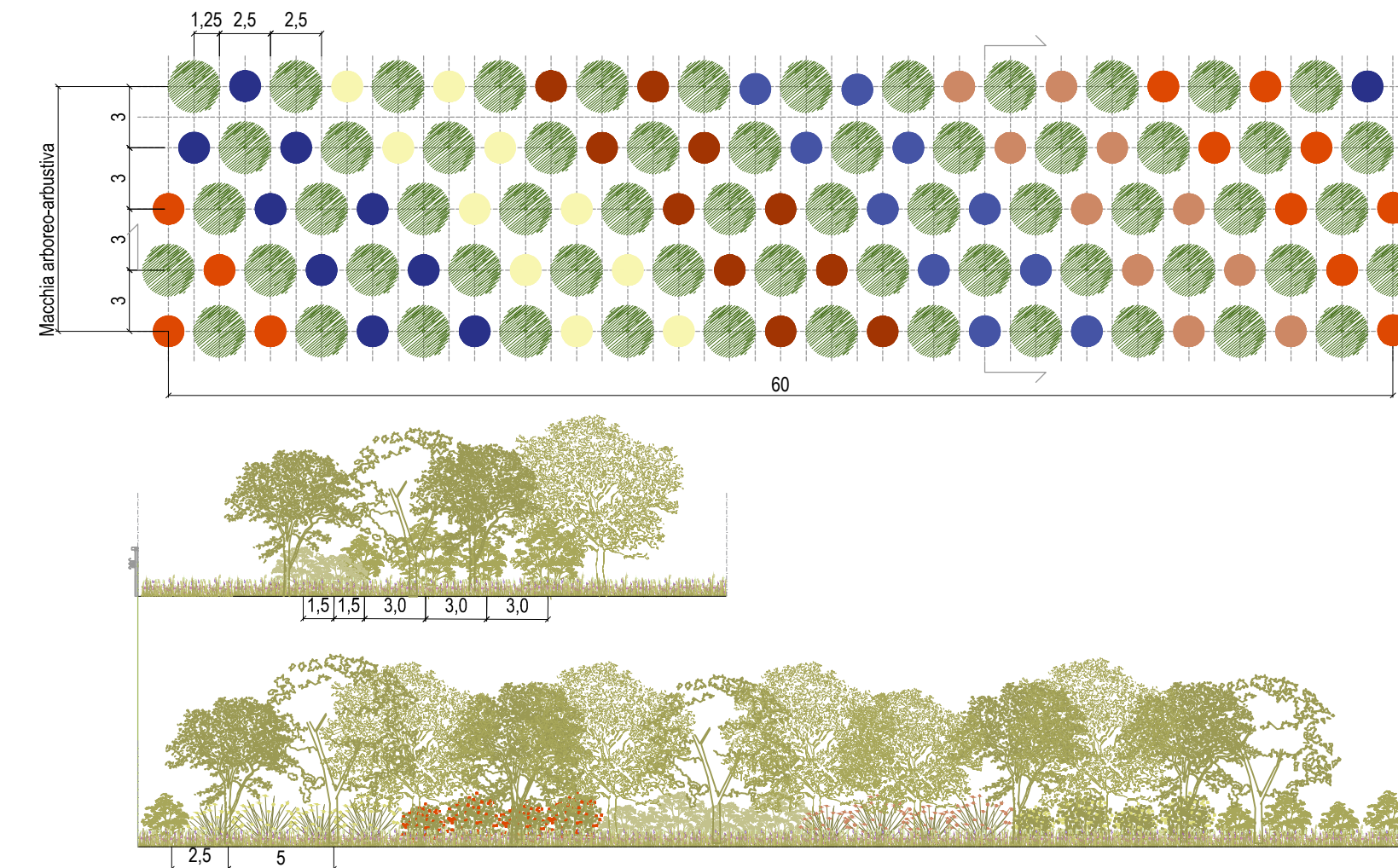
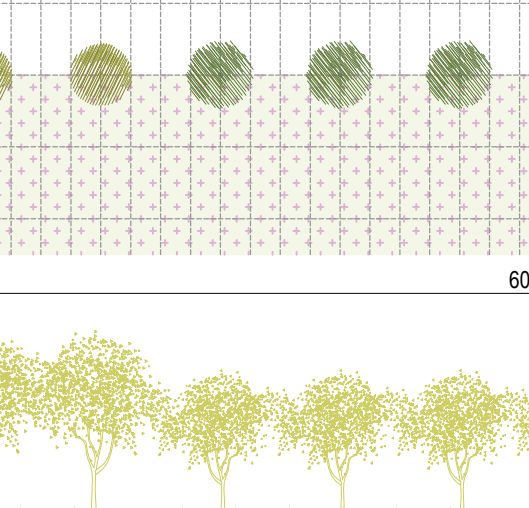
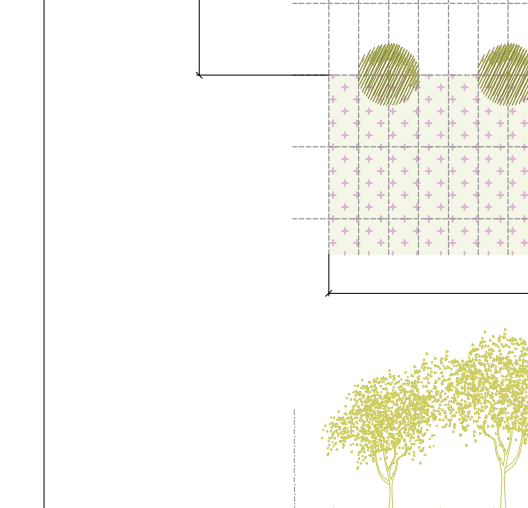


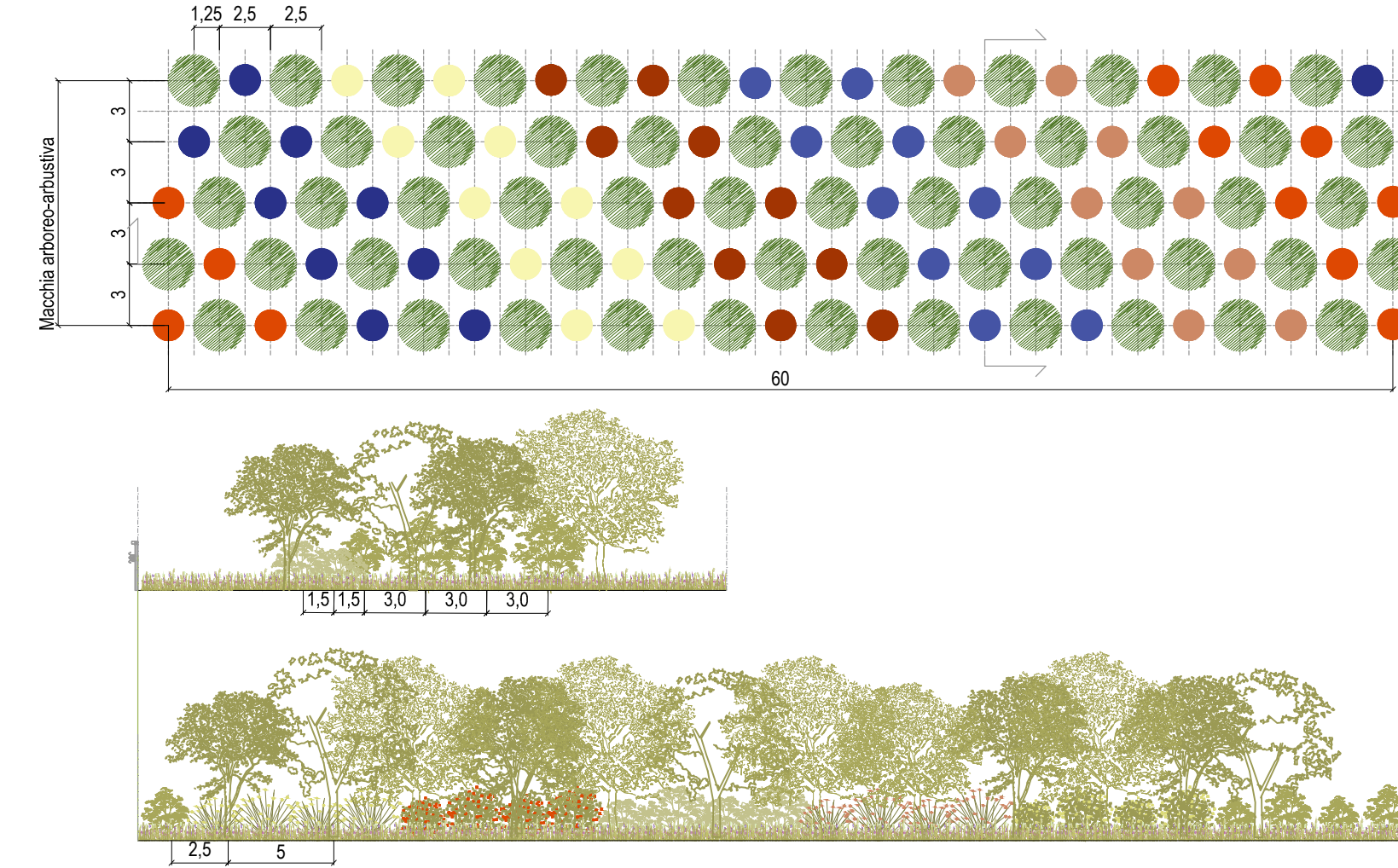
RIFORESTAZIONE ARBOREO-ARBUSTIVA MONOSPECIFICA_PINETA



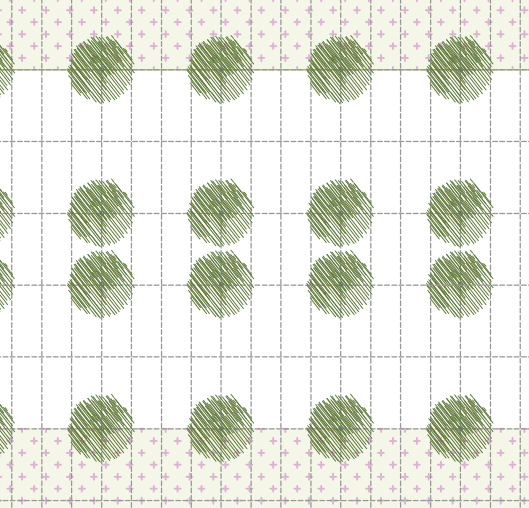
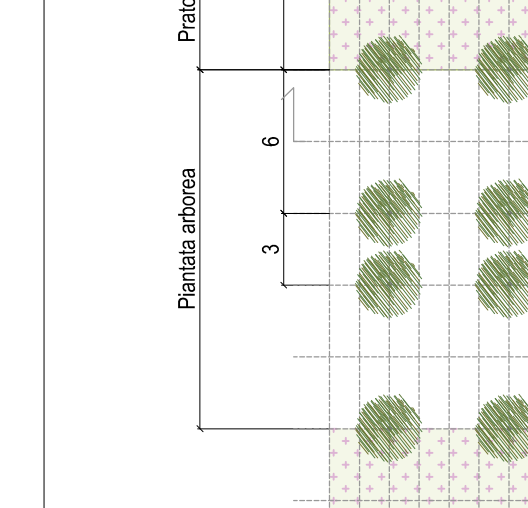
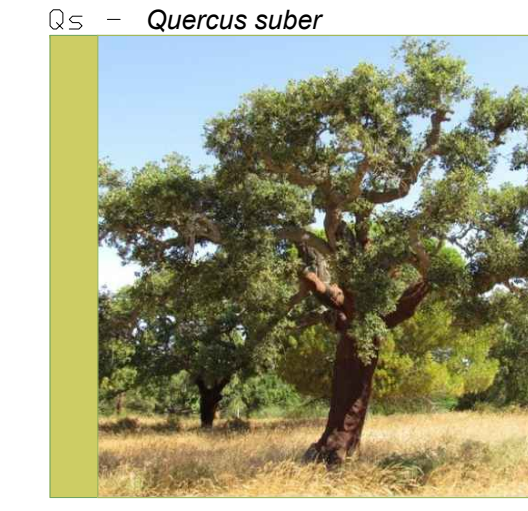
- ALBERI**
- Ph - *Pinus halepensis*_100%
- ARBUSTI**
- Phl - *Phillyrea latifolia*_16%
 - Em - *Erica multiflora*_16%
 - Cs - *Cistus salvifolius*_17%
 - Pl - *Pistacia lentiscus*_17%
 - Sn - *Sambucus nigra*_16%
 - Cn - *Cistus monspeliensis*_16%



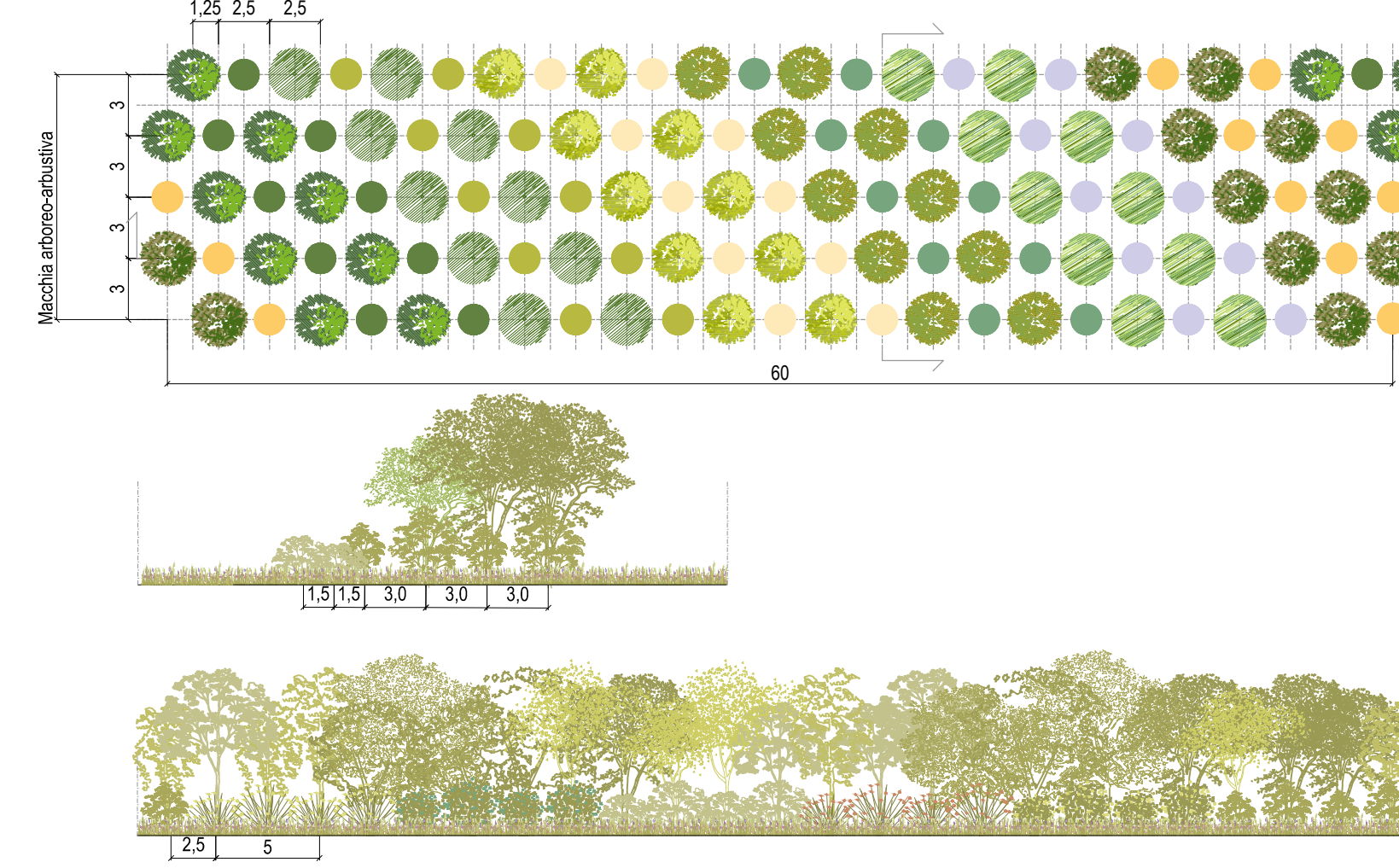
RIFORESTAZIONE ARBOREO-ARBUSTIVA MONOSPECIFICA_SUGHERETA



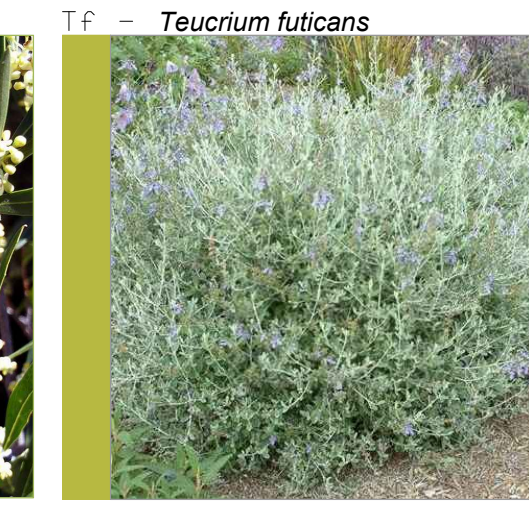
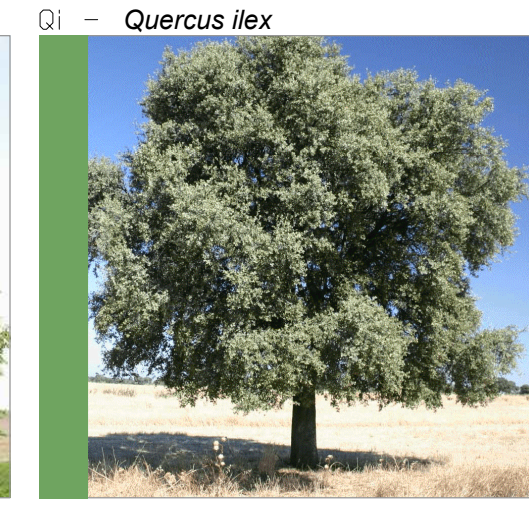
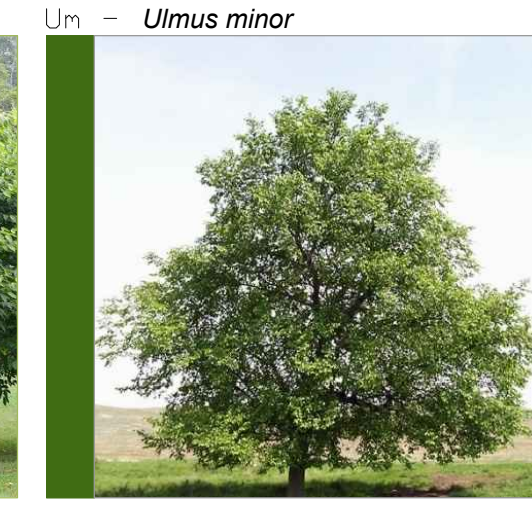
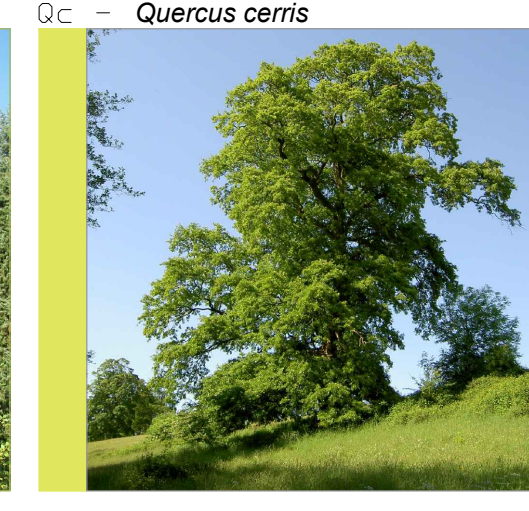
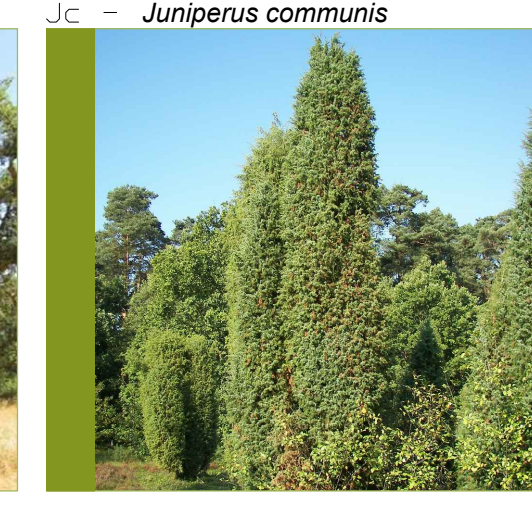
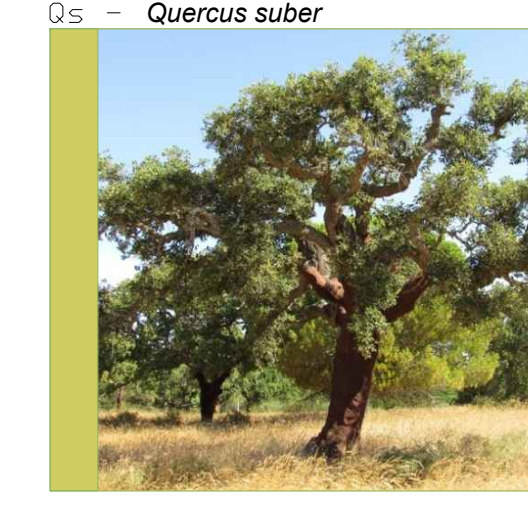
- ALBERI**
- Qs - *Quercus suber*_100%
- ARBUSTI**
- Phl - *Phillyrea latifolia*_16%
 - Em - *Erica multiflora*_16%
 - Cs - *Cistus salvifolius*_17%
 - Pl - *Pistacia lentiscus*_17%
 - Sn - *Sambucus nigra*_16%
 - Cn - *Cistus monspeliensis*_16%



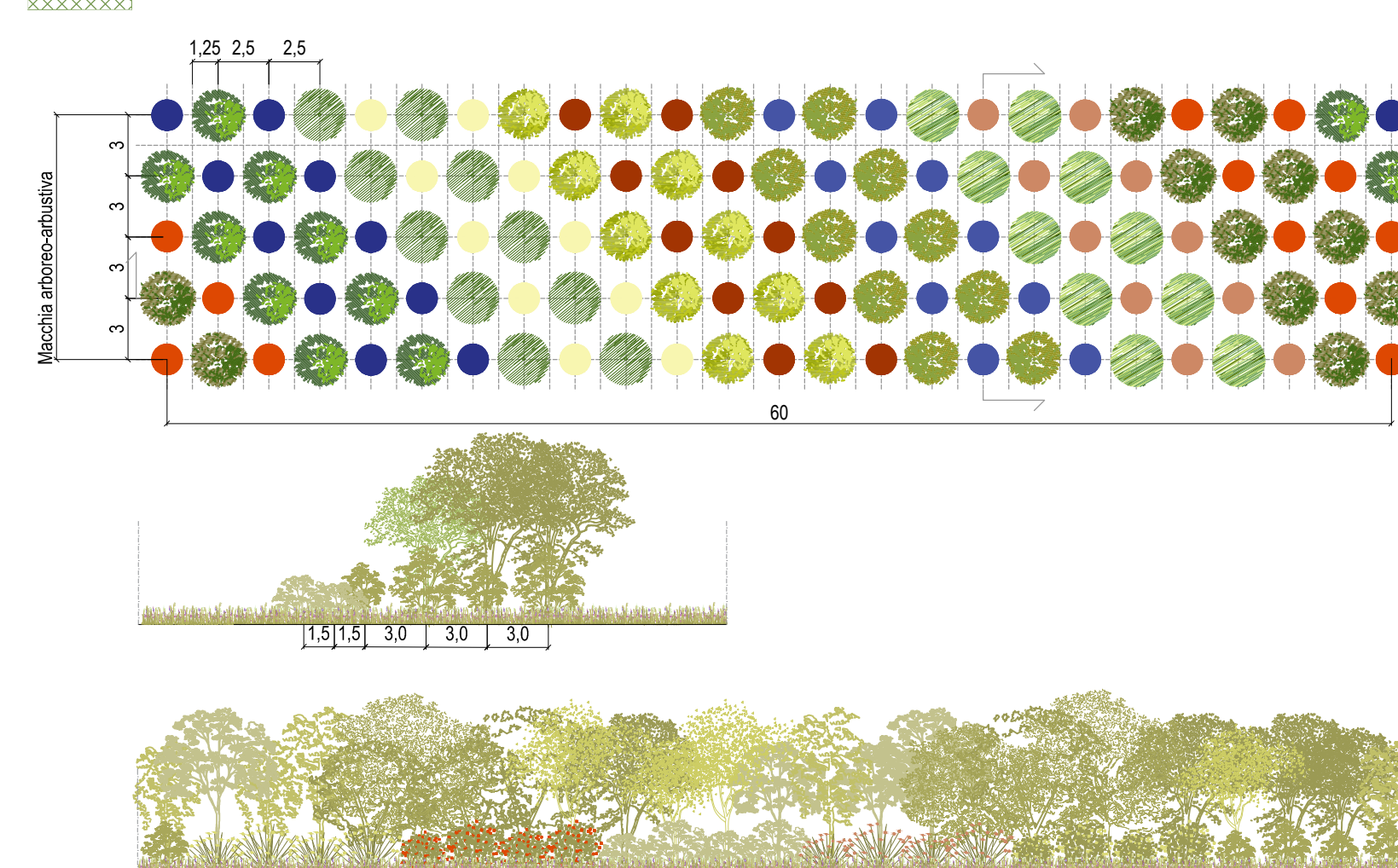
RIFORESTAZIONE ARBOREO- ARBUSTIVA PLURISPECIFICA



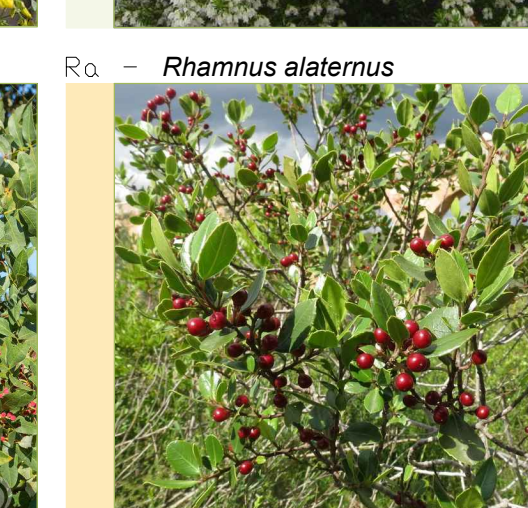
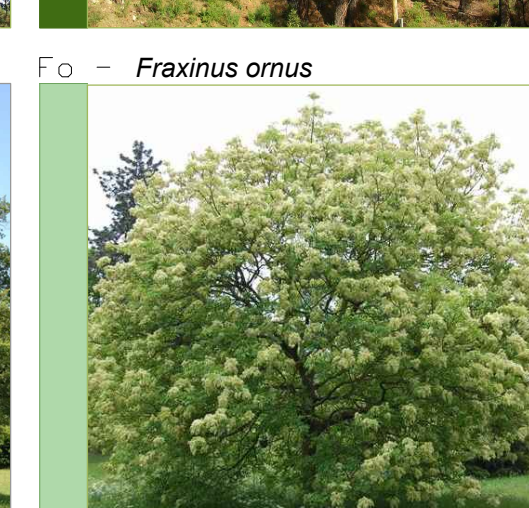
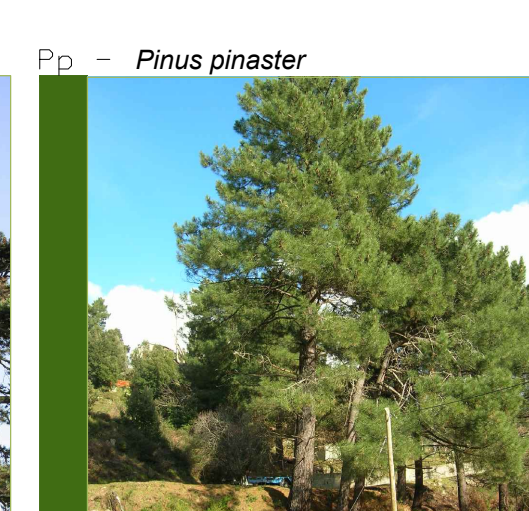
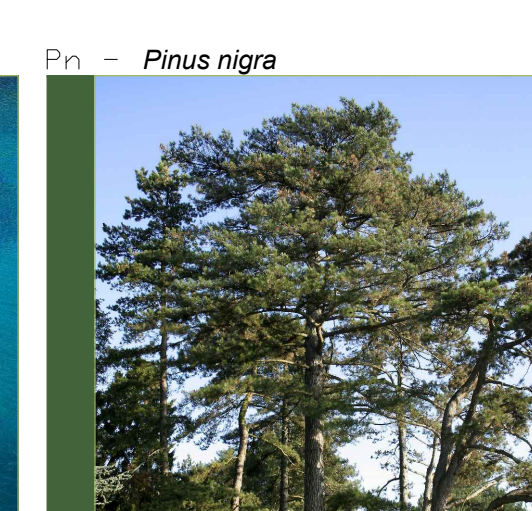
- ALBERI**
- Qs - *Quercus suber*_16%
 - Jc - *Juniperus communis*_16%
 - Qc - *Quercus cemis*_17%
 - Oc - *Ostrya carpinifolia*_16%
 - Um - *Ulmus minor*_16%
 - Ql - *Quercus ilex*_16%
- ARBUSTI**
- Au - *Arbutus unedo*_16%
 - Ro - *Rosmarinus officinalis*_16%
 - Ps - *Prunus spinosa*_17%
 - Vt - *Viburnum tinus*_16%
 - Sj - *Spartium junceum*_16%
 - Tf - *Teucrium fruticosum*_17%



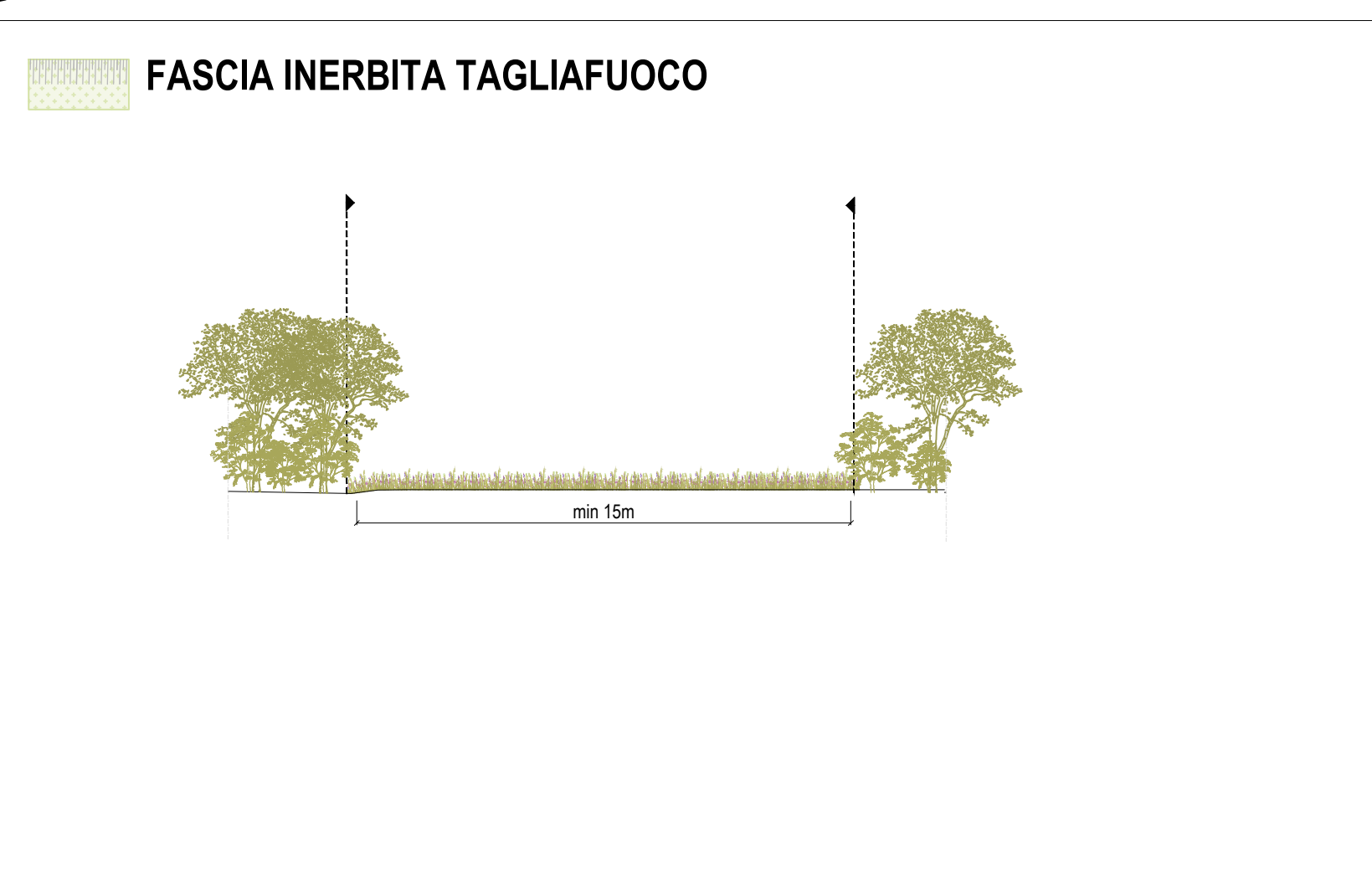
RIFORESTAZIONE ARBOREO- ARBUSTIVA PLURISPECIFICA



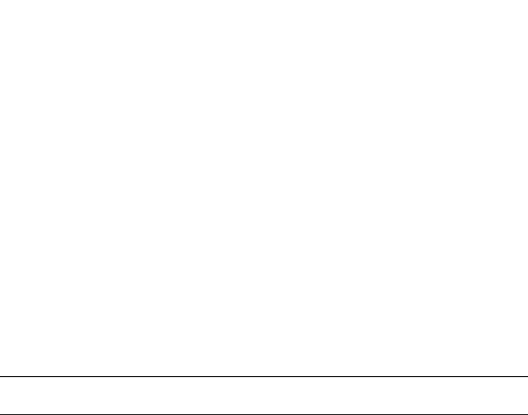
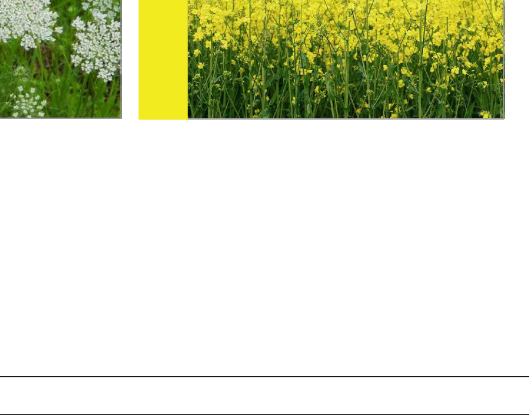
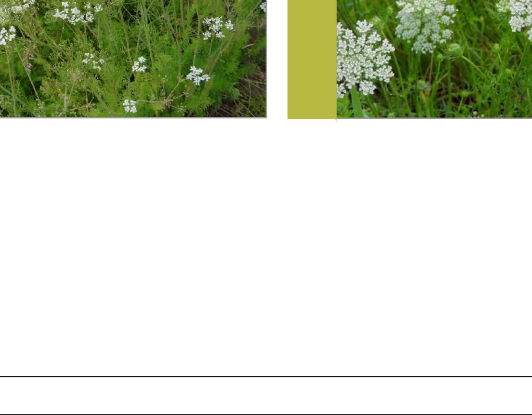
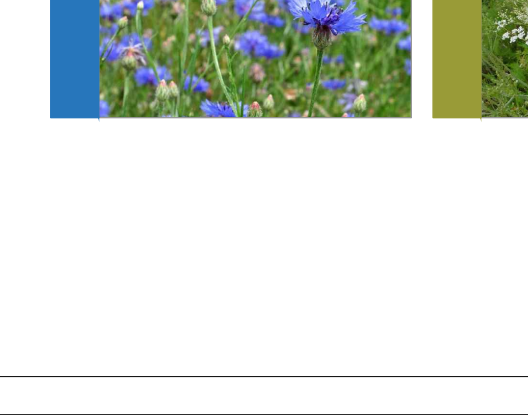
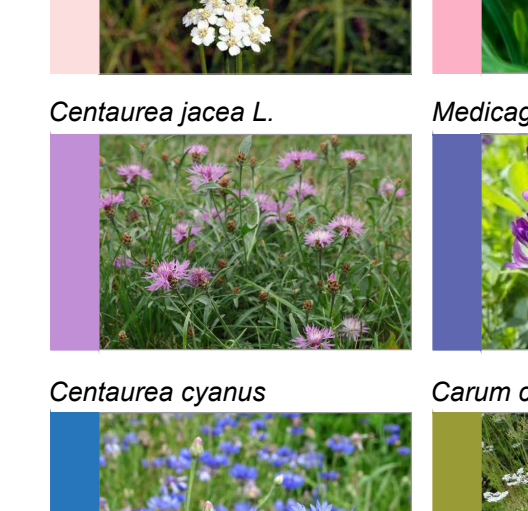
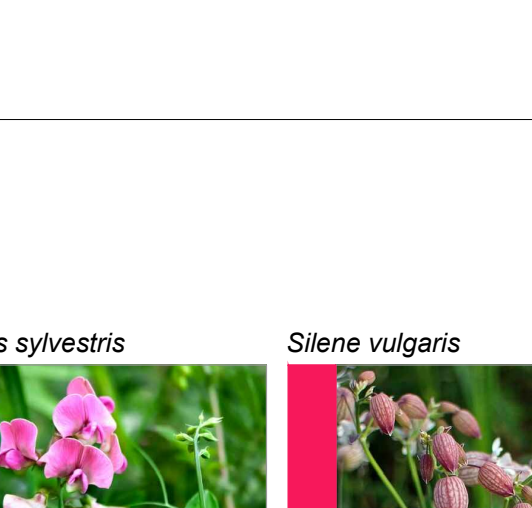
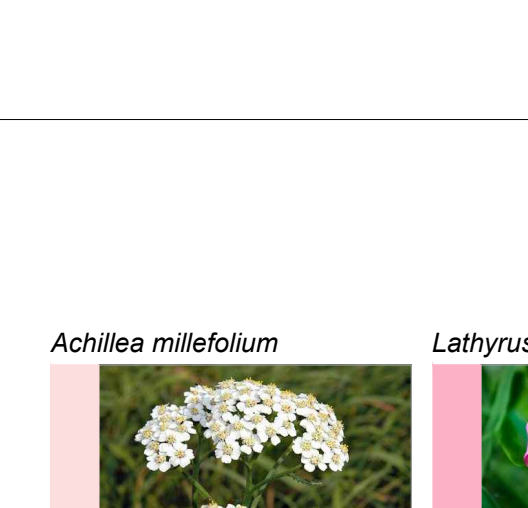
- ALBERI**
- Ph - *Pinus halepensis*_16%
 - Phn - *Pinus nigra*_16%
 - Pp - *Pinus pinaster*_17%
 - Ql - *Quercus ilex*_17%
 - Qp - *Quercus pubescens*_16%
 - Fo - *Fraxinus ornus*_16%
- ARBUSTI**
- Cv - *Cytisus villosus*_16%
 - Ea - *Erica arborea*_16%
 - Es - *Erica scoparia*_17%
 - Pt - *Pistacia terebinthus*_17%
 - Ra - *Rhamnus alaternus*_16%
 - Mc - *Myrtus communis*_16%



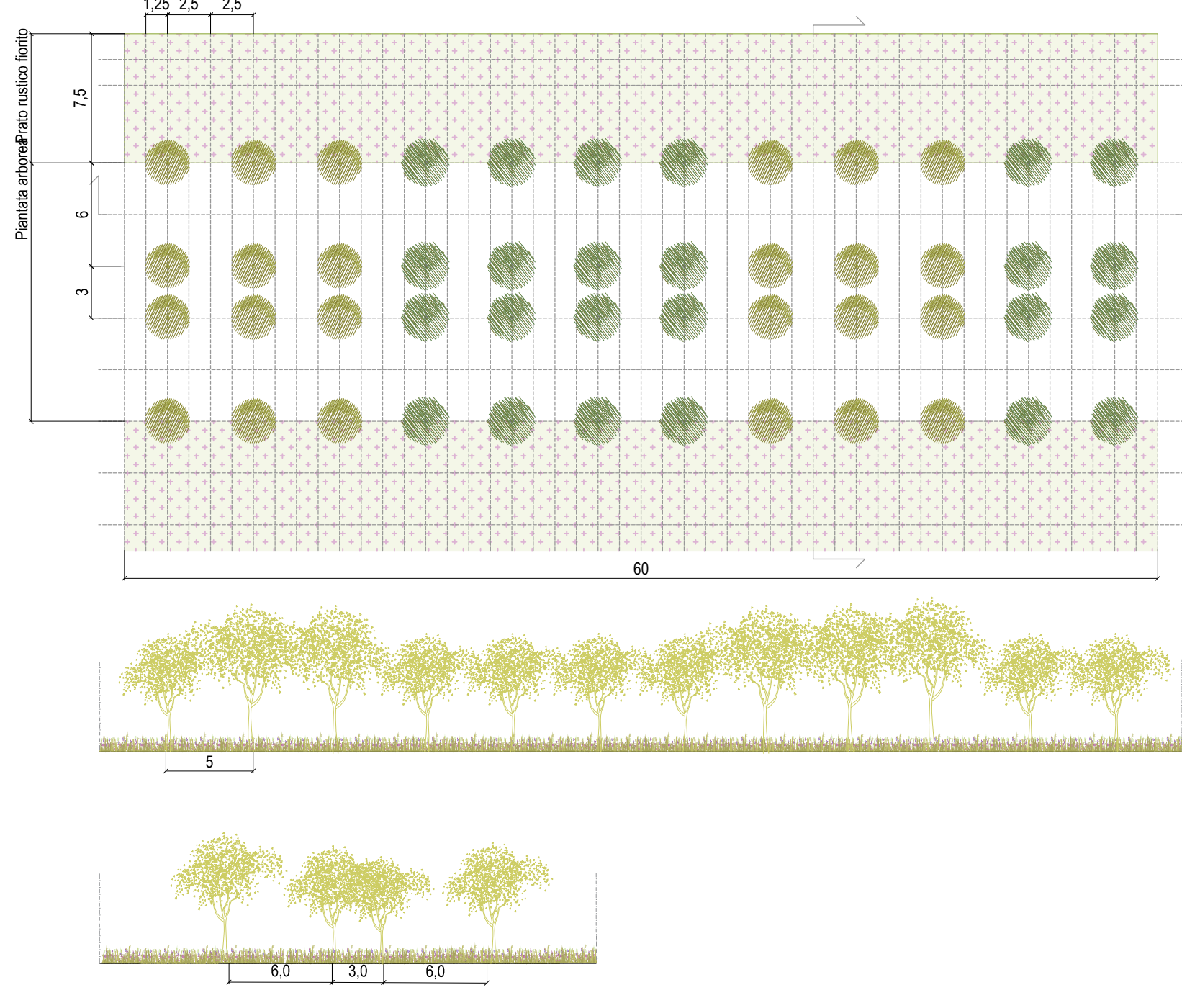
FASCIA INERBITA TAGLIAFUOCO



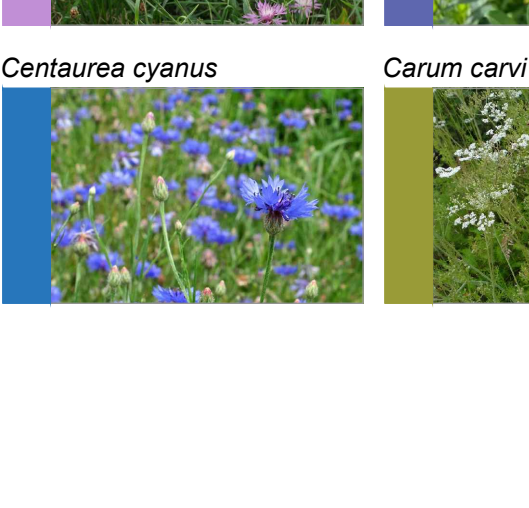
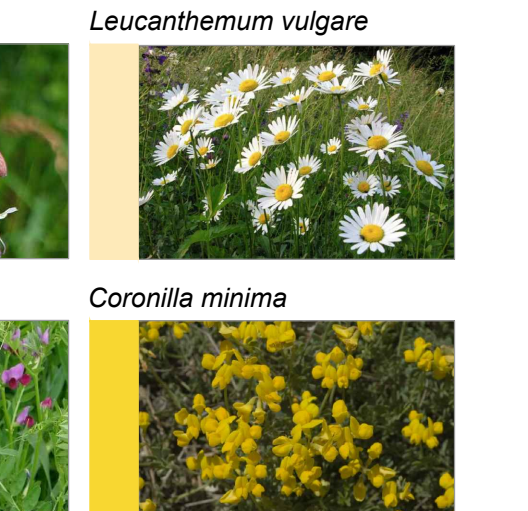
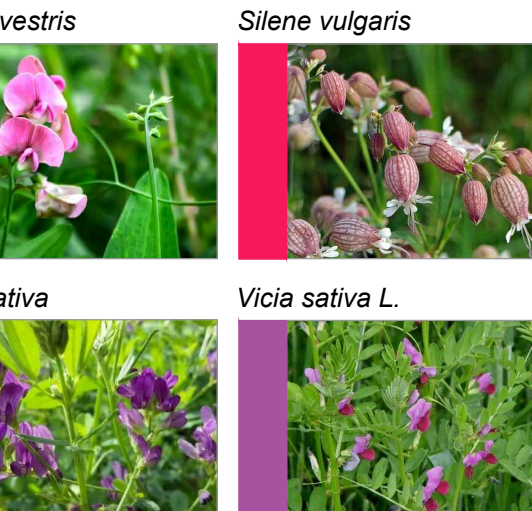
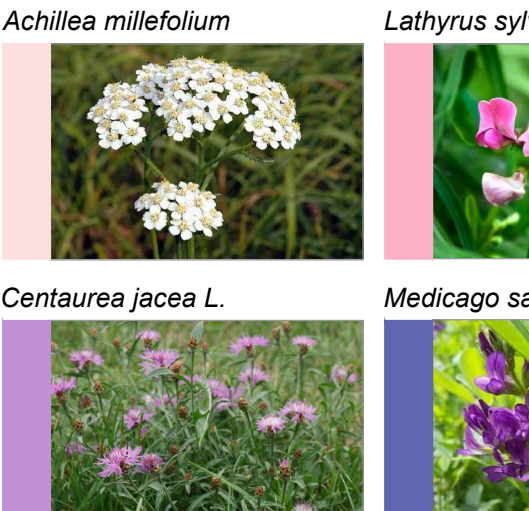
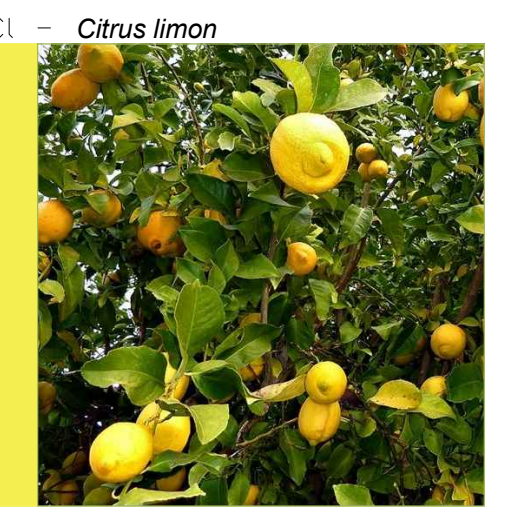
- MIX PRATO RUSTICO**
- Achillea millefolium*
 - Allium subulatum*
 - Brassica fruticulosa*
 - Carum carvi* L.
 - Centauria cyanus*
 - Centauria jacea* L.
 - Coronilla minima*
 - Cosmos bipinnatus*
 - Medicago sativa*
 - Micromera graeca*
 - Papaver* L.
 - Pimpinella saxifraga* L.
 - Silene vulgaris*
 - Vicia sativa* L.
- ALBERI**
- Dactylis glomerata* L.
 - Daucus carota* L.
 - Festuca arundinacea*
 - Ferula communis*
 - Lathyrus pratensis* L.
 - Lathyrus sylvestris*
 - Leucanthemum vulgare*
 - Lolium perenne*



AGROFORESTAZIONE_AGRUMETO



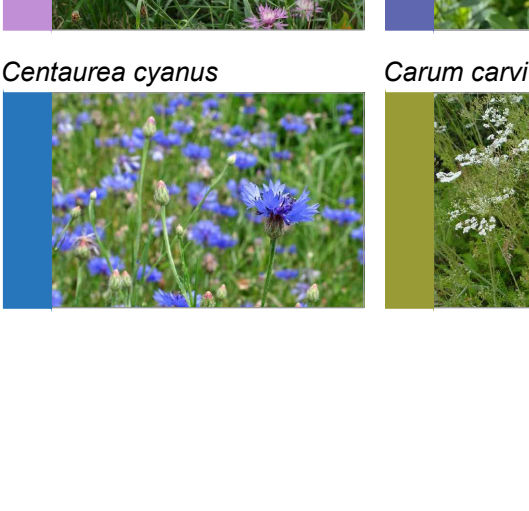
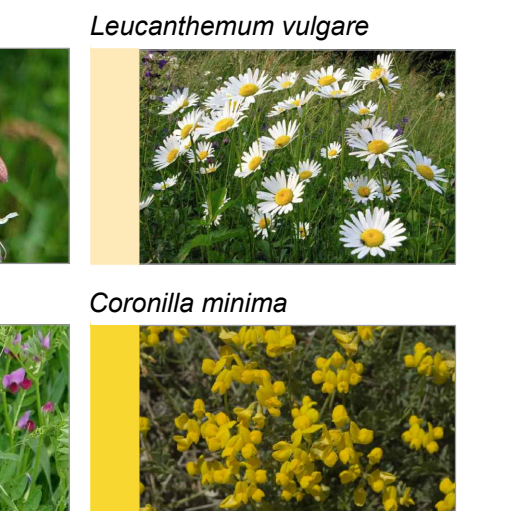
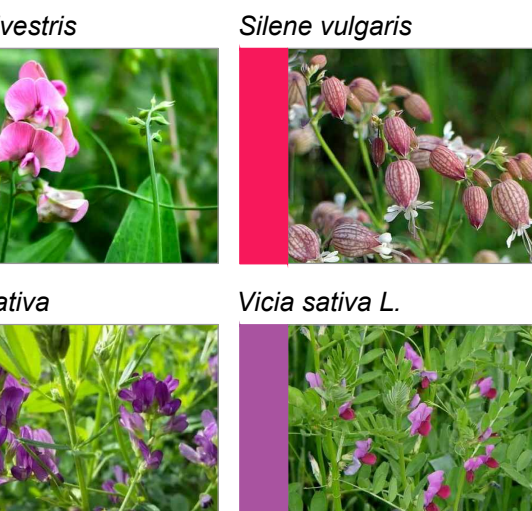
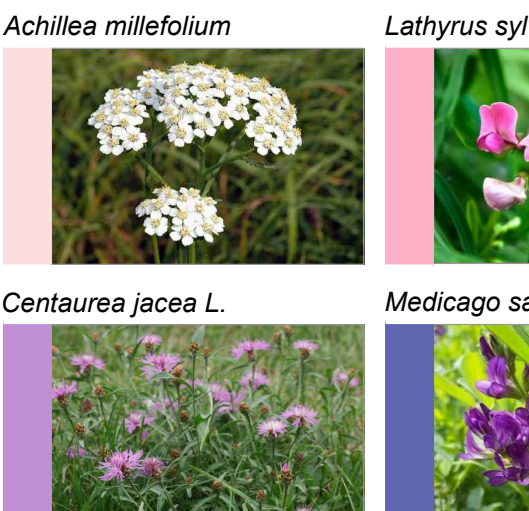
- ALBERI**
- Ci - *Citrus limon*
 - Cb - *Citrus bergamia*_40%
- MIX PRATO RUSTICO**
- Achillea millefolium*
 - Brassica napus*
 - Carum carvi* L.
 - Centauria cyanus*
 - Centauria jacea* L.
 - Coronilla minima*
 - Cosmos bipinnatus*
 - Dactylis glomerata* L.
 - Daucus carota* L.
 - Festuca arundinacea*
 - Lathyrus pratensis* L.
 - Lathyrus sylvestris*
 - Leucanthemum vulgare*
 - Lolium perenne*
 - Medicago sativa*
 - Papaver* L.
 - Pimpinella saxifraga* L.
 - Phalaris arundinacea*
 - Silene vulgaris*
 - Vicia sativa* L.



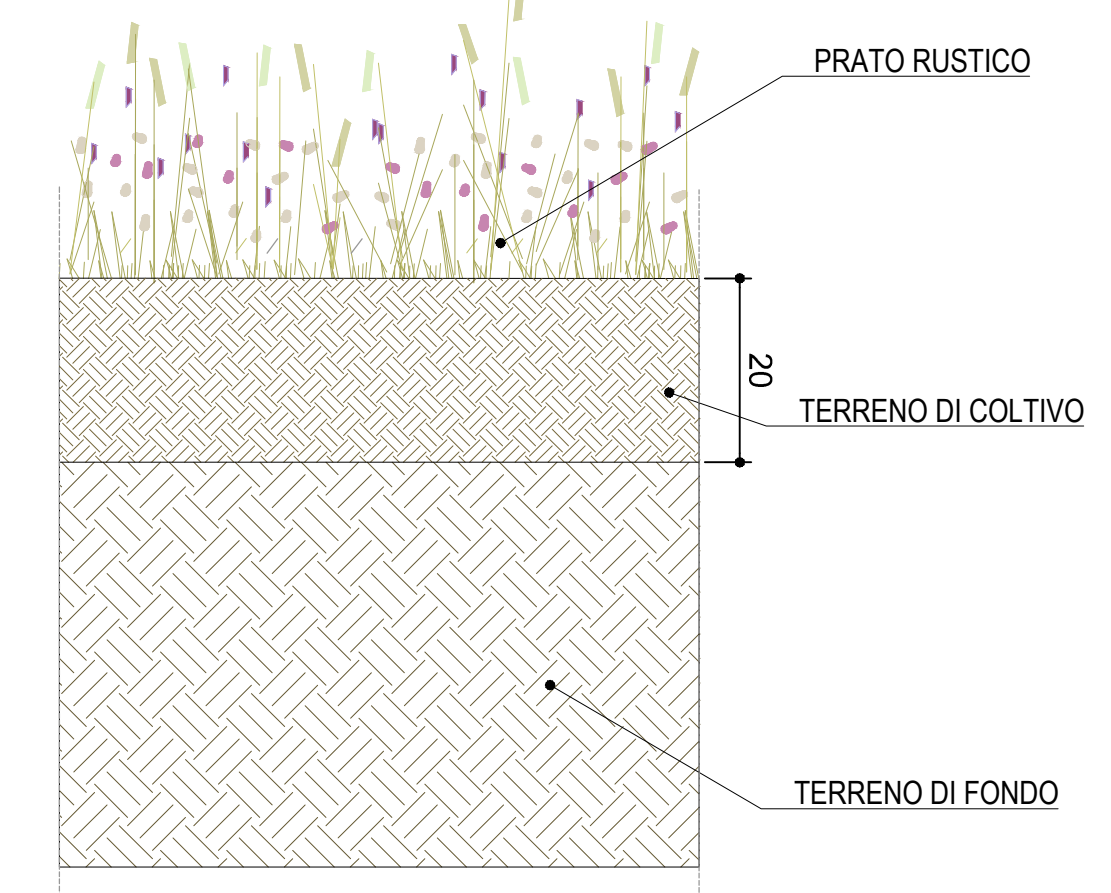
AGROFORESTAZIONE_ULIVETO



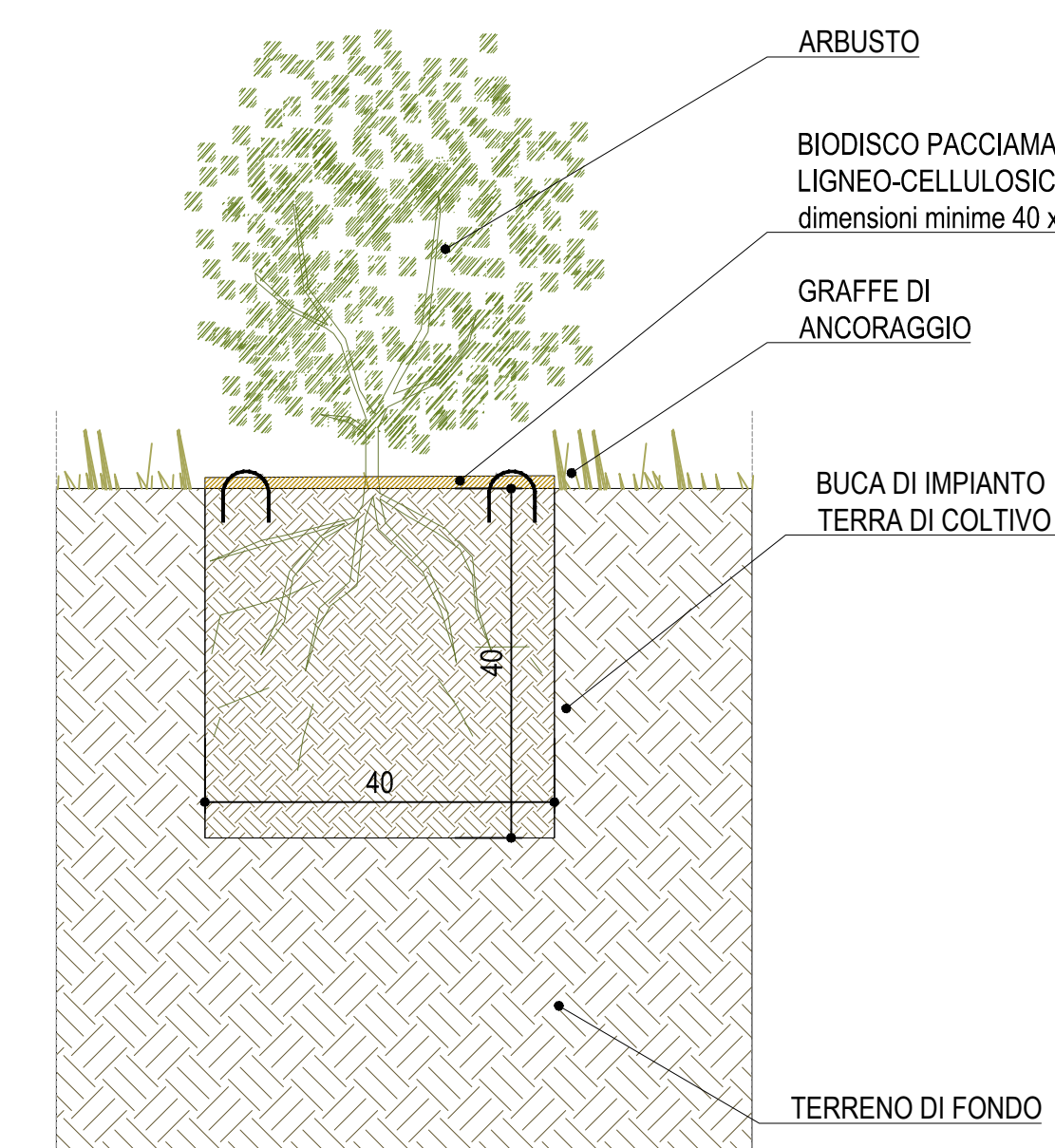
- ALBERI**
- De - *Olea europaea*_100%
- MIX PRATO RUSTICO**
- Achillea millefolium*
 - Brassica napus*
 - Carum carvi* L.
 - Centauria cyanus*
 - Centauria jacea* L.
 - Coronilla minima*
 - Cosmos bipinnatus*
 - Dactylis glomerata* L.
 - Daucus carota* L.
 - Festuca arundinacea*
 - Lathyrus pratensis* L.
 - Lathyrus sylvestris*
 - Leucanthemum vulgare*
 - Lolium perenne*
 - Medicago sativa*
 - Papaver* L.
 - Pimpinella saxifraga* L.
 - Phalaris arundinacea*
 - Silene vulgaris*
 - Vicia sativa* L.



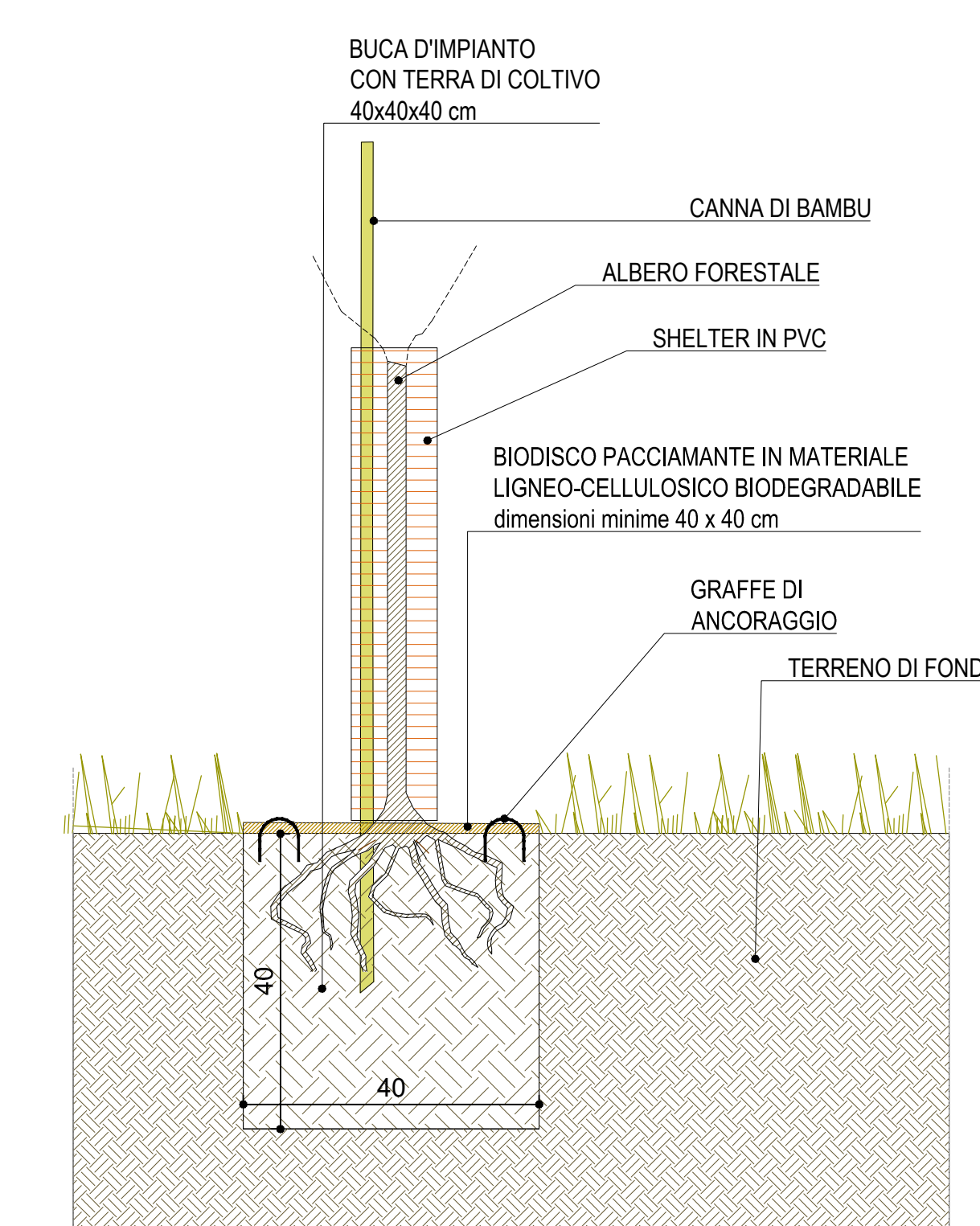
03 SESTI D'IMPIANTO E SEZIONI TIPOLOGICHE DELLE AGROFORESTAZIONI



DETTAGLIO PRATO RUSTICO - scala 1:10



DETTAGLIO ARBUSTO - scala 1:10



DETTAGLIO ALBERO FORESTALE - scala 1:10

04 DETTAGLI DELLE MODALITA' DI IMPIANTO

Stretto di Messina
 EuroLink
 Consulenza per la progettazione, realizzazione e gestione del collegamento stabile tra lo Scalo e il Corfaro (legge n° 1198 del 17/12/1971, modificato dal D.lgs. n° 114 del 24/04/2003, legge n. 58 del 28/05/2003)

PONTE SULLO STRETTO DI MESSINA
PROGETTO DEFINITIVO
 Documentazione Integrativa ai sensi della Legge n. 58 del 28.05.2003

EUROLINK S.p.A.
 WEBUILD ITALIA S.p.A. (Mandataria)
 SOCIETA' ITALIANA PER CONDOTTE D'ACQUA S.p.A. (Mandatario)
 COOPERATIVA MURATORI E CEMENTISTI - C.M.C. di Ravenna Soc. Coop. a.r.l. (Mandatario)
 SACYR S.A.U. (Mandatario)
 ISHIKAWAJIMA - HARRIMA HEAVY INDUSTRIES CO. LTD. (Mandatario)
 A.C.I. S.C.P.A. - CONSORZIO STABILE (Mandatario)

IL PROGETTISTA
 EuroLink
 Dott. Ing. M. Orlandini
 Direttore Tecnico
 n° 18340

PRESTAZIONI SPECIALISTICHE
 COWI
 Dott. Ing. M. Orlandini
 Direttore Tecnico
 n° 18340

IL CONTRINTE GENERALE
 Amministratore Delegato
 Dott. F. di Pietro

STRETTO DI MESSINA
 Amministratore Delegato
 Dott. P. Ciucci

GENERALE AMBIENTE
STUDIO D'IMPATTO AMBIENTALE
QUADRO DI RIFERIMENTO PROGETTUALE
 AMR1056

PRATO Costituzione di un Piano di Riforestazione Intelligente nelle aree soggette da incendi - Aspetti metodologici e tipologie di progetto

REV.	DATA	DESCRIZIONE	REDAATTO	VERIFICATO	APPROVATO
A	16/10/2023	EMISSIONE DEFINITIVA	SANERUCO	BAUCCO	ORLANDINI
B	15/11/2023	EMISSIONE PER AGGIORNAMENTO	SANERUCO	BAUCCO	ORLANDINI
C	20/07/2024	EMISSIONE PER AGGIORNAMENTO CARTICLIO	SANERUCO	BAUCCO	ORLANDINI

02 DESCRIZIONE DELLA FASCIA TAGLIAFUOCO