

PONTE SULLO STRETTO DI MESSINA



PROGETTO DEFINITIVO ALTERNATIVE AI SITI DI DEPOSITO

(Richieste CTVA del 22/12/2011 Prot. CTVA/2011/4534 e del 16/03/2012 Prot. CTVA/2012/1012)

EUROLINK S.C.p.A.

IMPREGILO S.p.A.
SOCIETÀ ITALIANA PER CONDOTTE D'ACQUA S.p.A.
COOPERATIVA MURATORI E CEMENTISTI - C.M.C. DI RAVENNA SOC. COOP. A.R.L.
SACYR S.A.U.
ISHIKAWAJIMA - HARIMA HEAVY INDUSTRIES CO. LTD
A.C.I. S.C.P.A. - CONSORZIO STABILE

 IL PROGETTISTA Dott. Ing. D. Spoglianti Ordine Ing. Milano n°A 20953	IL CONTRAENTE GENERALE PROJECT MANAGER (Ing. P.P. Marcheselli)	STRETTO DI MESSINA Direttore Generale Ing. G. Fiammenghi	STRETTO DI MESSINA Amministratore Delegato Dott. P.Ciucci
Firmato digitalmente ai sensi dell' "Art.21 del D.Lgs. 82/2005"			

Unità Funzionale Tipo di sistema Raggruppamento di opere/attività Opera - tratto d'opera - parte d'opera Titolo del documento	GENERALE AMBIENTE STUDIO D'IMPATTO AMBIENTALE QUADRO DI RIFERIMENTO AMBIENTALE - ATMOSFERA SCHEDATURA DATI METEOROLOGICI E DI INQUINAMENTO ATMOSFERICO	AMV0544_F0
---	--	------------

CODICE	C	G	0	7	0	0	P	S	H	V	G	A	M	I	A	Q	3	0	0	0	0	0	0	1	0	F0
--------	---	---	---	---	---	---	---	---	---	---	---	---	---	---	---	---	---	---	---	---	---	---	---	---	---	----

REV	DATA	DESCRIZIONE	REDATTO	VERIFICATO	APPROVATO
F0	31/05/2012	Emissione finale	M. BATTISTON	M. SALOMONE	D. SPOGLIANTI

		<p align="center">Ponte sullo Stretto di Messina PROGETTO DEFINITIVO Alternative ai siti di deposito</p>		
<p align="center">SCHEDATURA DATI METEOROLOGICI E DI INQUINAMENTO ATMOSFERICO</p>	<p><i>Codice documento</i> AMV0544_F0.doc</p>	<p><i>Rev</i> F0</p>	<p><i>Data</i> 31/05/2012</p>	

INDICE

INDICE	3
PREMESSA.....	4
1 RICOSTRUZIONE CAMPI DI VENTO - ANNO 2009	5
2 DATI INQUINAMENTO ATMOSFERICO	56

		Ponte sullo Stretto di Messina PROGETTO DEFINITIVO Alternative ai siti di deposito	
SCHEDATURA DATI METEOROLOGICI E DI INQUINAMENTO ATMOSFERICO	<i>Codice documento</i> AMV0544_F0.doc	<i>Rev</i> F0	<i>Data</i> 31/05/2012

PREMESSA

Nel presente elaborato si riportano le analisi dei dati meteo e degli attuali livelli di inquinamento atmosferico utilizzati per la definizione del quadro ambientale ante operam relativo alla componente atmosfera.

In particolare sono state oggetto di analisi le seguenti fonti:

RICOSTRUZIONE CAMPI DI VENTO – ANNO 2009

Fonte: Dataset LAMA - Servizio IdroMeteoClima ARPA Emilia Romagna

DATI INQUINAMENTO ATMOSFERICO

Fonte: Rete di monitoraggio dell'Inquinamento atmosferico delle città di Messina e Reggio Calabria

		<p align="center">Ponte sullo Stretto di Messina PROGETTO DEFINITIVO Alternative ai siti di deposito</p>	
<p align="center">SCHEDATURA DATI METEOROLOGICI E DI INQUINAMENTO ATMOSFERICO</p>	<p><i>Codice documento</i> AMV0544_F0.doc</p>	<p><i>Rev</i> F0</p>	<p><i>Data</i> 31/05/2012</p>

1 RICOSTRUZIONE CAMPI DI VENTO - ANNO 2009

Fonte: Dataset LAMA Servizio IdroMeteoClima ARPA Emilia Romagna

Parametri rappresentati:

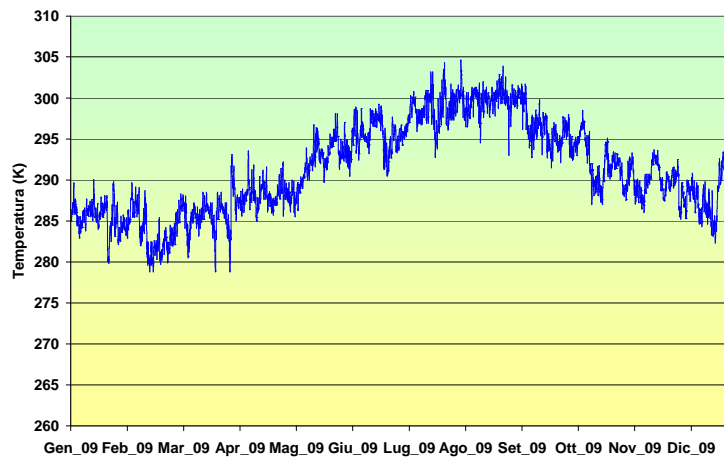
- andamento delle temperatura oraria [K];
- distribuzione delle classi di stabilità atmosferica, annuale e stagionale;
- distribuzione delle altezze di rimescolamento, annuale e stagionale [m];
- classi di velocità del vento;
- rosa del vento stagionale.



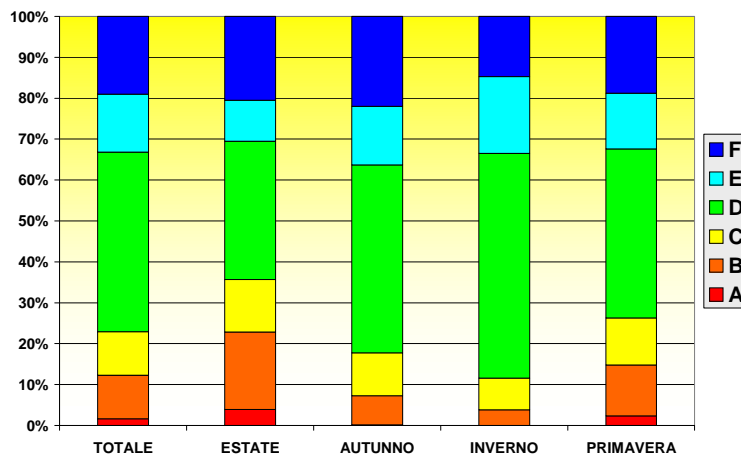
Localizzazione dei punti di ricostruzione dei campi di vento

**PUNTO 1
38.315N - 15.501E**

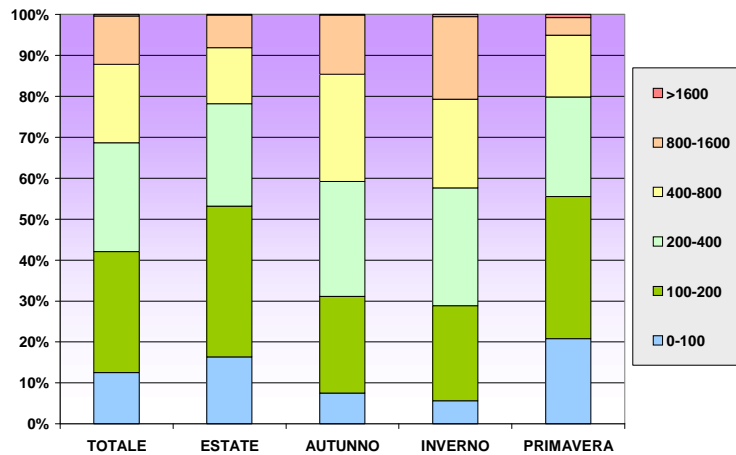
TEMPERATURA



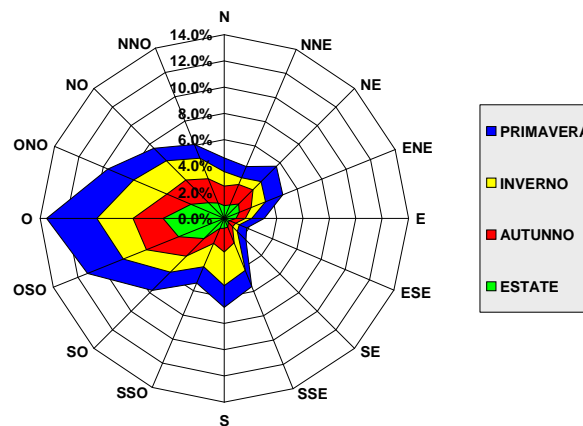
CLASSI DI STABILITÀ



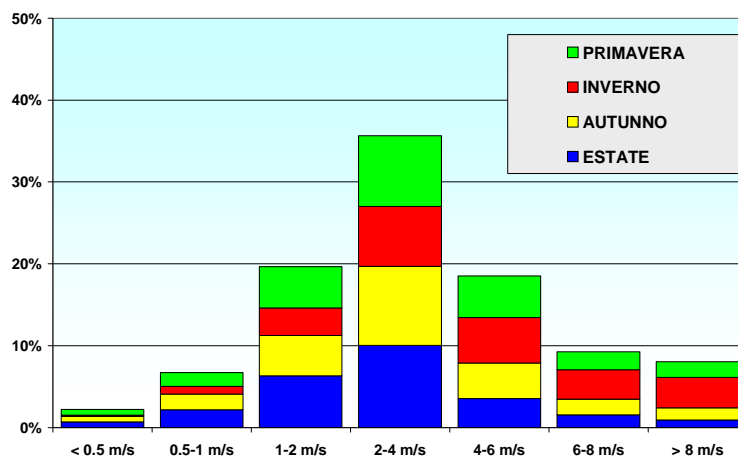
ALTEZZA DI RIMESCOLAMENTO



DIREZIONE DEL VENTO

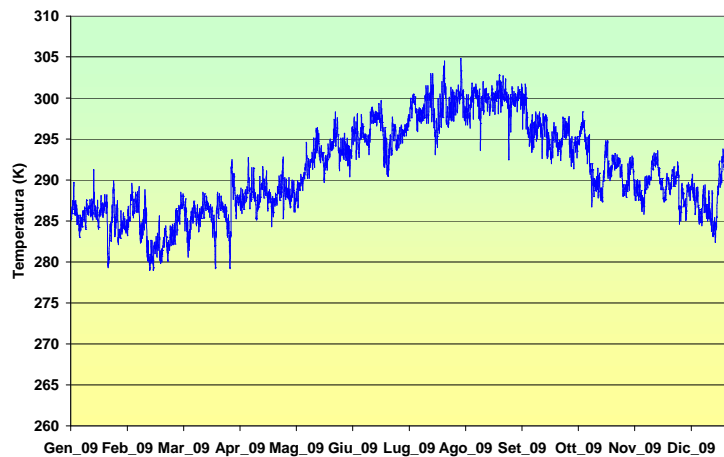


VELOCITÀ DEL VENTO

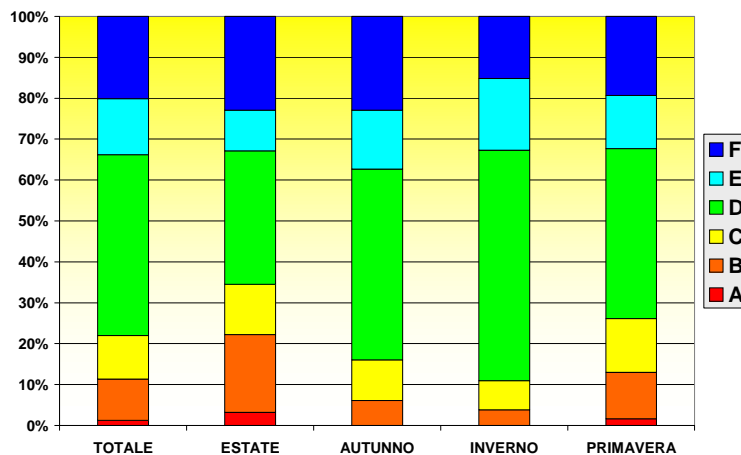


**PUNTO 2
38.310N - 15.576E**

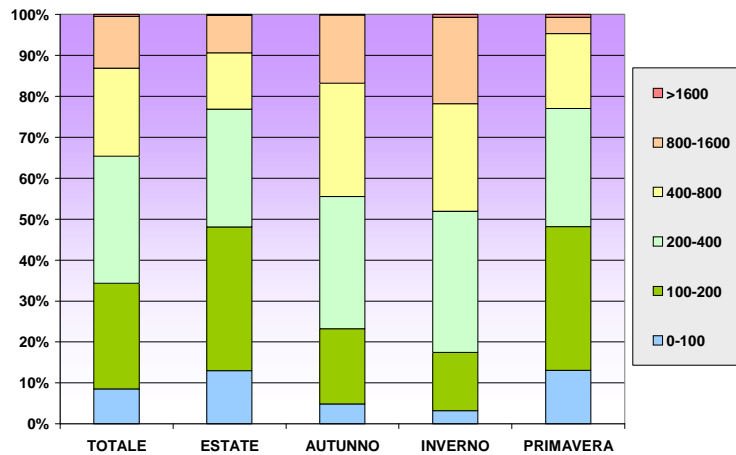
TEMPERATURA



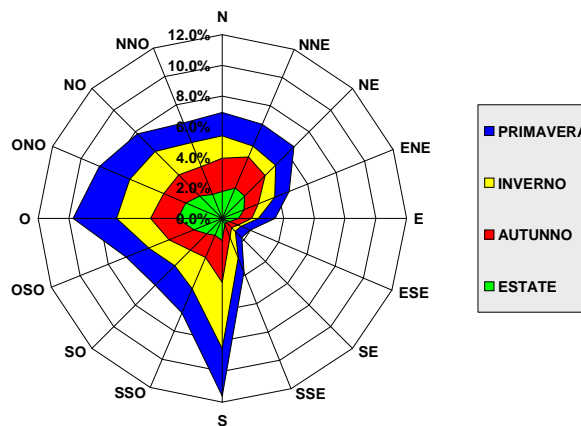
CLASSI DI STABILITÀ



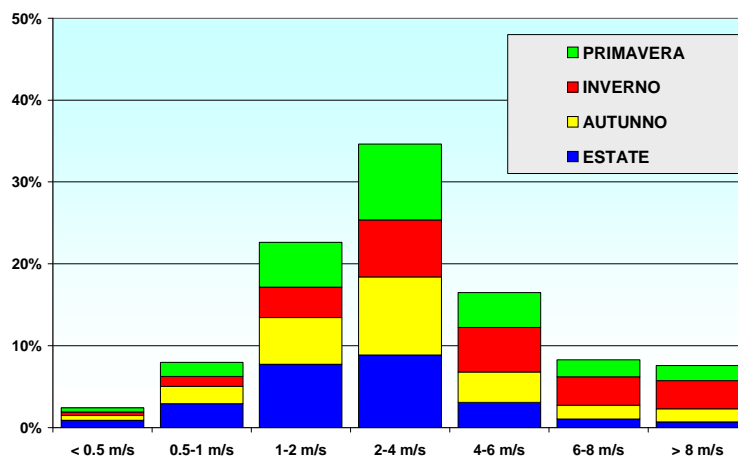
ALTEZZA DI RIMESCOLAMENTO



DIREZIONE DEL VENTO

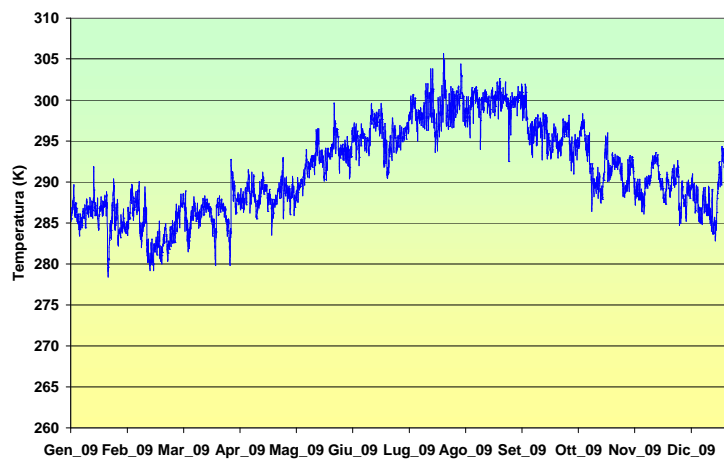


VELOCITÀ DEL VENTO

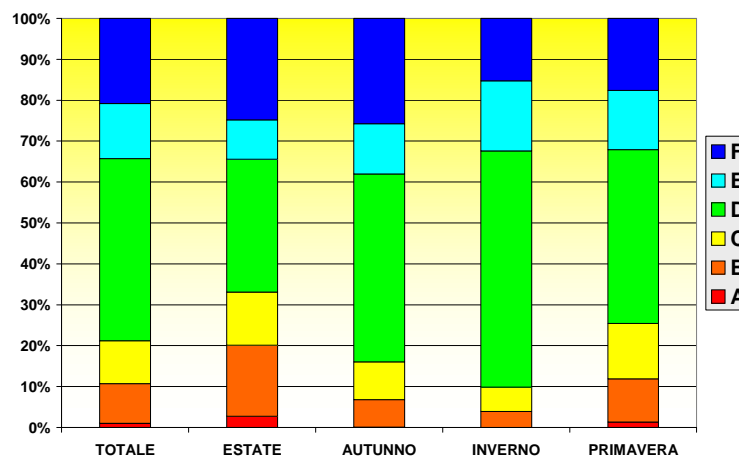


**PUNTO 3
38.305°N - 15.651°E**

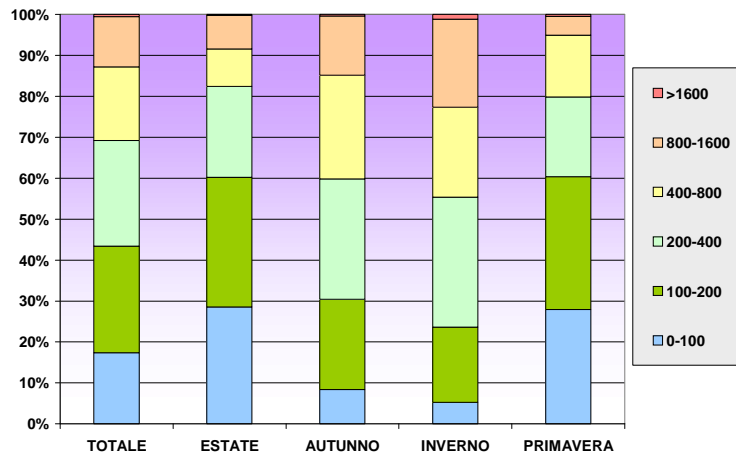
TEMPERATURA



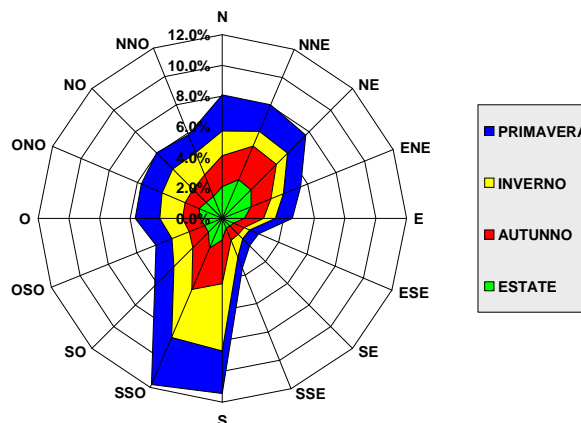
CLASSI DI STABILITÀ



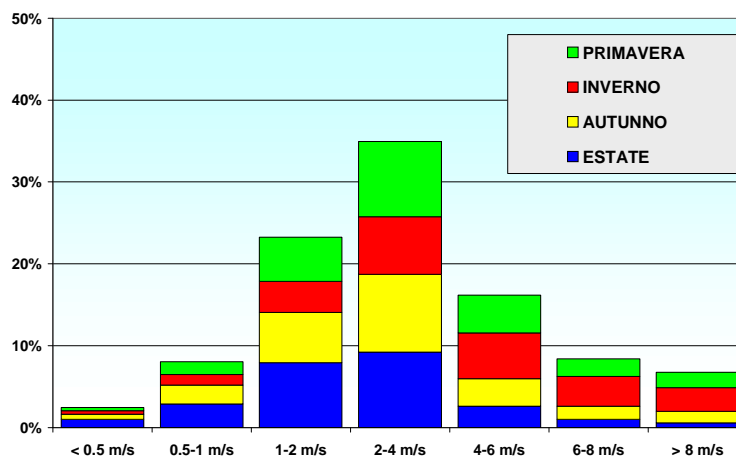
ALTEZZA DI RIMESCOLAMENTO



DIREZIONE DEL VENTO

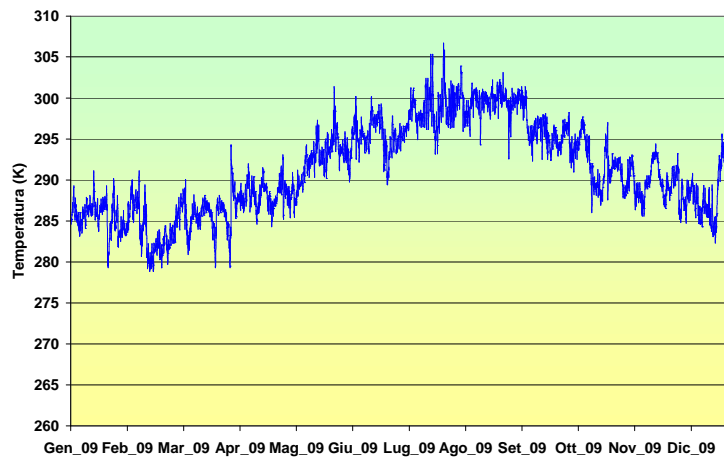


VELOCITÀ DEL VENTO

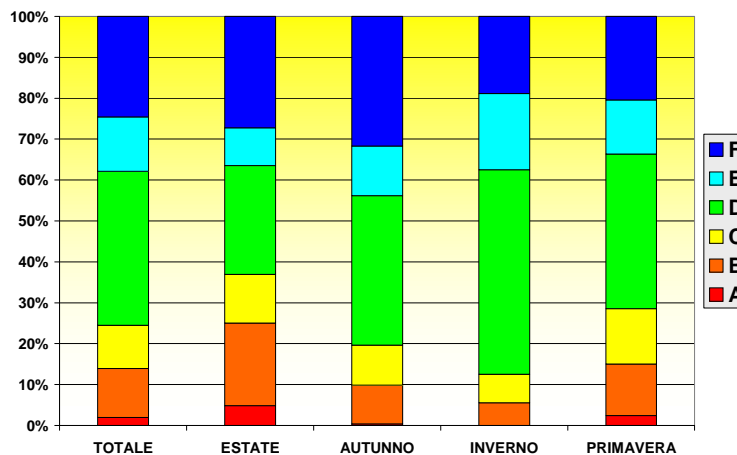


**PUNTO 4
38.300°N - 15.726°E**

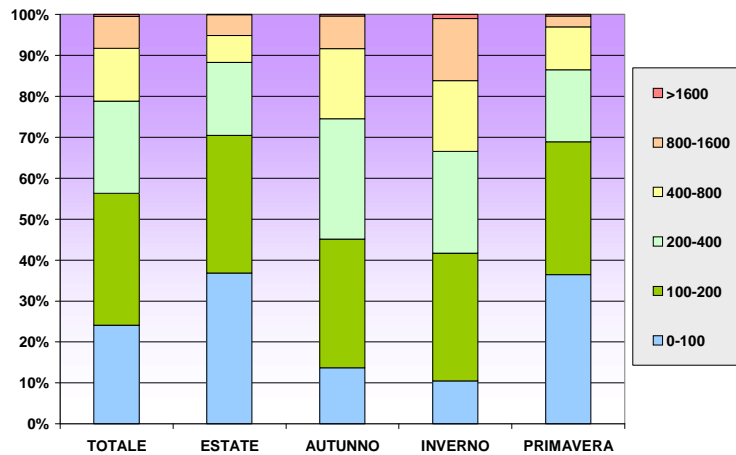
TEMPERATURA



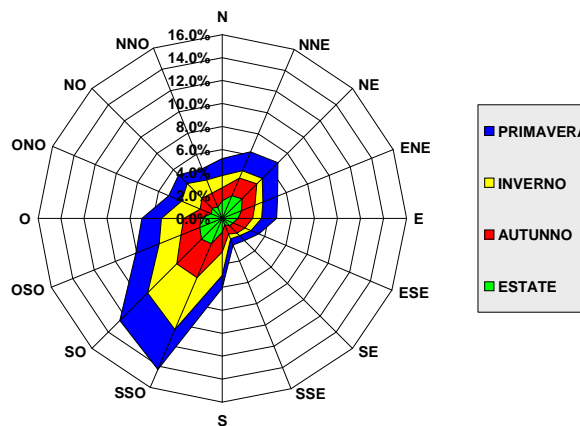
CLASSI DI STABILITÀ



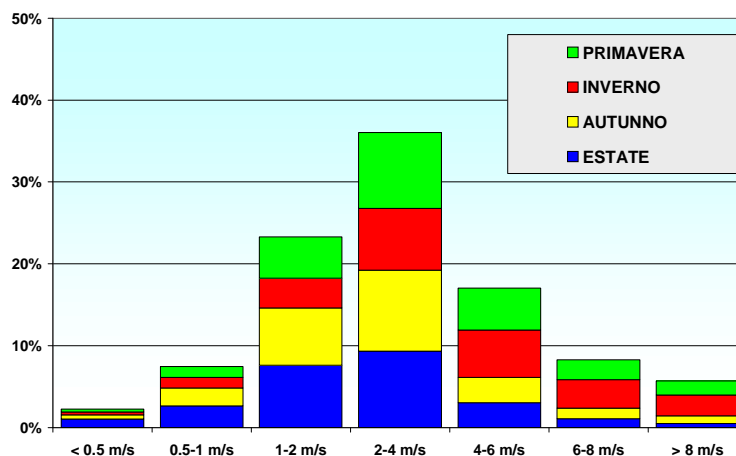
ALTEZZA DI RIMESCOLAMENTO



DIREZIONE DEL VENTO

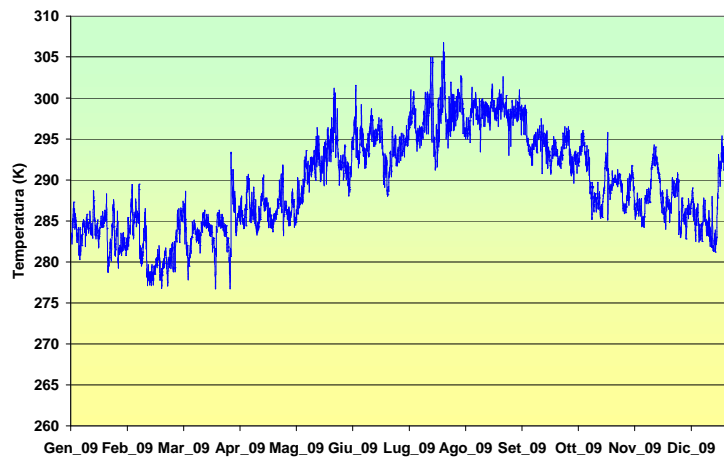


VELOCITÀ DEL VENTO

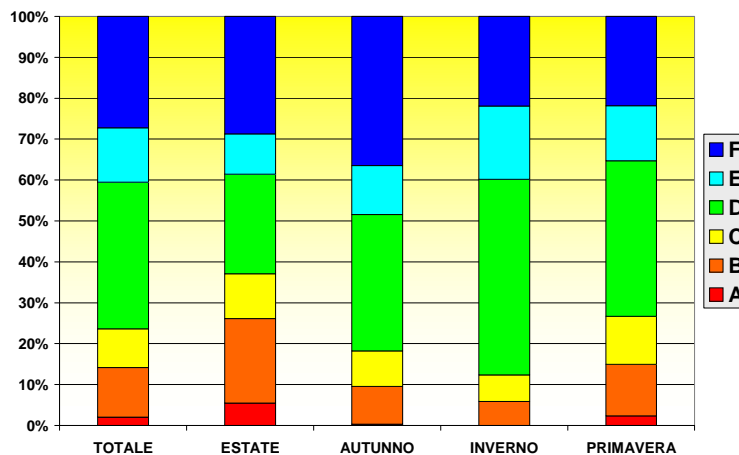


**PUNTO 5
38.294°N - 15.801°E**

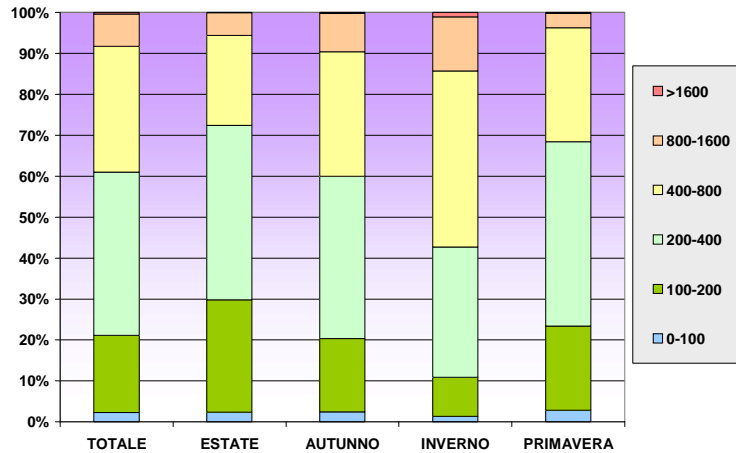
TEMPERATURA



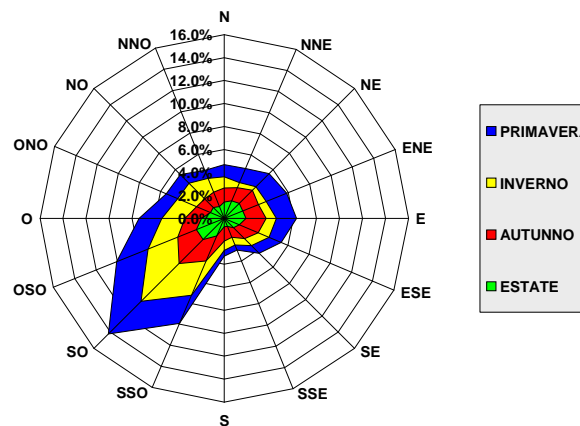
CLASSI DI STABILITÀ



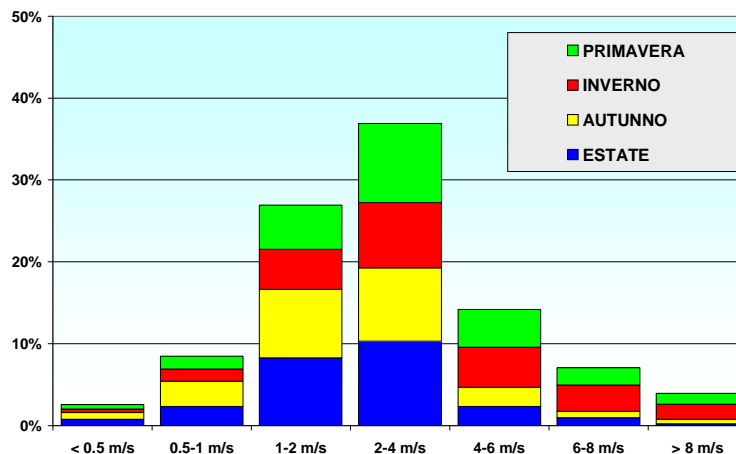
ALTEZZA DI RIMESCOLAMENTO



DIREZIONE DEL VENTO

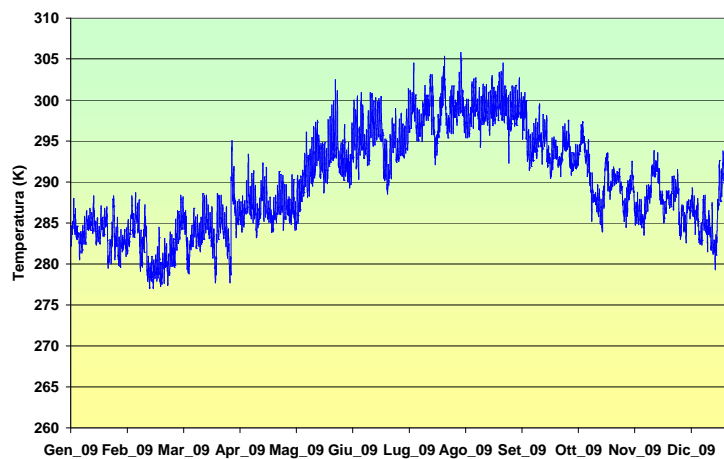


VELOCITÀ DEL VENTO

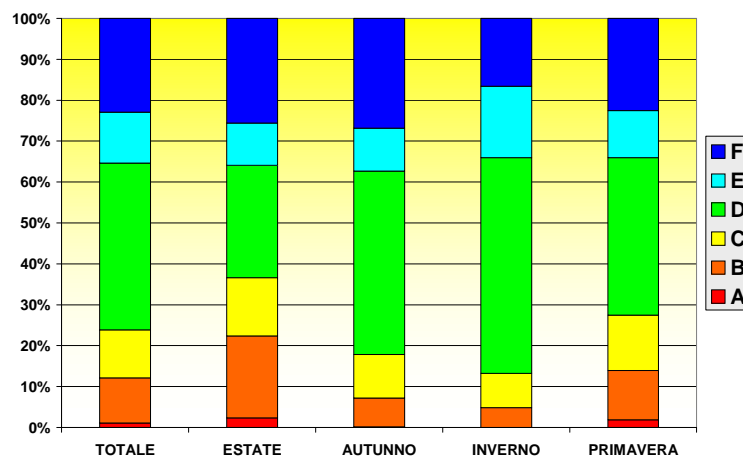


**PUNTO 6
38.253N - 15.495E**

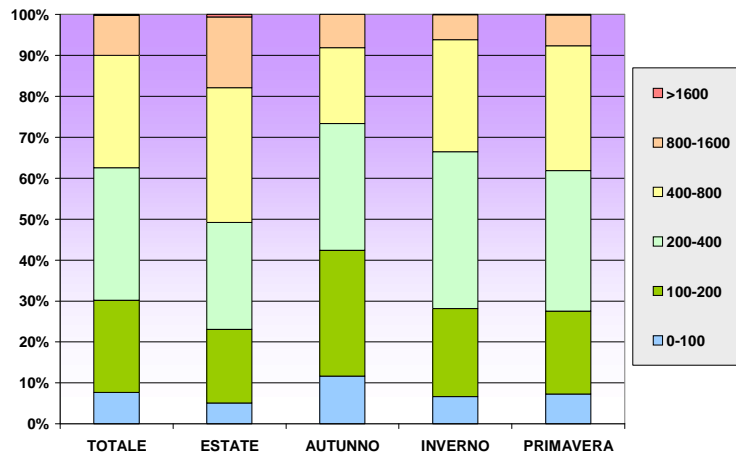
TEMPERATURA



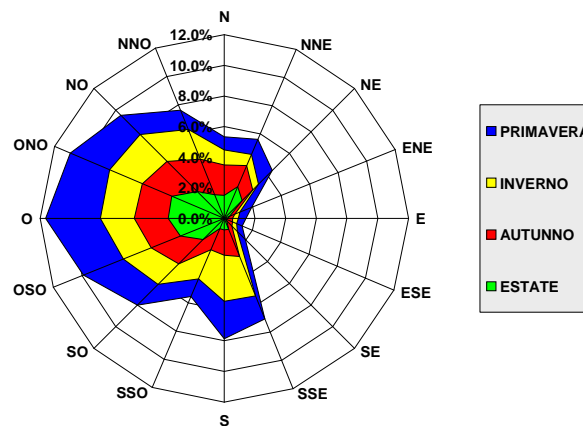
CLASSI DI STABILITÀ



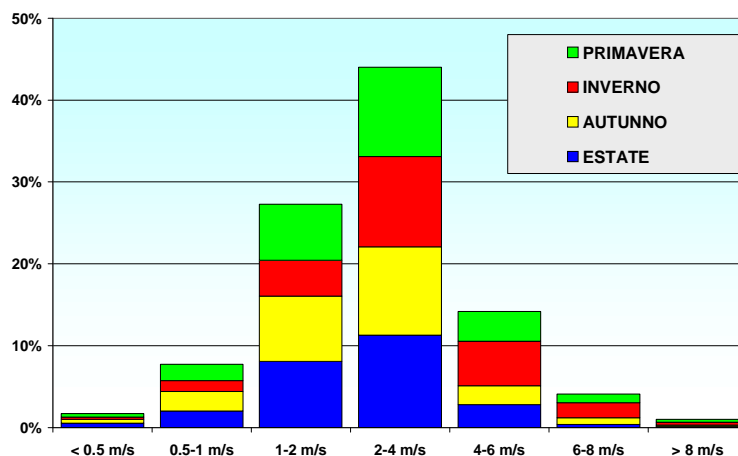
ALTEZZA DI RIMESCOLAMENTO



DIREZIONE DEL VENTO

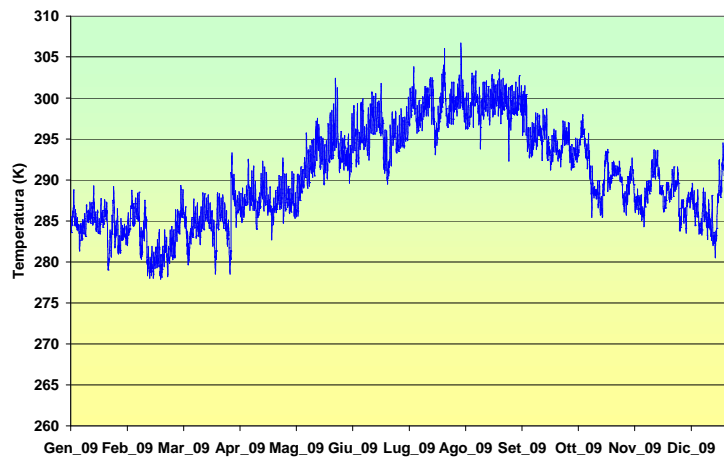


VELOCITÀ DEL VENTO

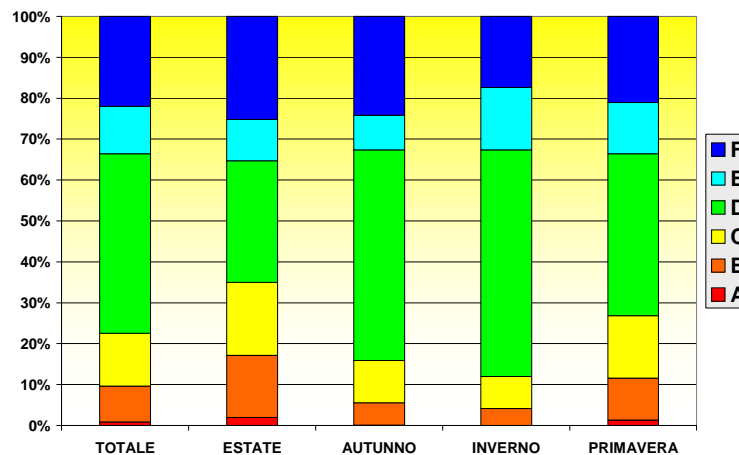


**PUNTO 7
38.248N - 15.570E**

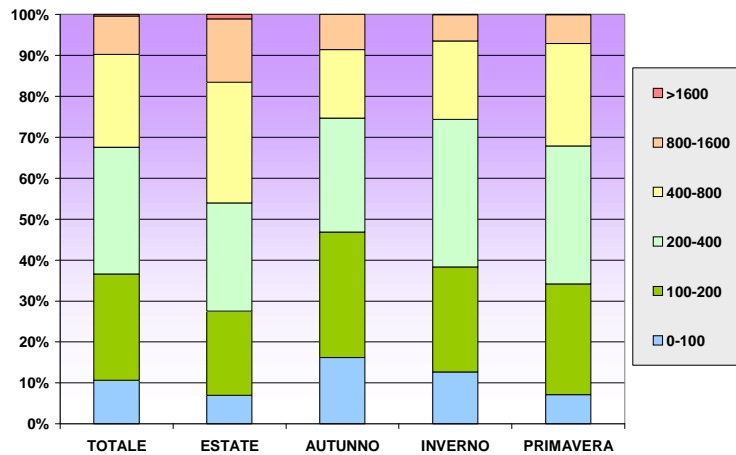
TEMPERATURA



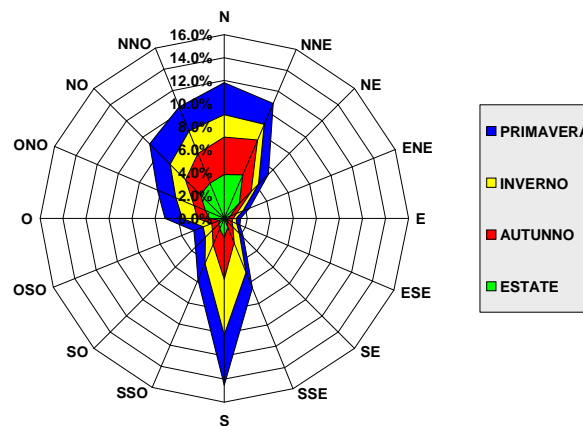
CLASSI DI STABILITÀ



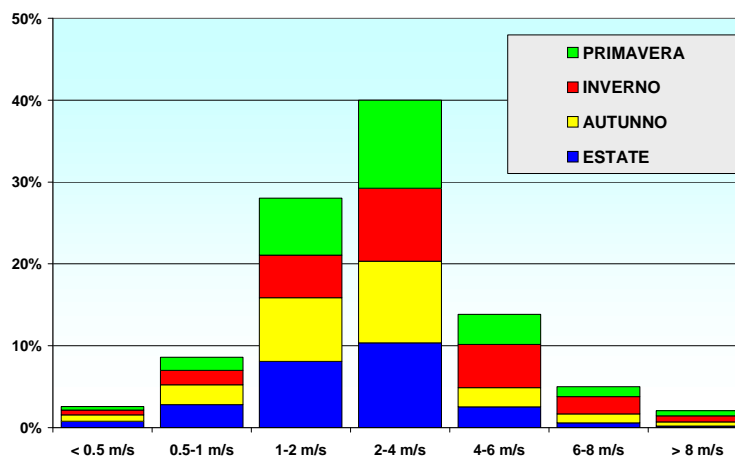
ALTEZZA DI RIMESCOLAMENTO



DIREZIONE DEL VENTO

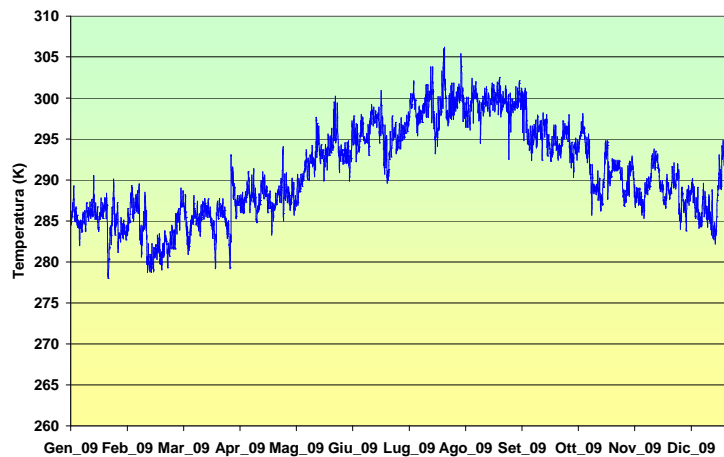


VELOCITÀ DEL VENTO

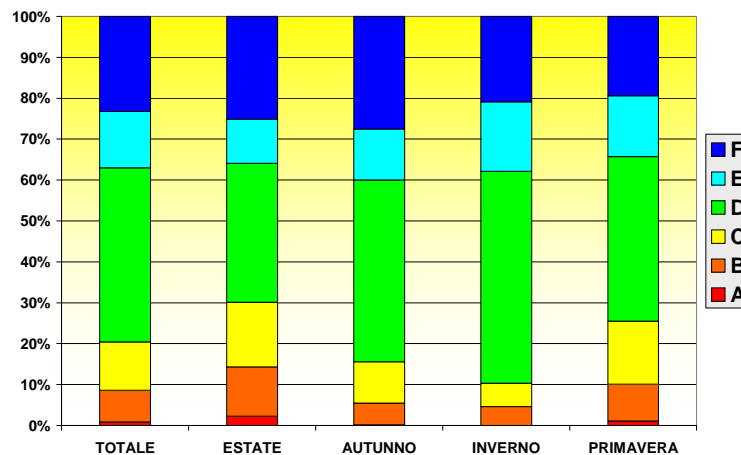


**PUNTO 8
38.243N - 15.644E**

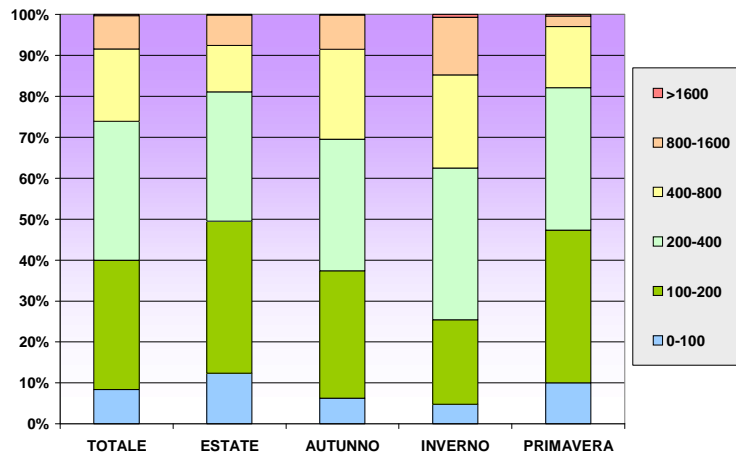
TEMPERATURA



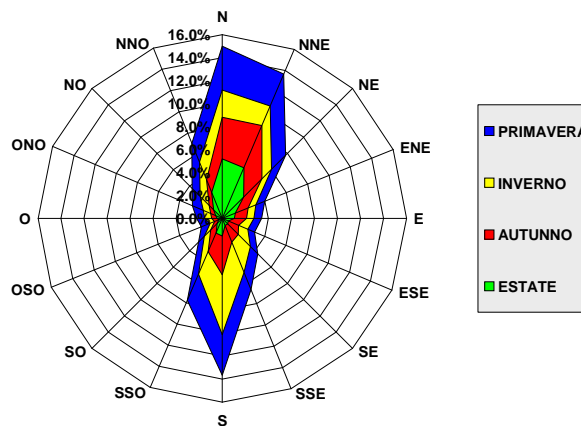
CLASSI DI STABILITÀ



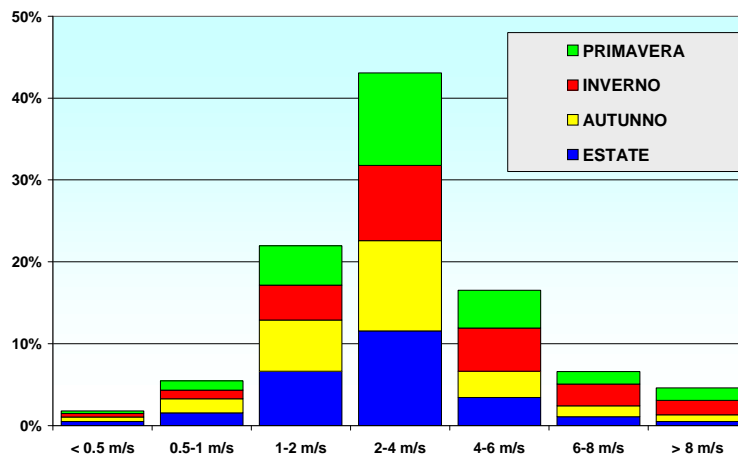
ALTEZZA DI RIMESCOLAMENTO



DIREZIONE DEL VENTO

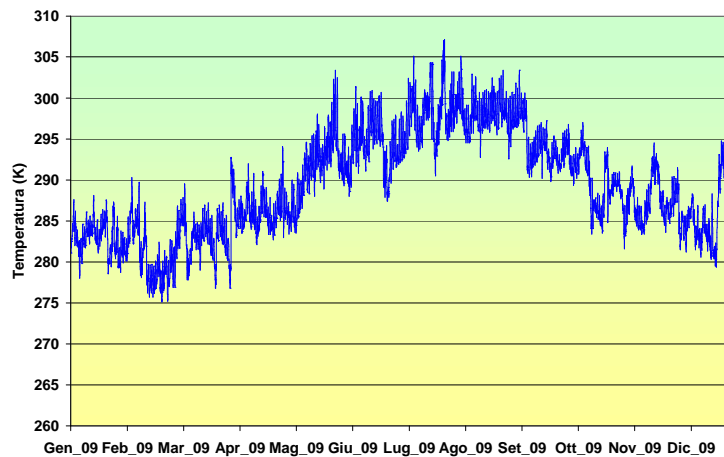


VELOCITÀ DEL VENTO

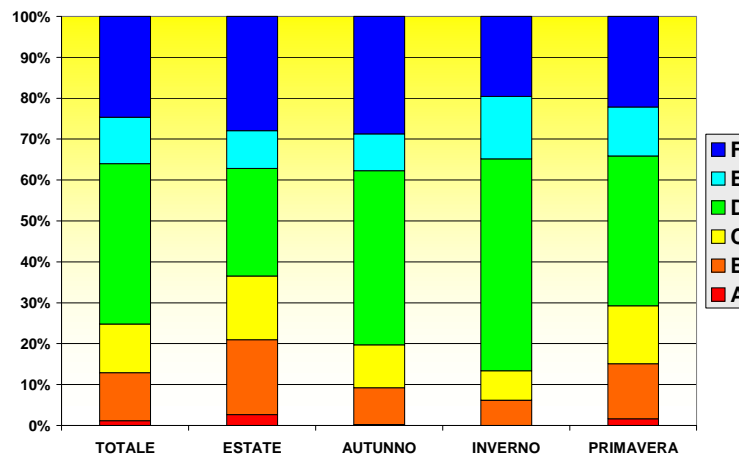


**PUNTO 9
38.237N - 15.719E**

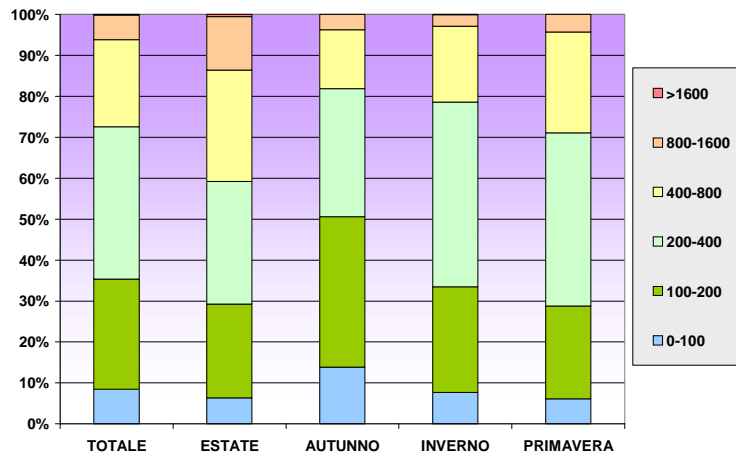
TEMPERATURA



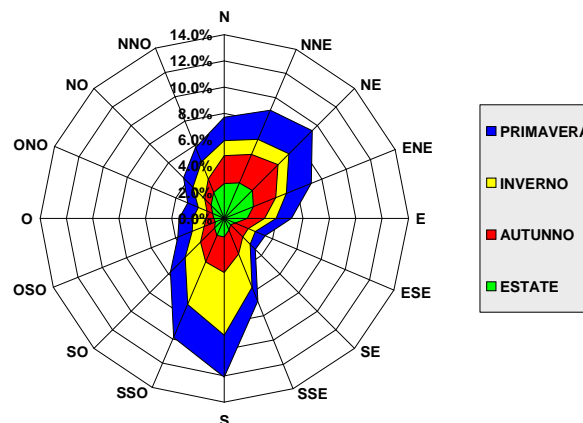
CLASSI DI STABILITÀ



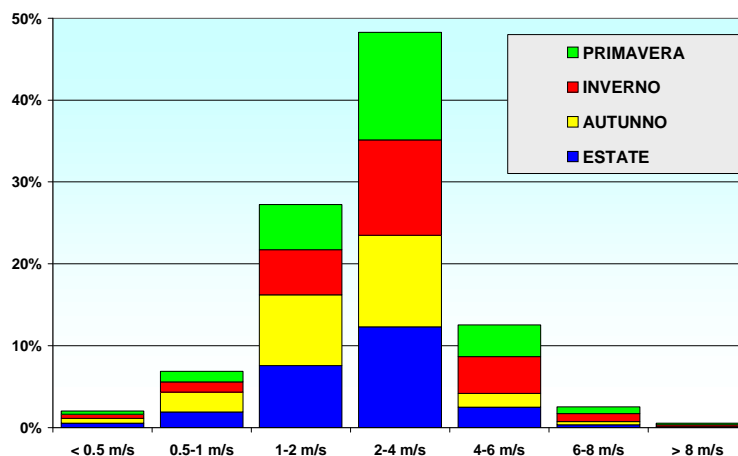
ALTEZZA DI RIMESCOLAMENTO



DIREZIONE DEL VENTO

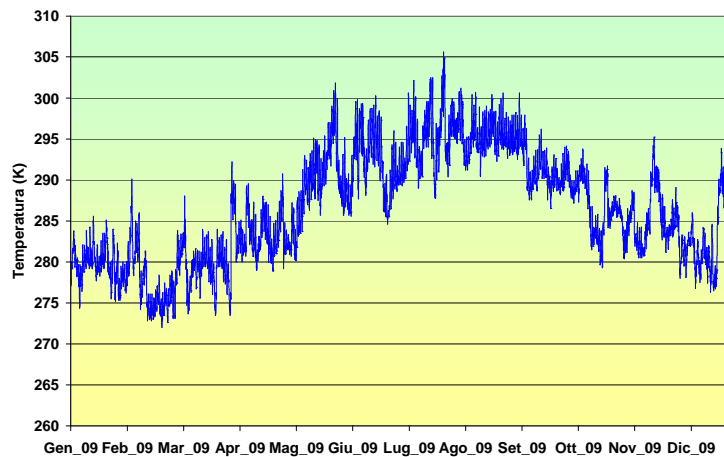


VELOCITÀ DEL VENTO

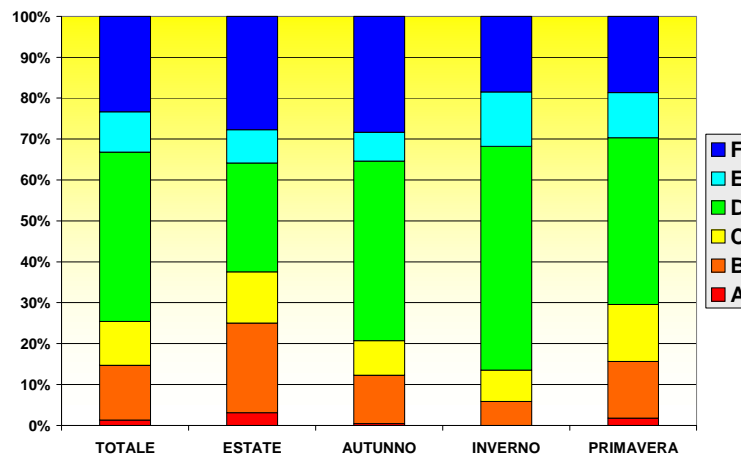


**PUNTO 10
38.232N - 15.794E**

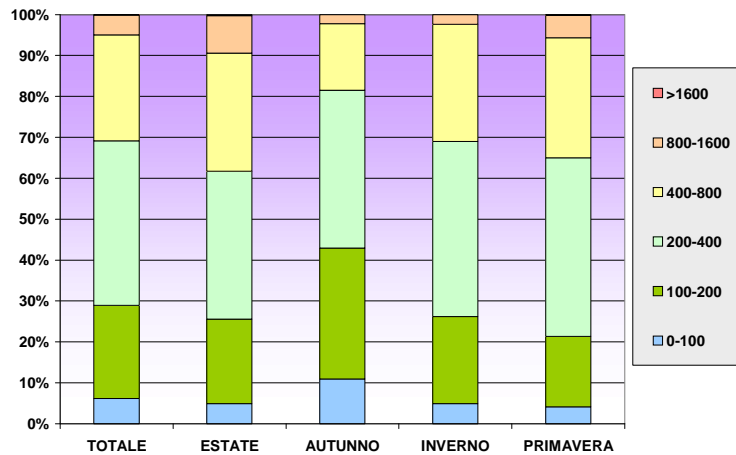
TEMPERATURA



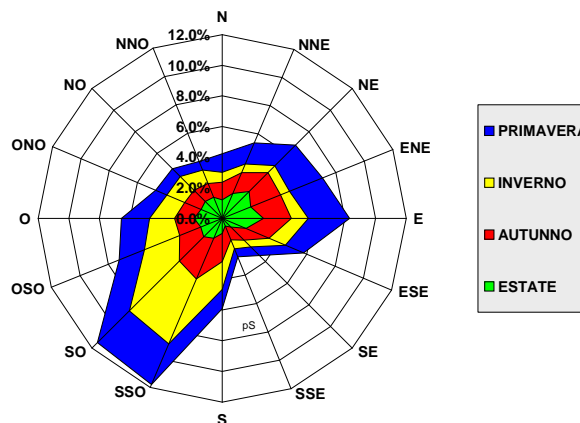
CLASSI DI STABILITÀ



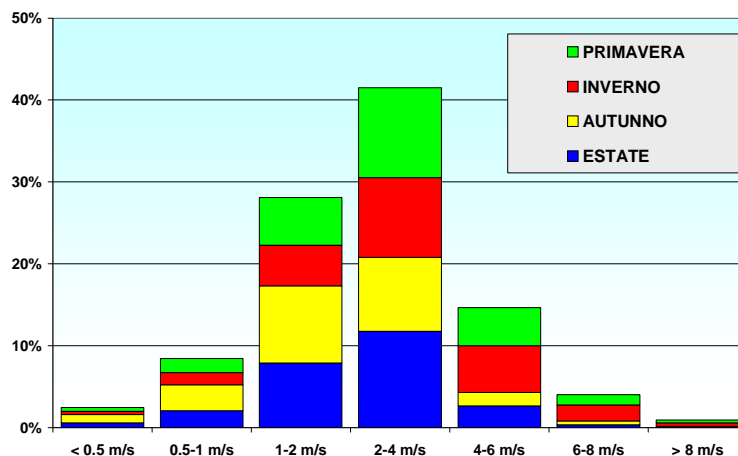
ALTEZZA DI RIMESCOLAMENTO



DIREZIONE DEL VENTO

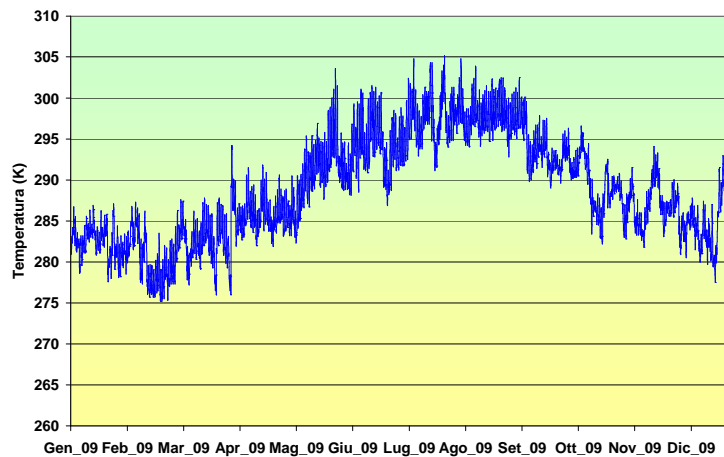


VELOCITÀ DEL VENTO

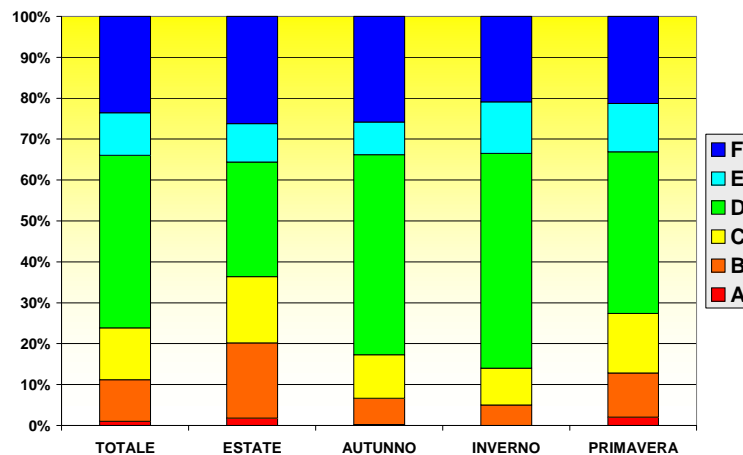


**PUNTO 11
38.191°N - 15.488°E**

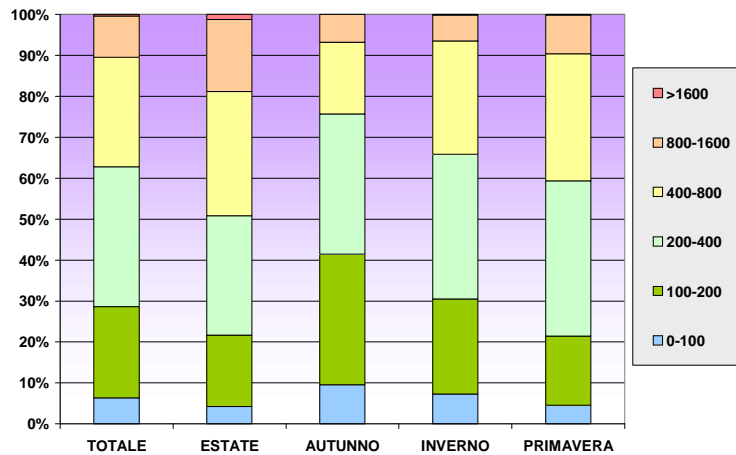
TEMPERATURA



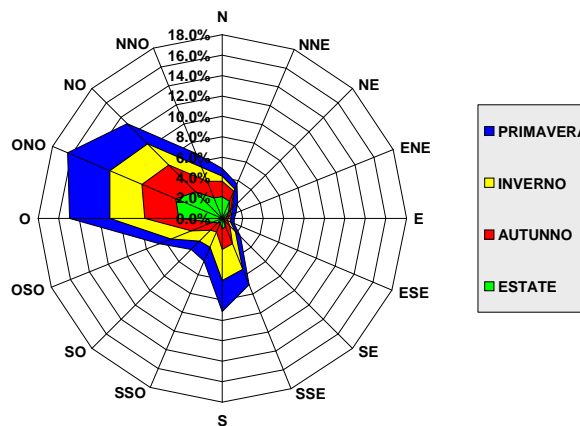
CLASSI DI STABILITÀ



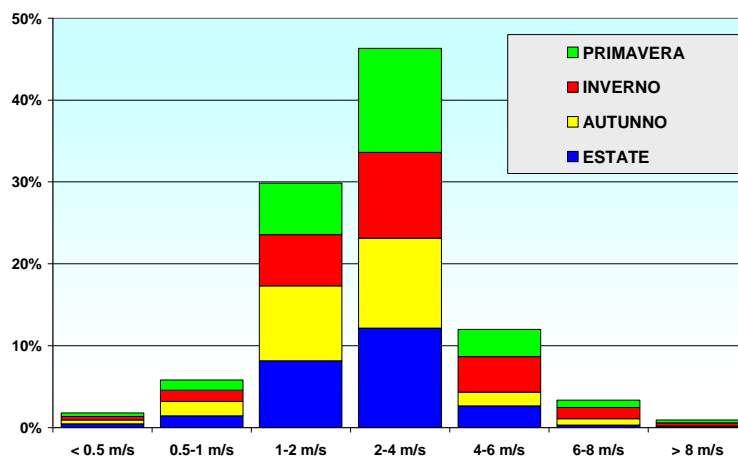
ALTEZZA DI RIMESCOLAMENTO



DIREZIONE DEL VENTO

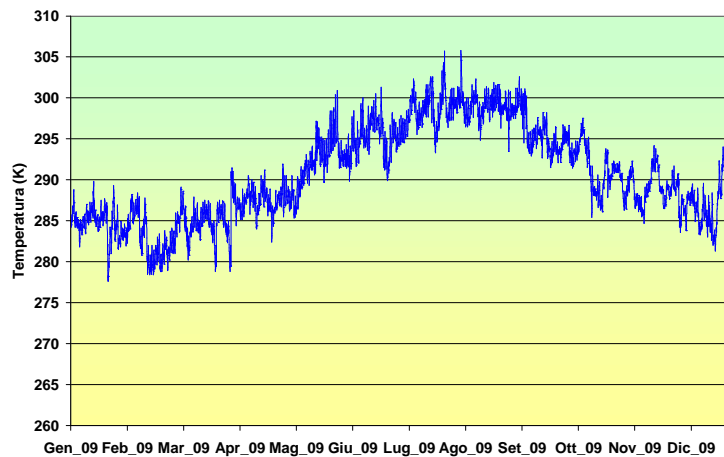


VELOCITÀ DEL VENTO

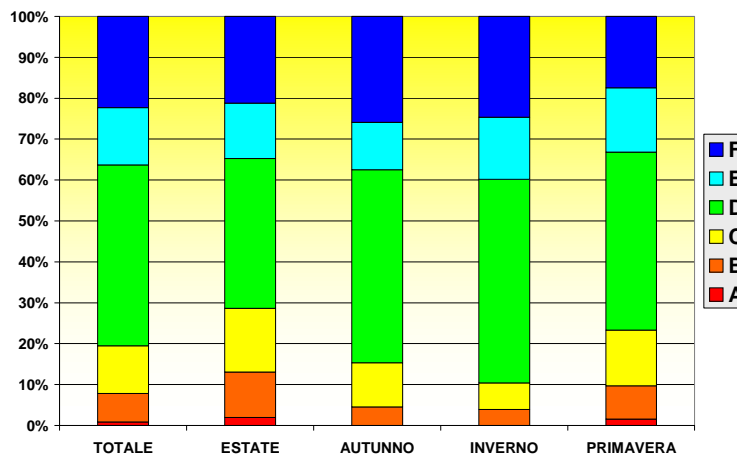


**PUNTO 12
38.186°N - 15.563°E**

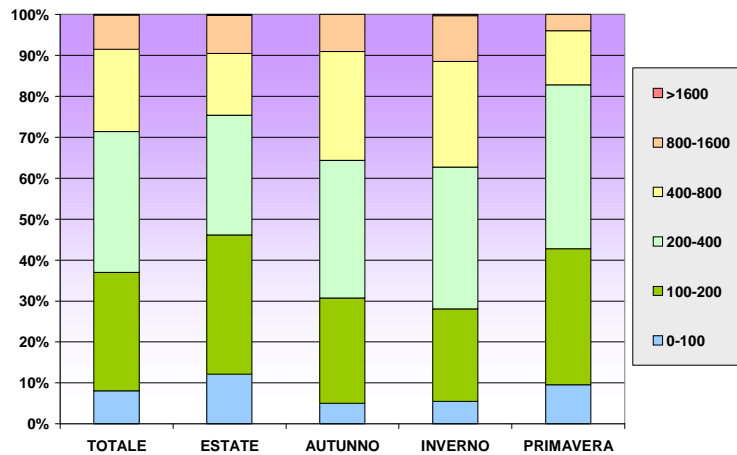
TEMPERATURA



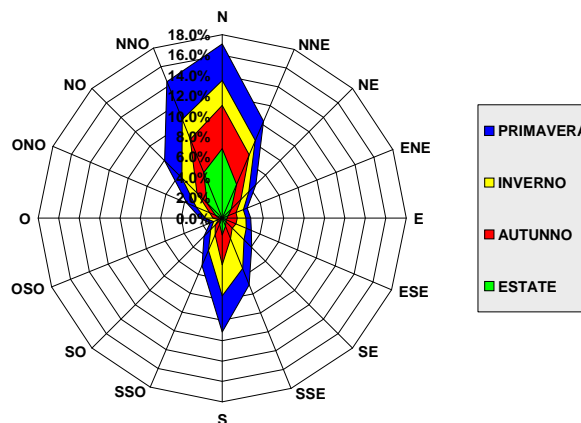
CLASSI DI STABILITÀ



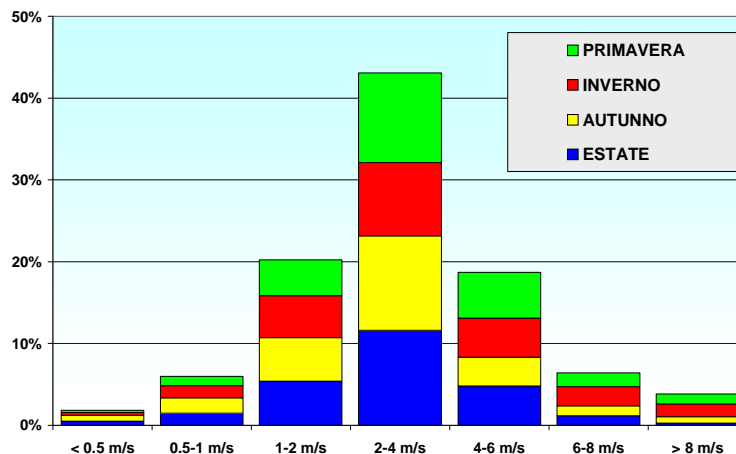
ALTEZZA DI RIMESCOLAMENTO



DIREZIONE DEL VENTO

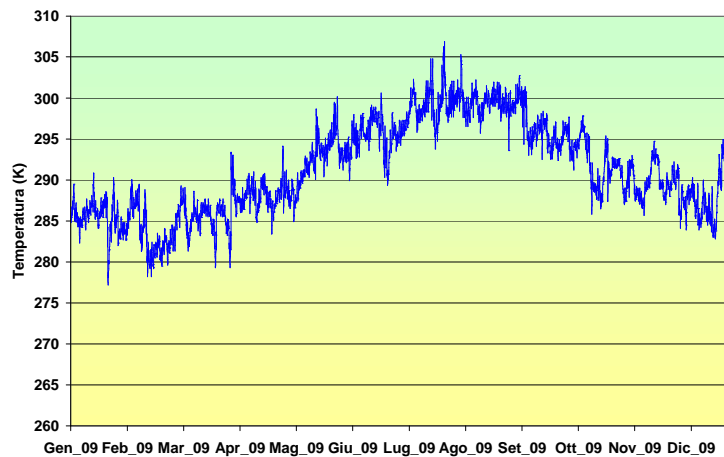


VELOCITÀ DEL VENTO

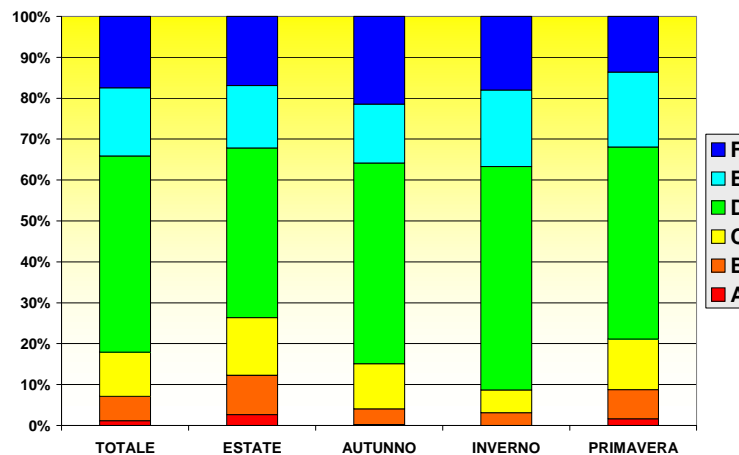


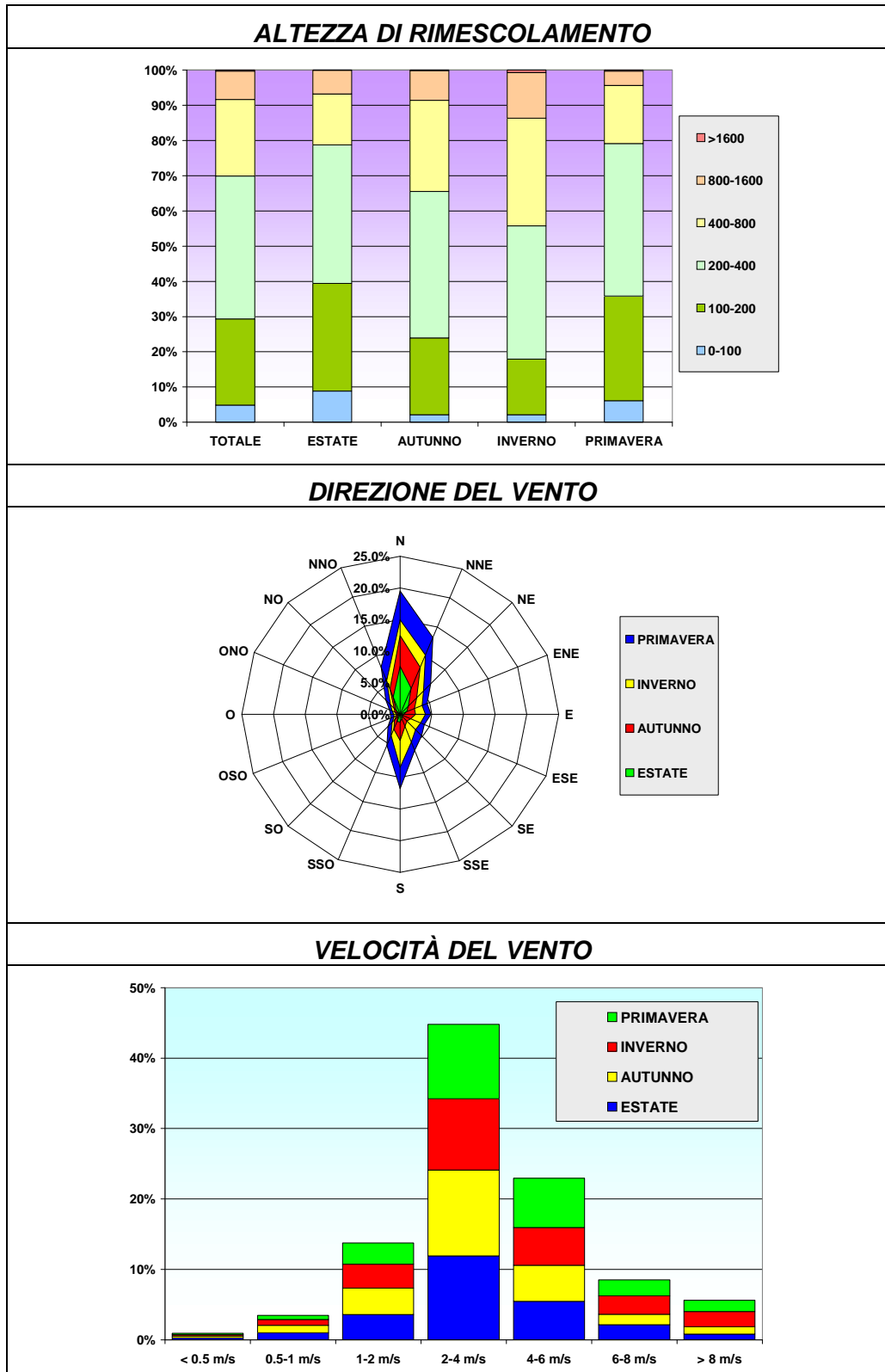
**PUNTO 13
38.180°N - 15.637°E**

TEMPERATURA



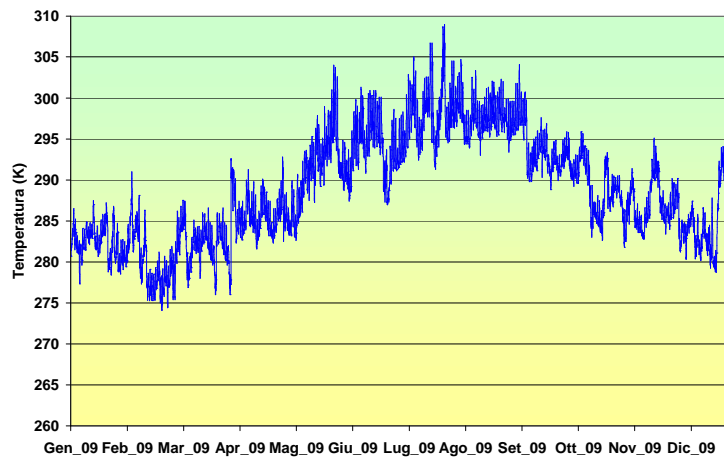
CLASSI DI STABILITÀ



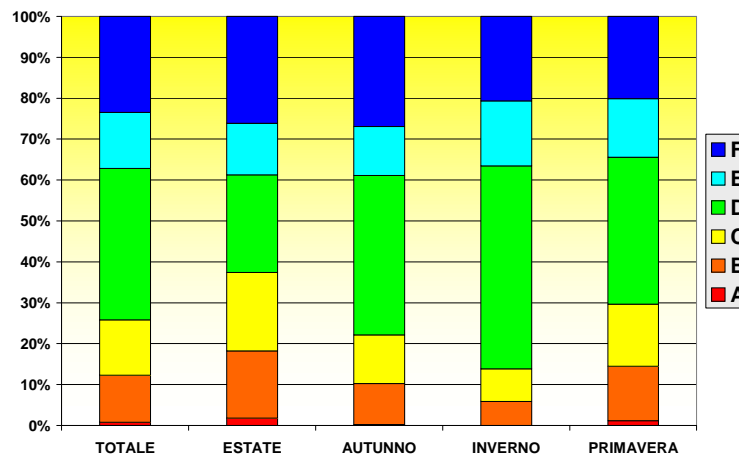


**PUNTO 14
38.175N - 15.712E**

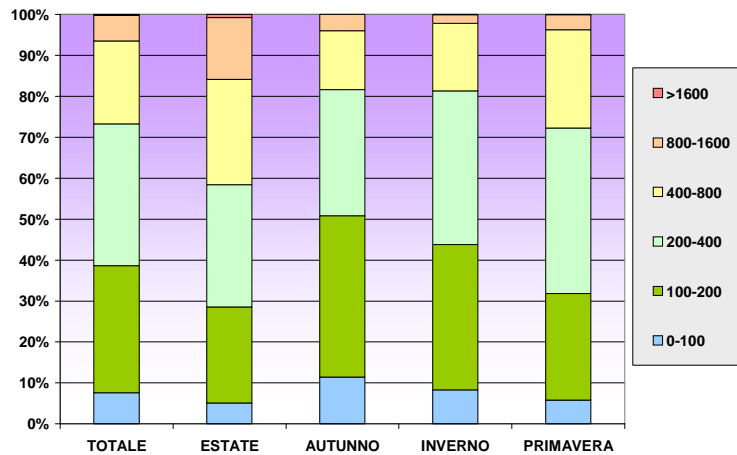
TEMPERATURA



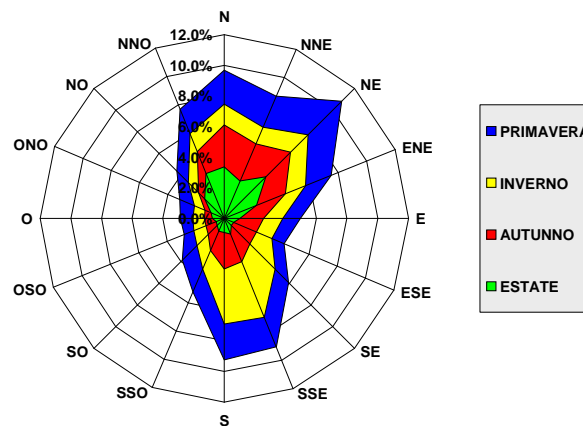
CLASSI DI STABILITÀ



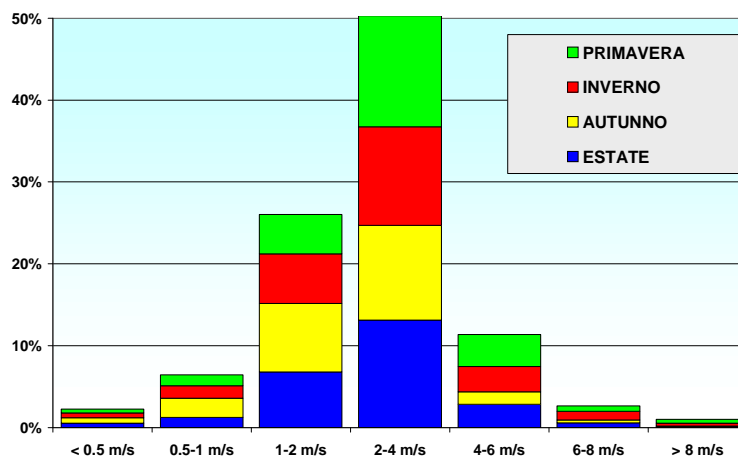
ALTEZZA DI RIMESCOLAMENTO



DIREZIONE DEL VENTO

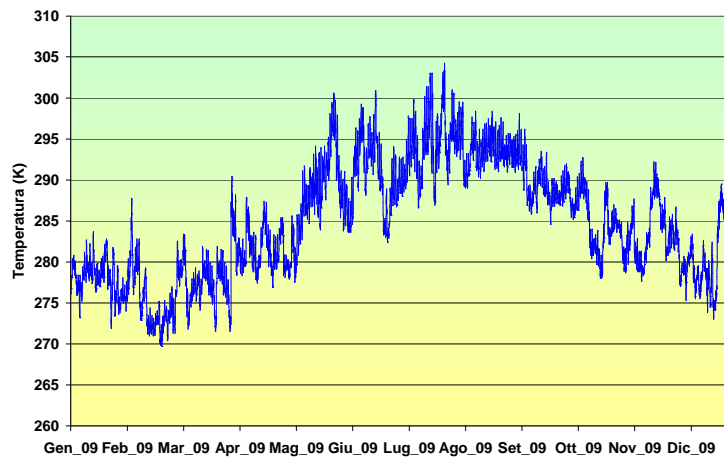


VELOCITÀ DEL VENTO

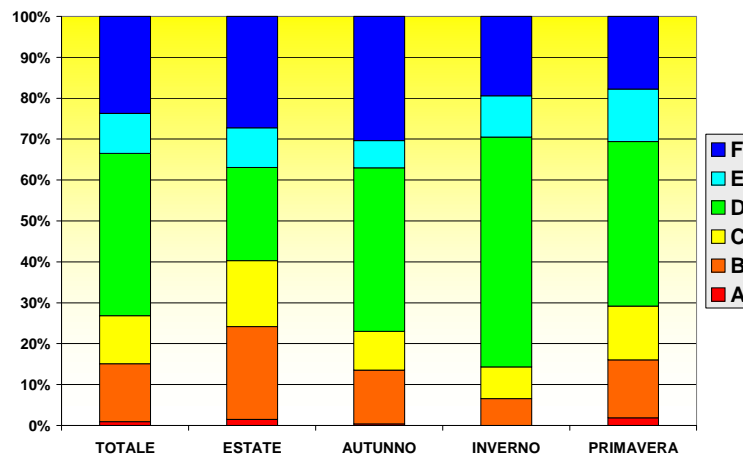


**PUNTO 15
38.170°N - 15.787°E**

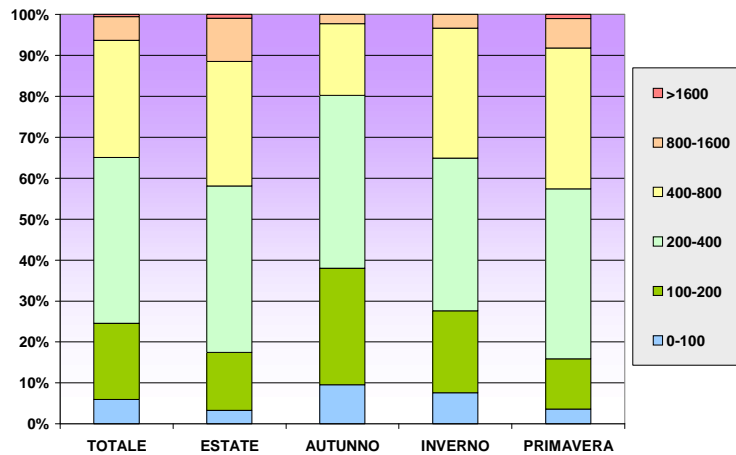
TEMPERATURA



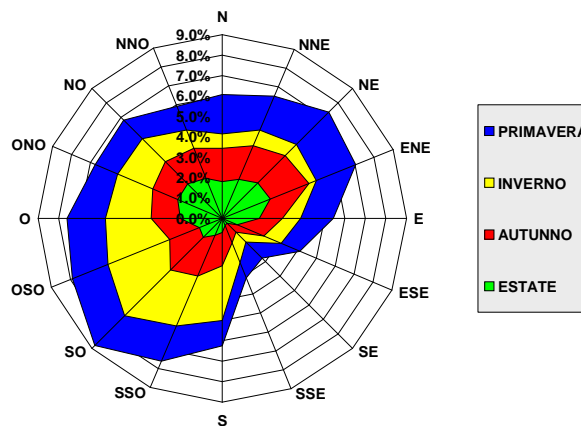
CLASSI DI STABILITÀ



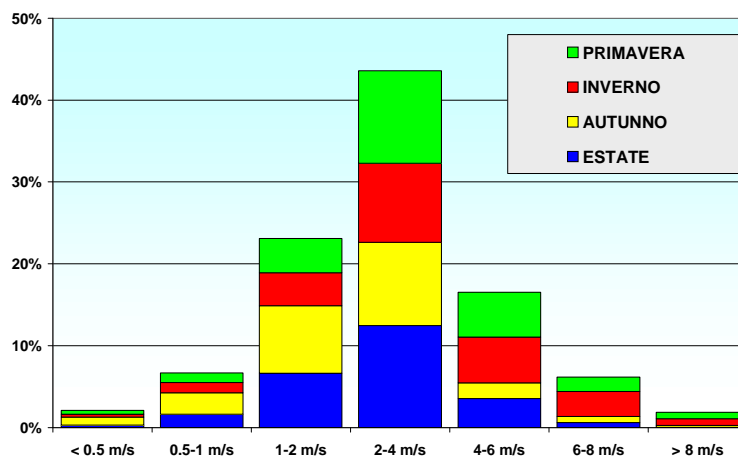
ALTEZZA DI RIMESCOLAMENTO



DIREZIONE DEL VENTO

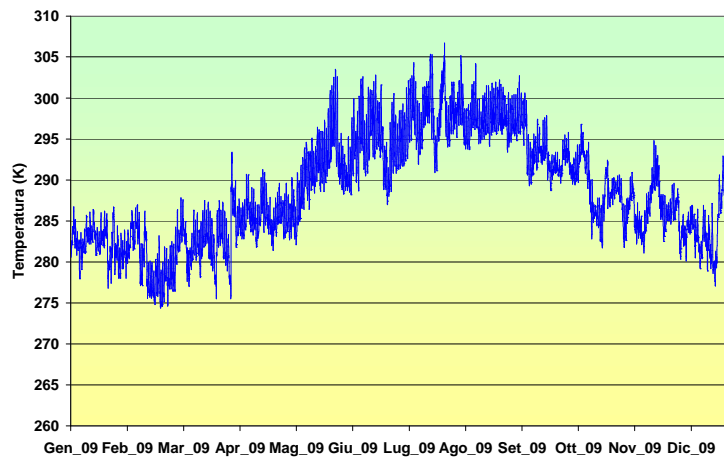


VELOCITÀ DEL VENTO

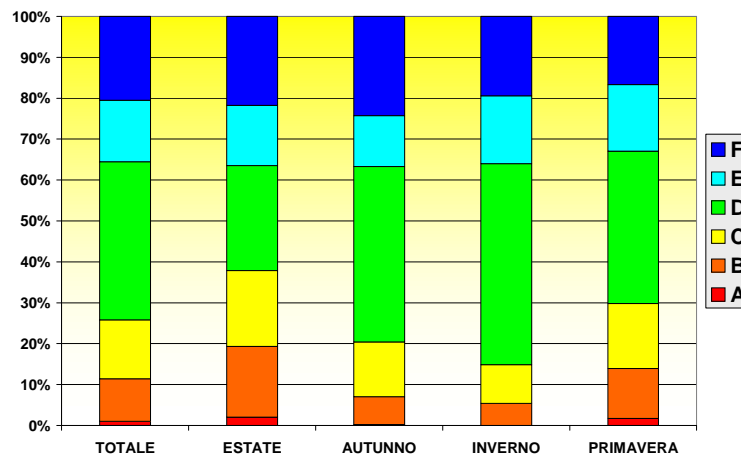


**PUNTO 16
38.128°N - 15.481°E**

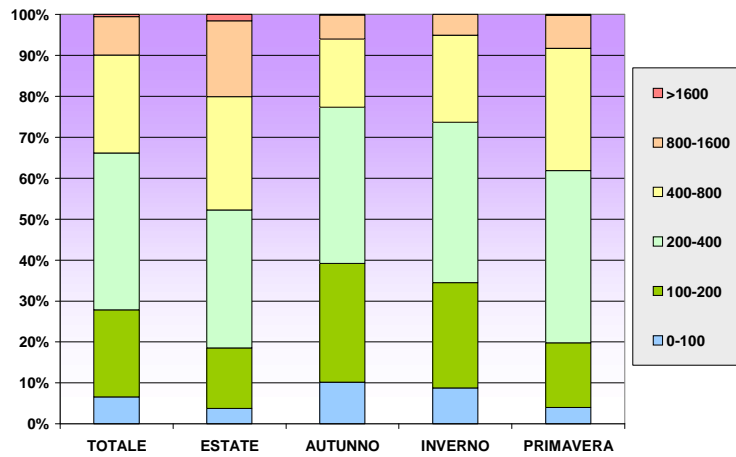
TEMPERATURA



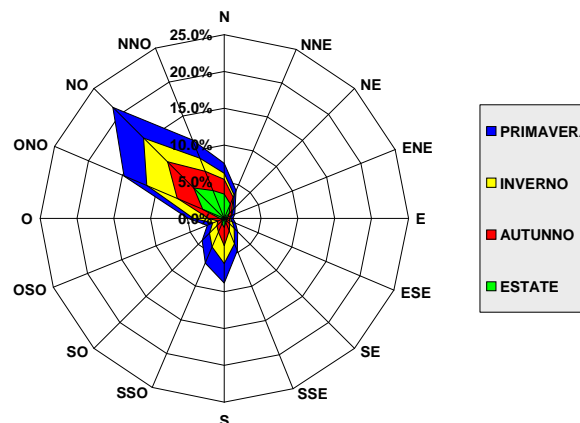
CLASSI DI STABILITÀ



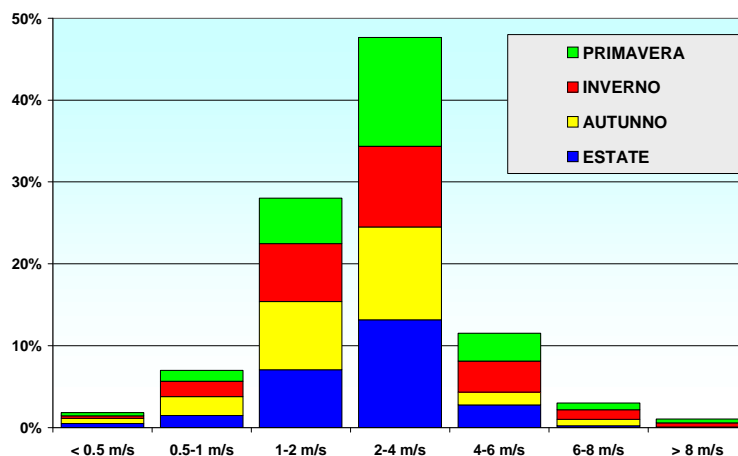
ALTEZZA DI RIMESCOLAMENTO



DIREZIONE DEL VENTO

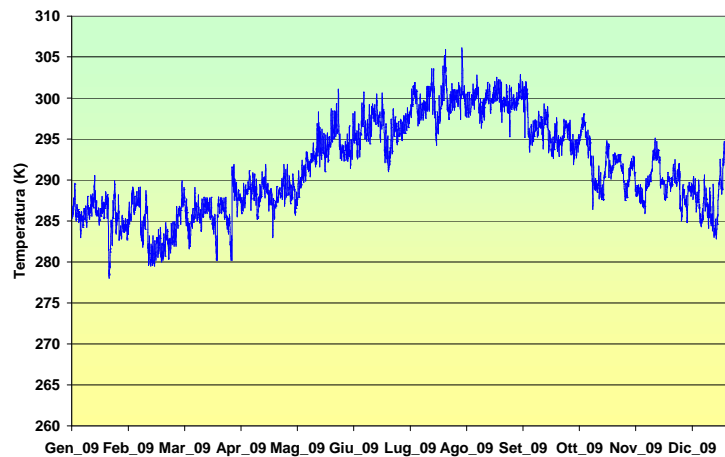


VELOCITÀ DEL VENTO

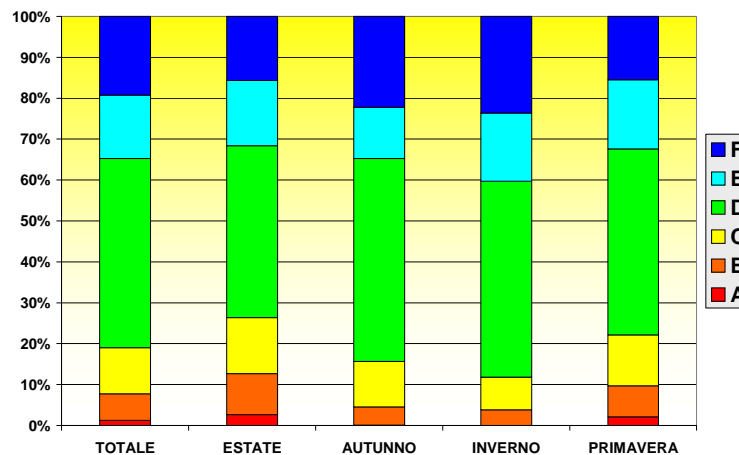


**PUNTO 17
38.123N - 15.556E**

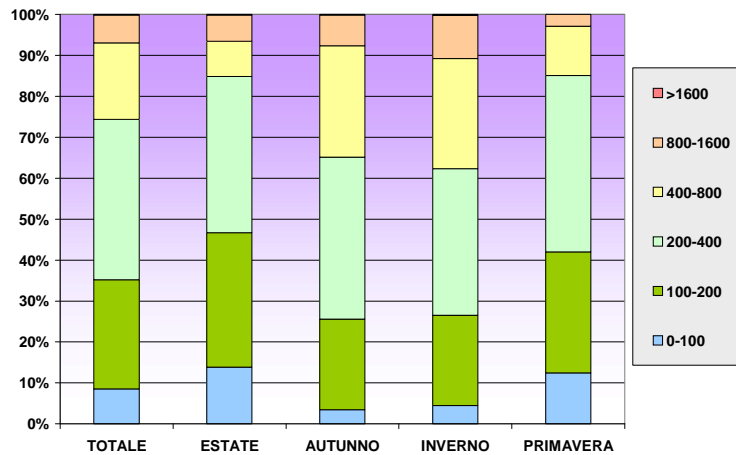
TEMPERATURA



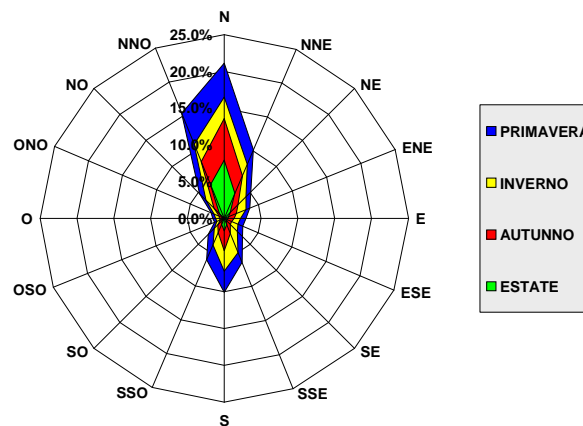
CLASSI DI STABILITÀ



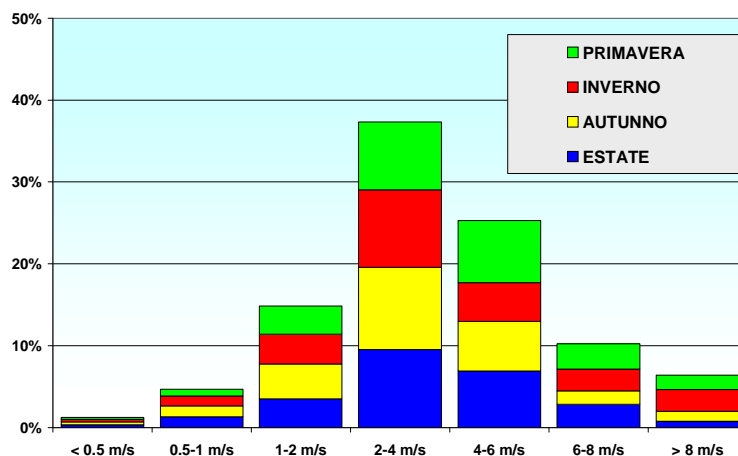
ALTEZZA DI RIMESCOLAMENTO



DIREZIONE DEL VENTO

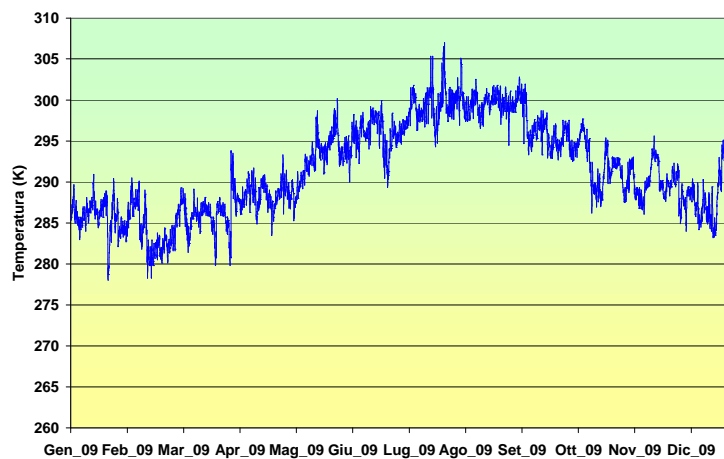


VELOCITÀ DEL VENTO

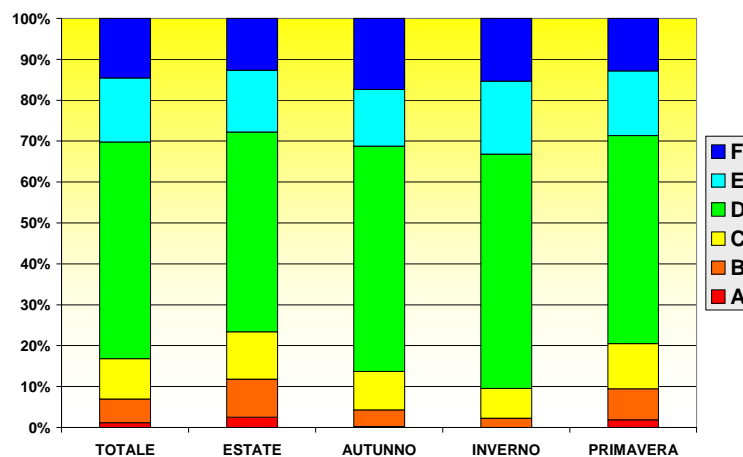


**PUNTO 18
38.118N - 15.631E**

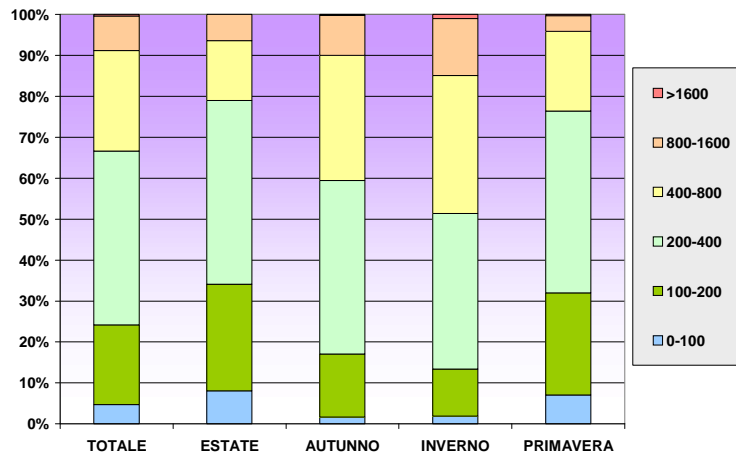
TEMPERATURA



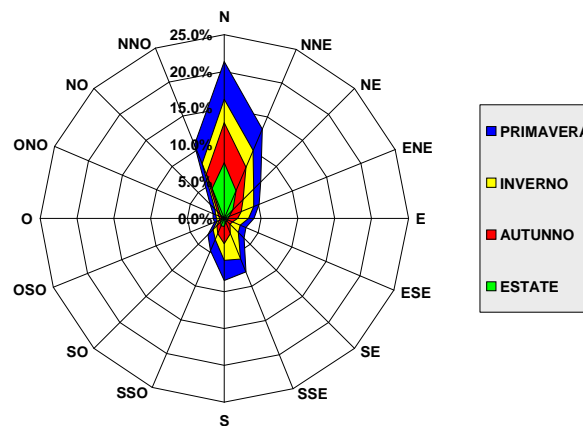
CLASSI DI STABILITÀ



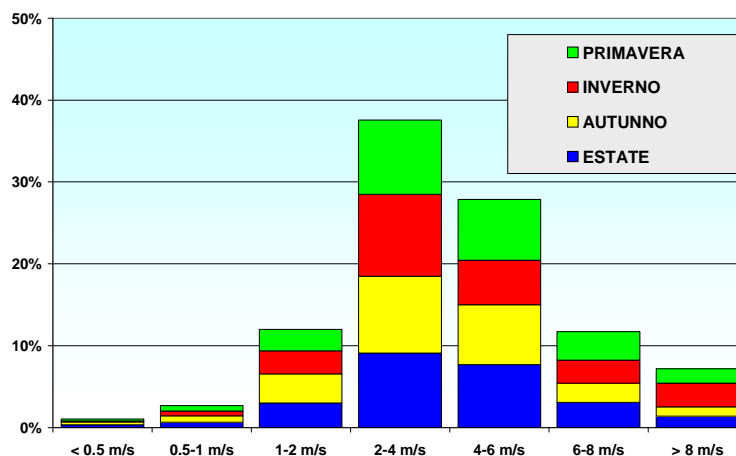
ALTEZZA DI RIMESCOLAMENTO



DIREZIONE DEL VENTO

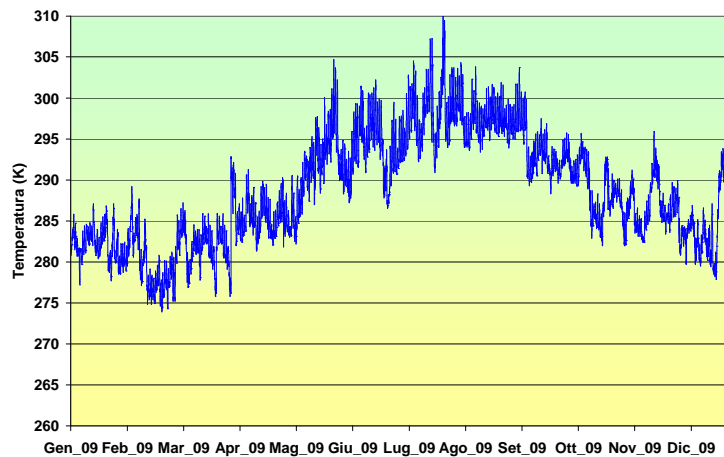


VELOCITÀ DEL VENTO

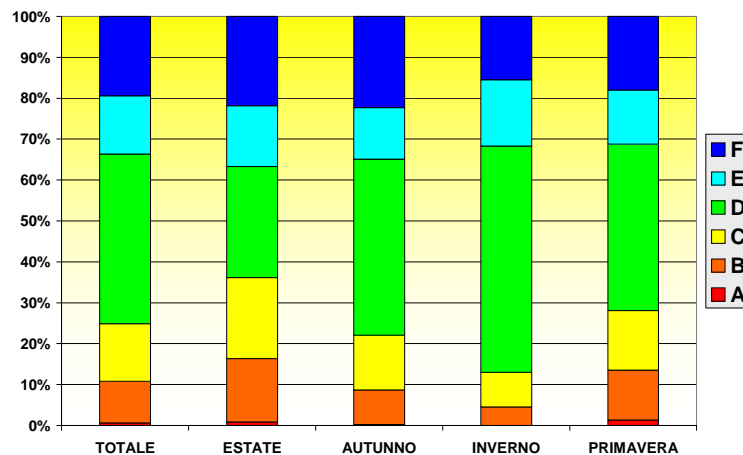


**PUNTO 19
38.113N - 15.705E**

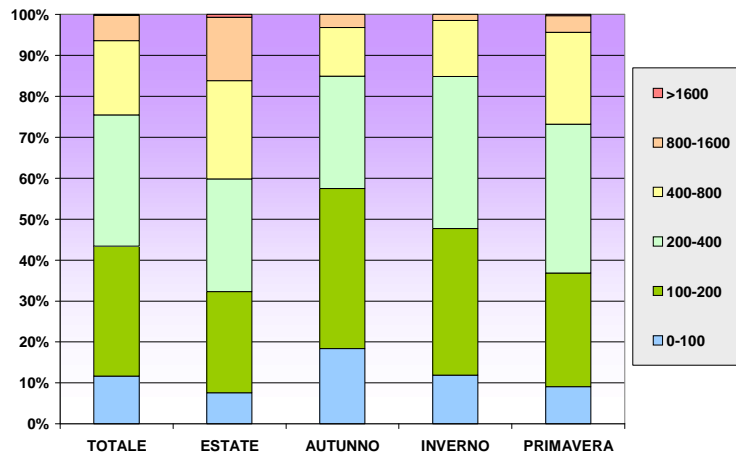
TEMPERATURA



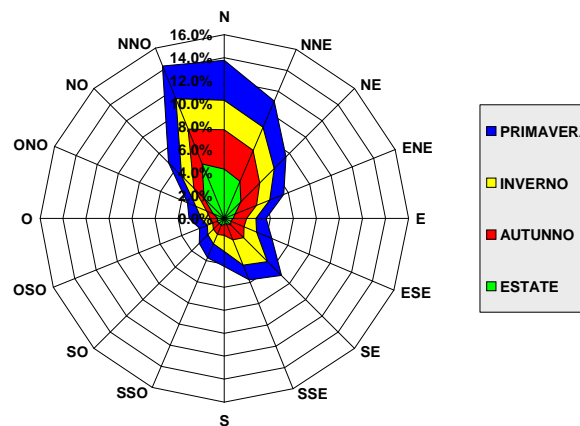
CLASSI DI STABILITÀ



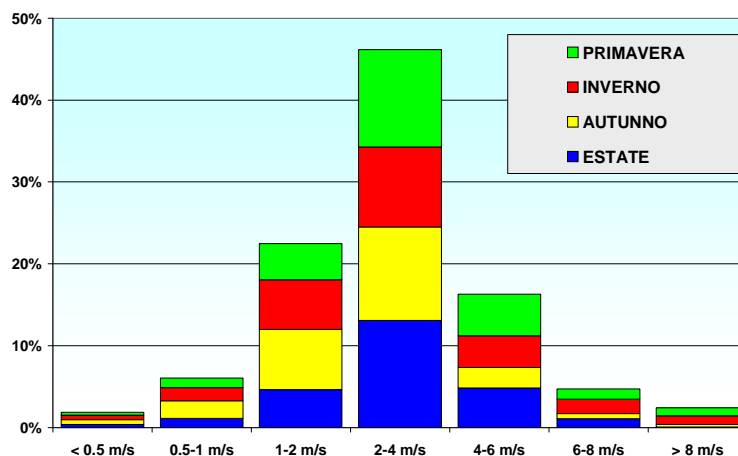
ALTEZZA DI RIMESCOLAMENTO



DIREZIONE DEL VENTO

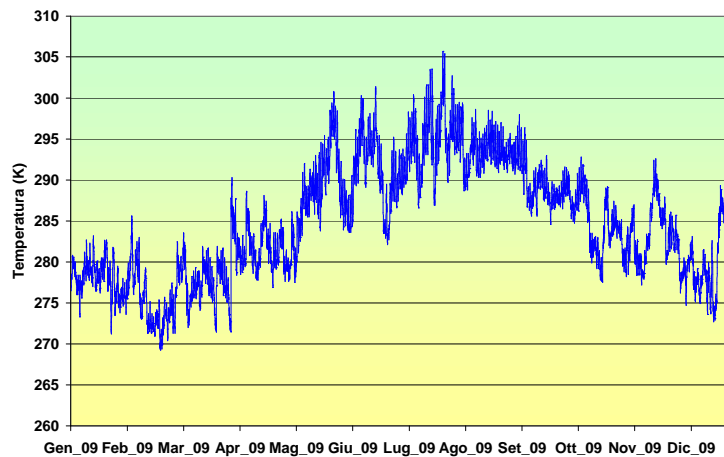


VELOCITÀ DEL VENTO

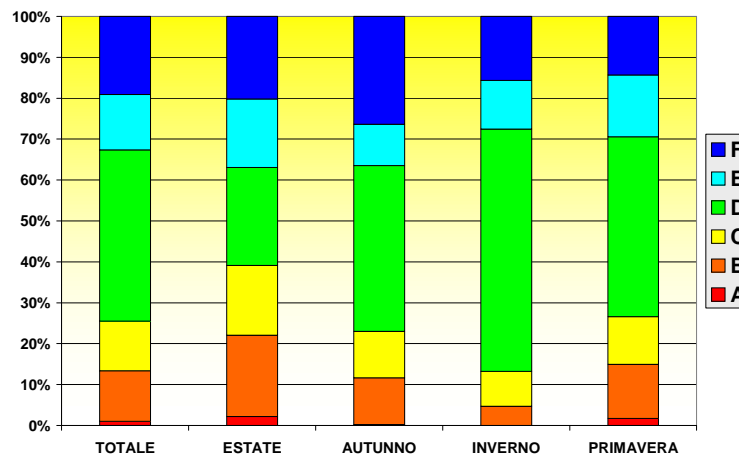


**PUNTO 20
38.108N - 15.780E**

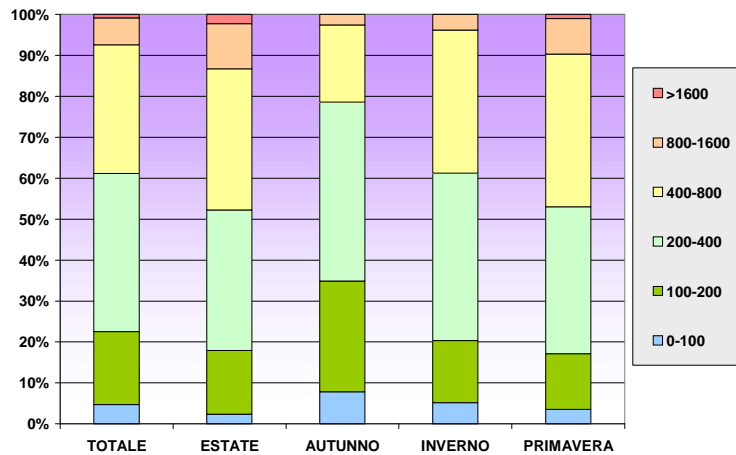
TEMPERATURA



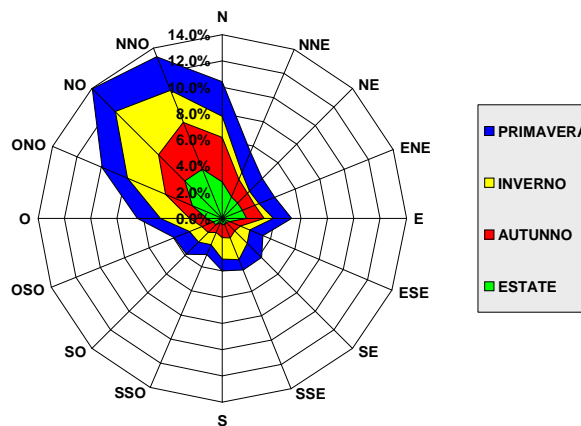
CLASSI DI STABILITÀ



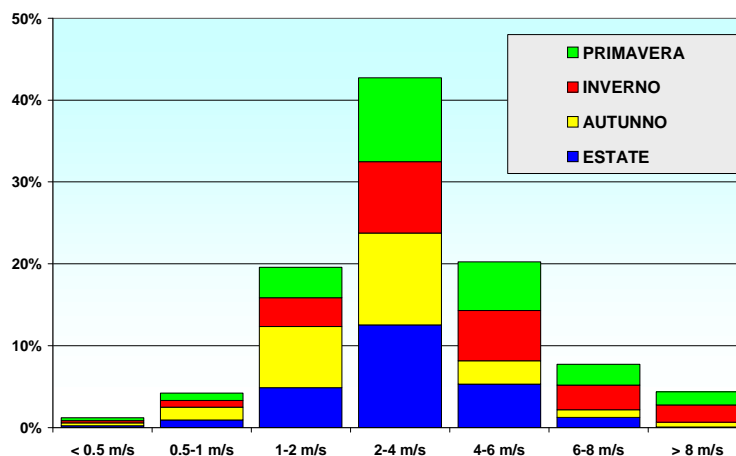
ALTEZZA DI RIMESCOLAMENTO



DIREZIONE DEL VENTO

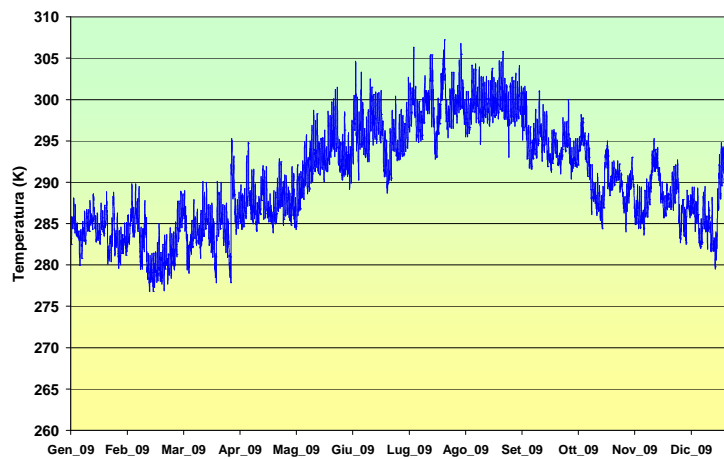


VELOCITÀ DEL VENTO

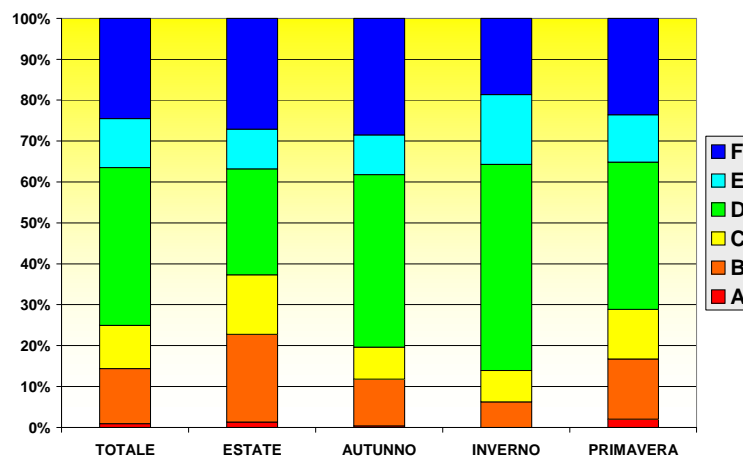


**PUNTO 21
38.201°N - 15.338°E**

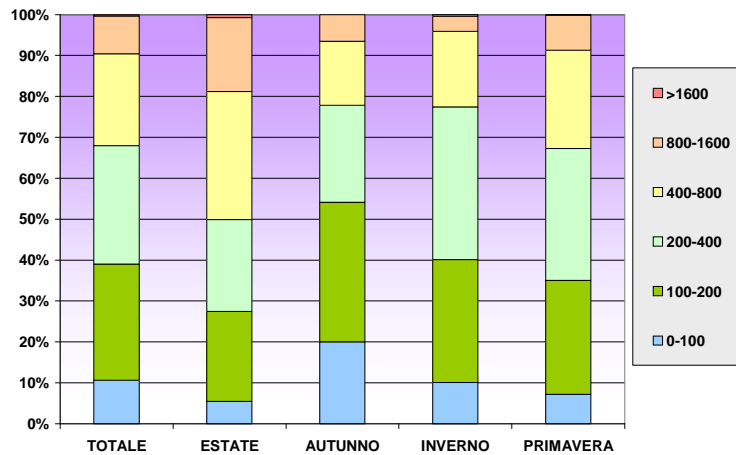
TEMPERATURA



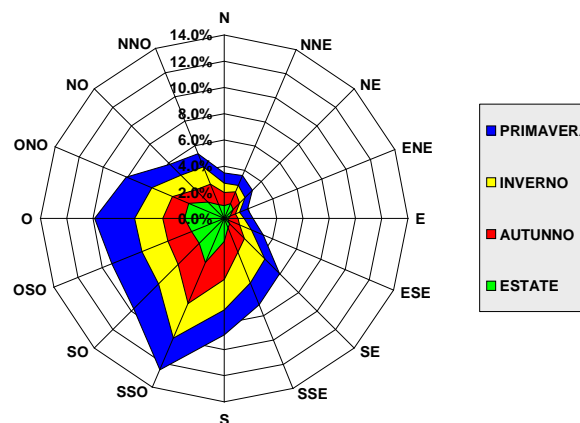
CLASSI DI STABILITÀ



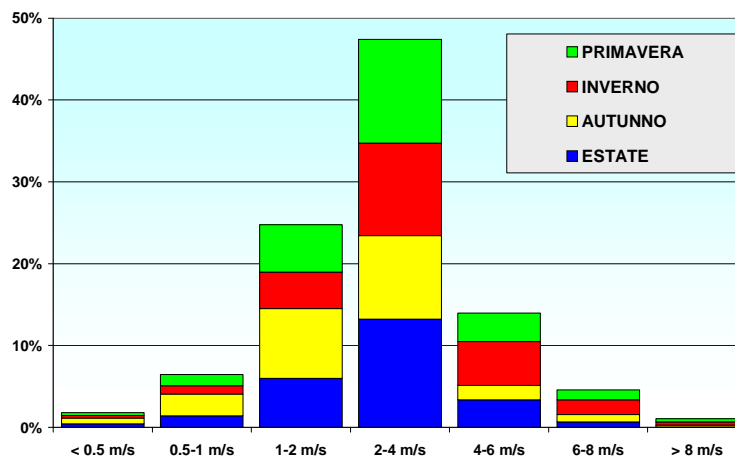
ALTEZZA DI RIMESCOLAMENTO



DIREZIONE DEL VENTO

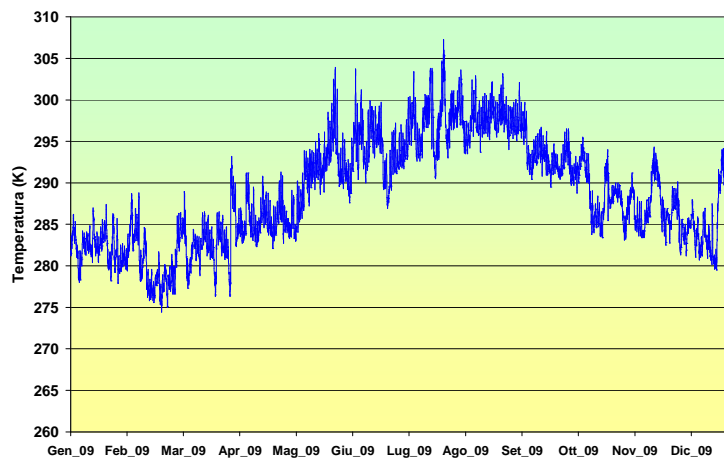


VELOCITÀ DEL VENTO

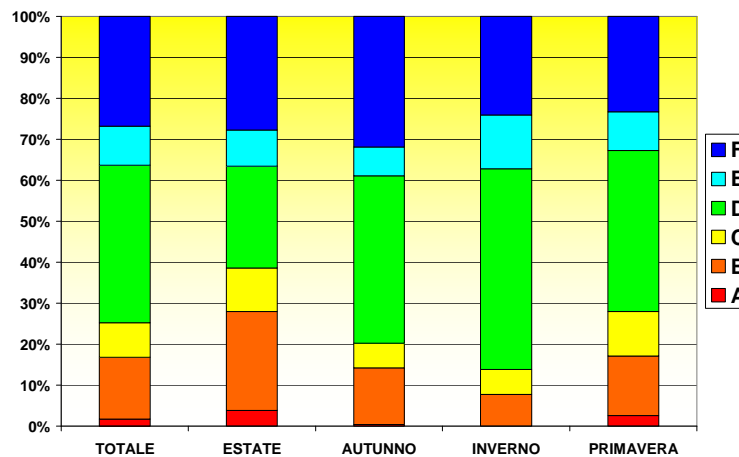


**PUNTO 22
38.289°N - 15.876°E**

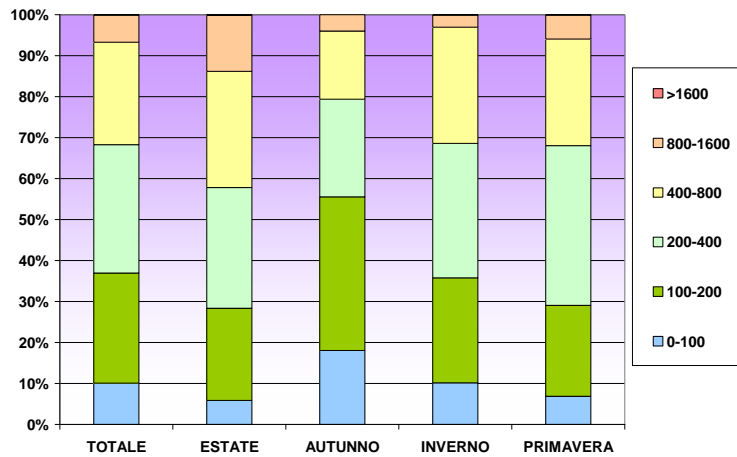
TEMPERATURA



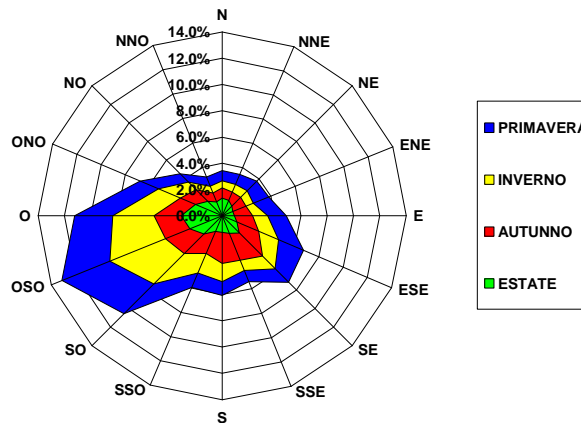
CLASSI DI STABILITÀ



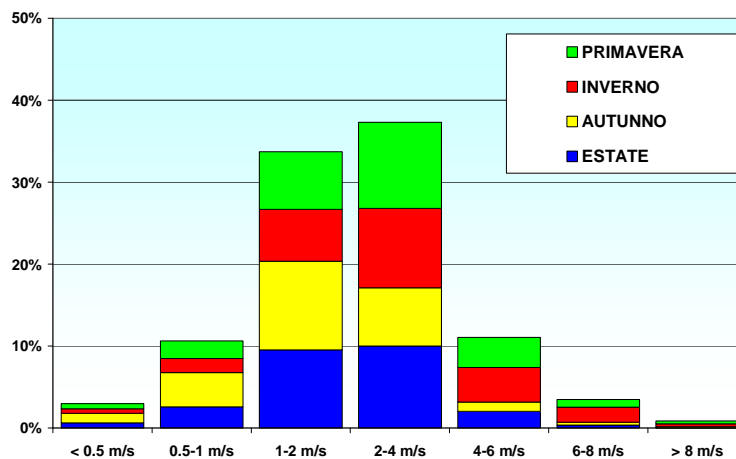
ALTEZZA DI RIMESCOLAMENTO



DIREZIONE DEL VENTO

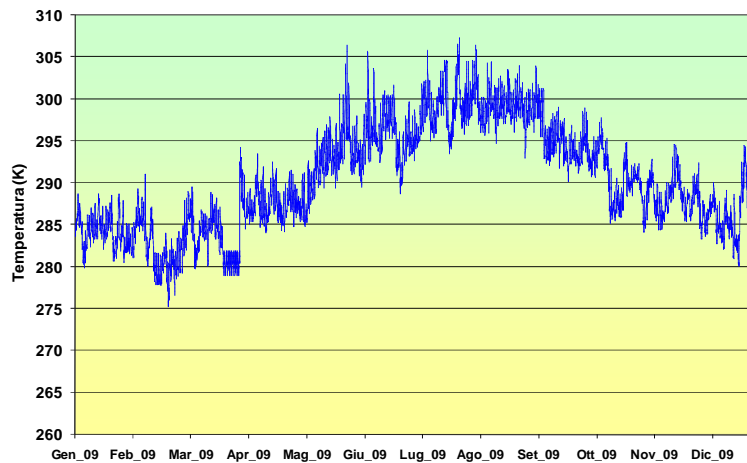


VELOCITÀ DEL VENTO

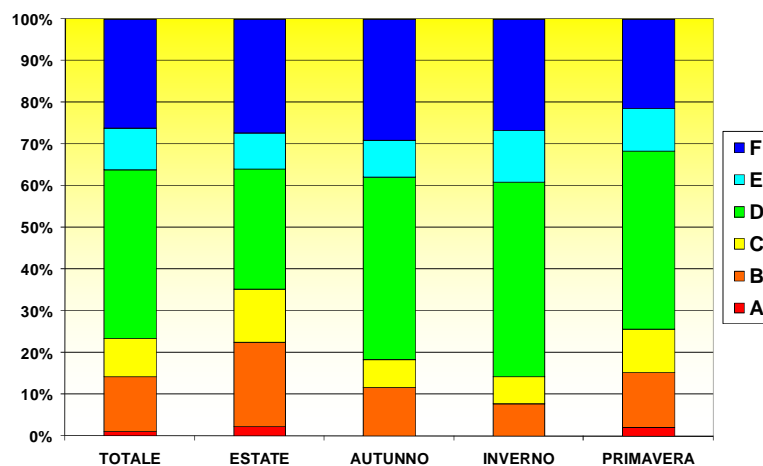


**PUNTO 23
38.351°N - 15.884°E**

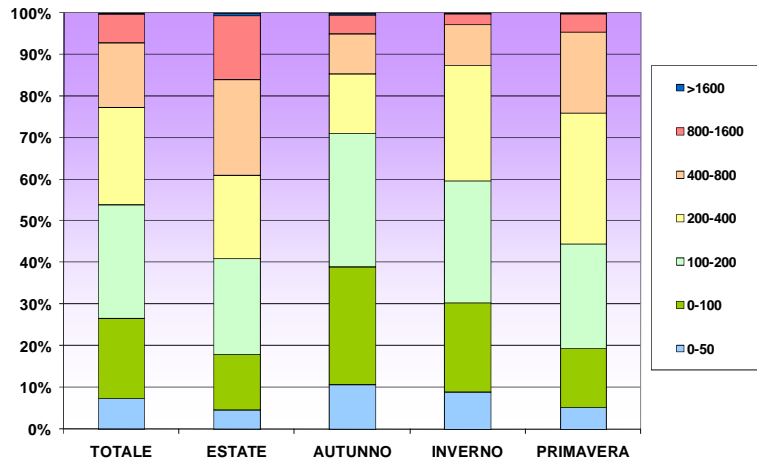
TEMPERATURA



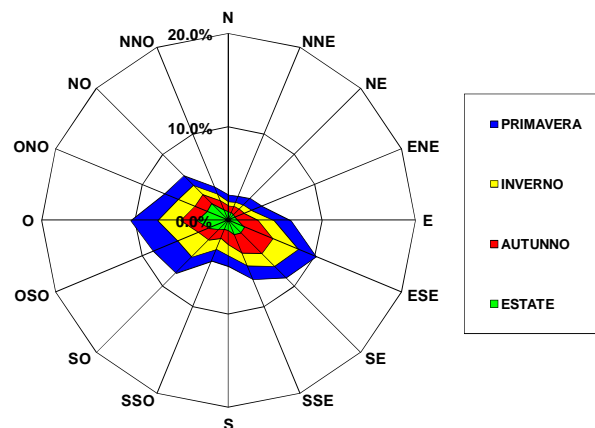
CLASSI DI STABILITÀ



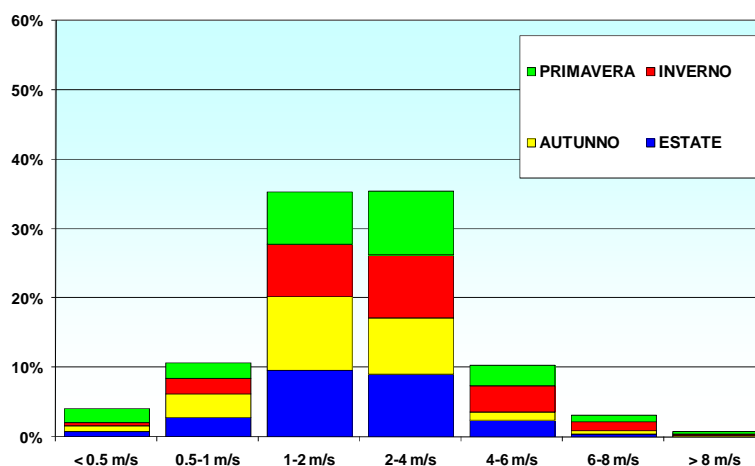
ALTEZZA DI RIMESCOLAMENTO



DIREZIONE DEL VENTO

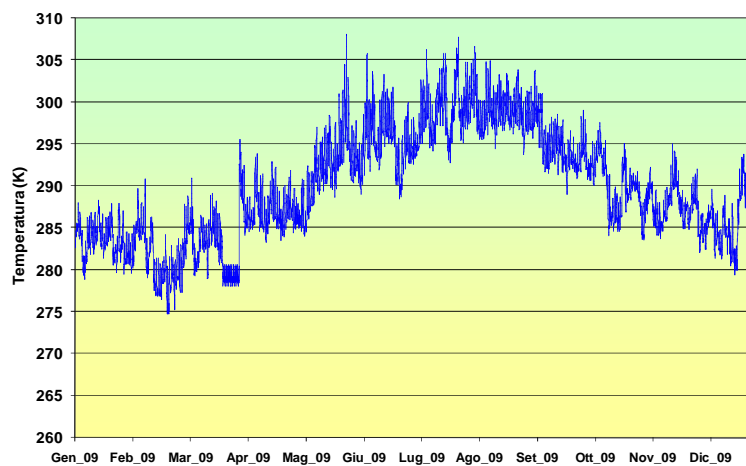


VELOCITÀ DEL VENTO

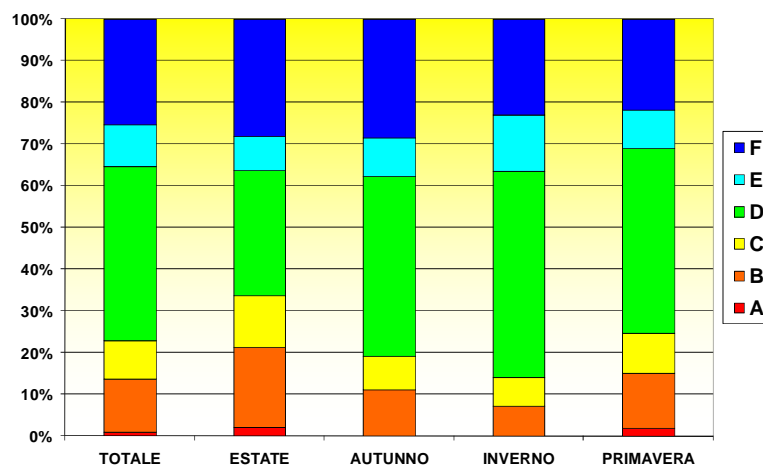


**PUNTO 24
38.346N - 15.959E**

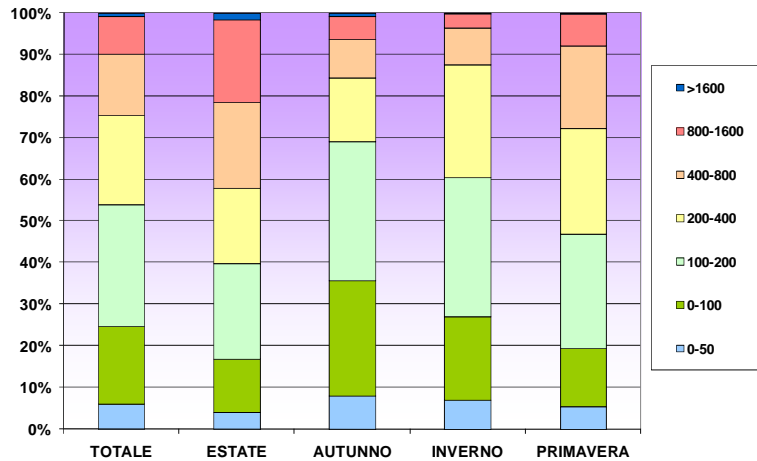
TEMPERATURA



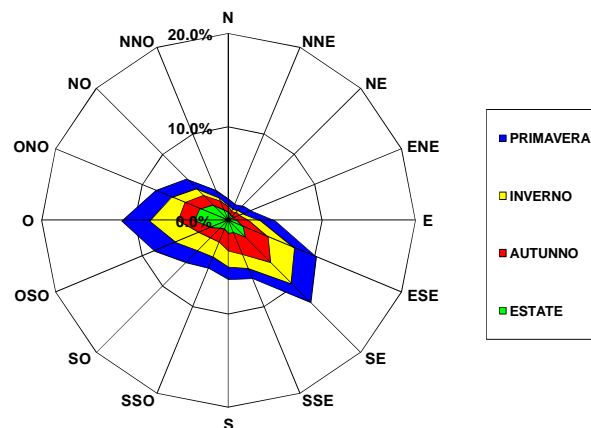
CLASSI DI STABILITÀ



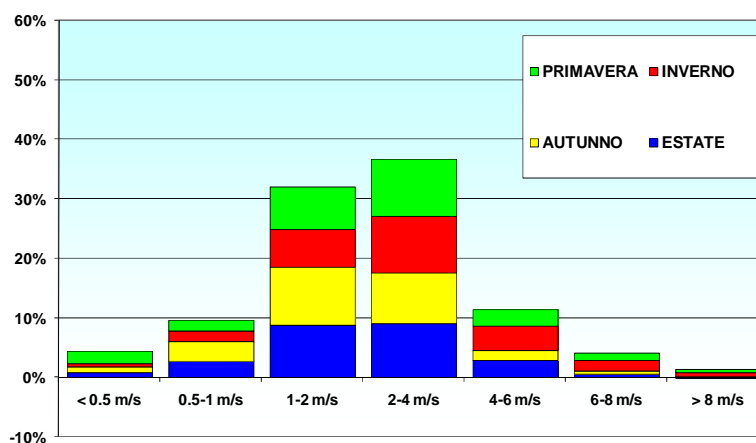
ALTEZZA DI RIMESCOLAMENTO



DIREZIONE DEL VENTO

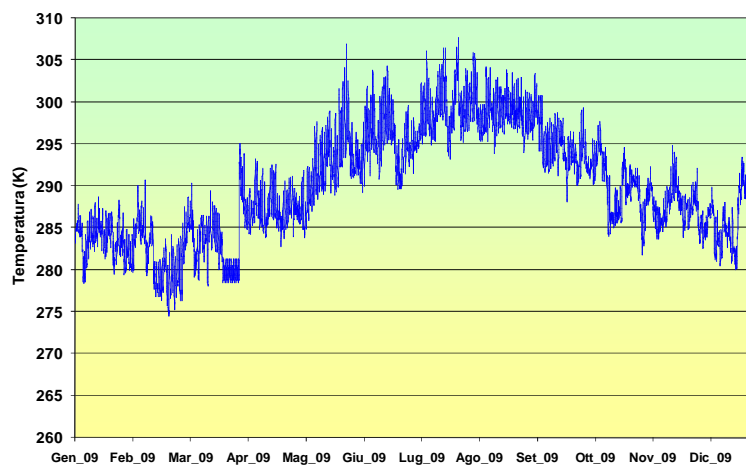


VELOCITÀ DEL VENTO

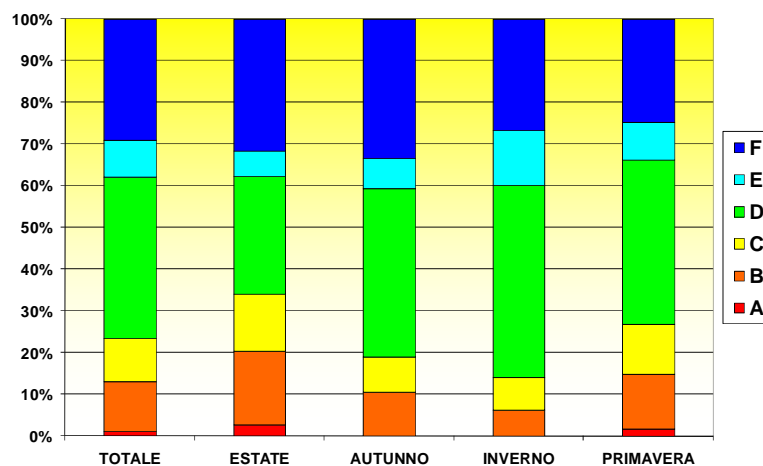


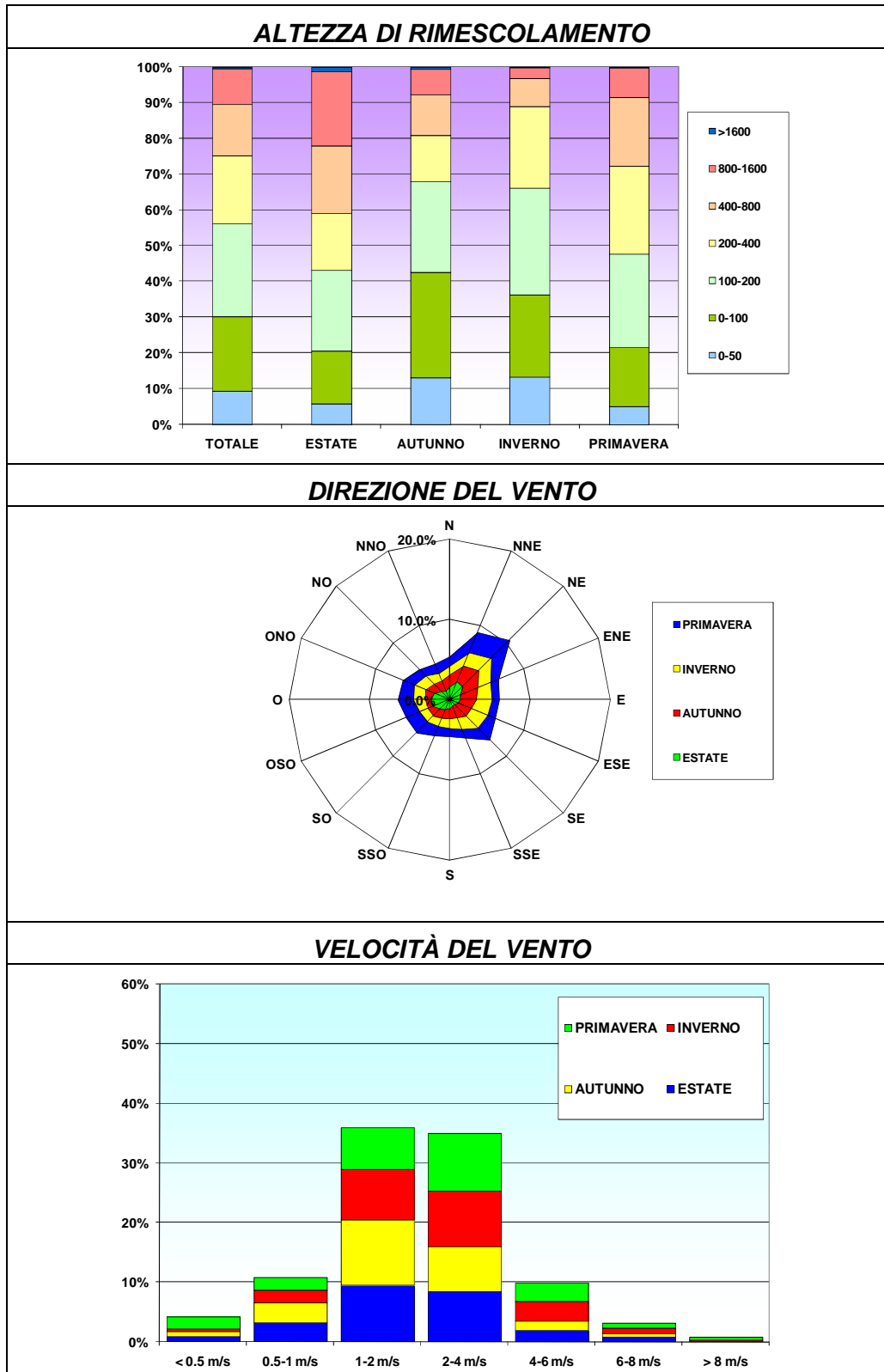
**PUNTO 25
38.533N - 15.981E**

TEMPERATURA



CLASSI DI STABILITÀ





		<p align="center">Ponte sullo Stretto di Messina PROGETTO DEFINITIVO Alternative ai siti di deposito</p>		
<p align="center">SCHEDATURA DATI METEOROLOGICI E DI INQUINAMENTO ATMOSFERICO</p>	<p><i>Codice documento</i> AMV0544_F0.doc</p>	<p><i>Rev</i> F0</p>	<p><i>Data</i> 31/05/2012</p>	

2 DATI INQUINAMENTO ATMOSFERICO

		Ponte sullo Stretto di Messina PROGETTO DEFINITIVO Alternative ai siti di deposito	
SCHEDATURA DATI METEOROLOGICI E DI INQUINAMENTO ATMOSFERICO	Codice documento AMV0544_F0.doc	Rev F0	Data 31/05/2012

Inquinante

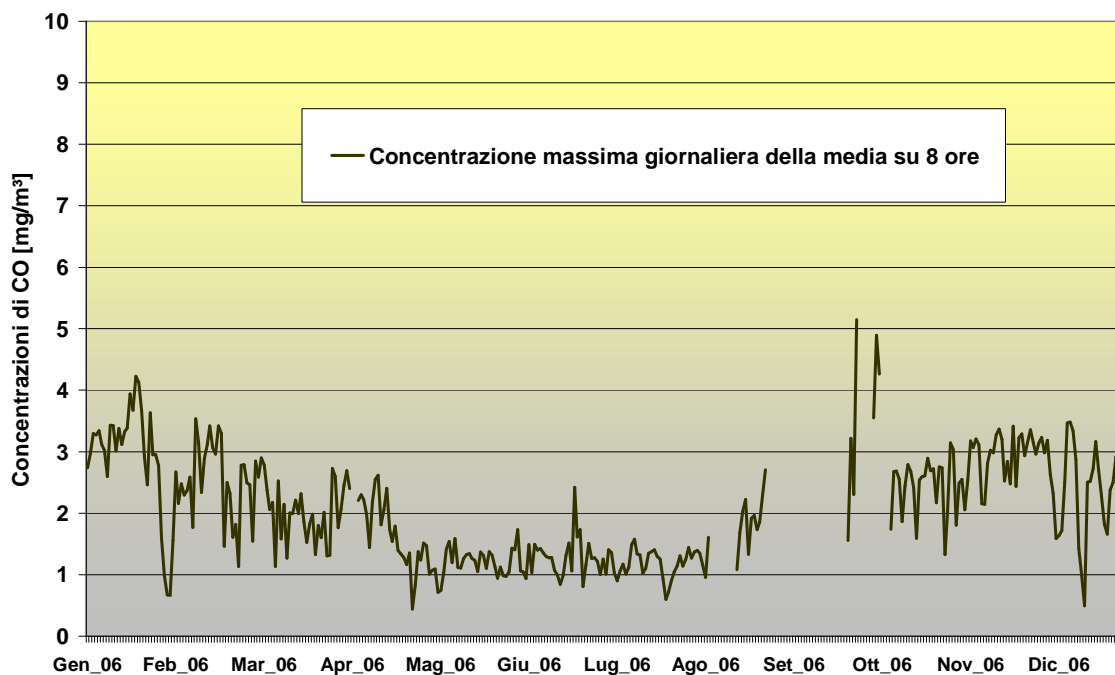
MONOSSIDO DI CARBONIO (CO)

Dati disponibili

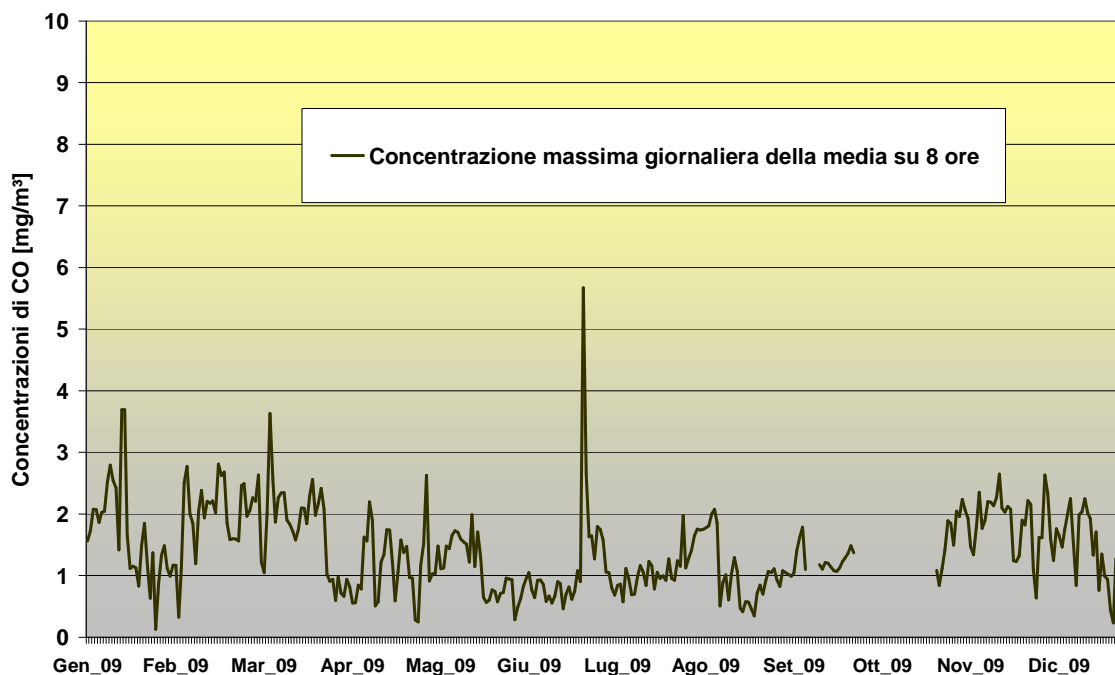
Centralina	Anno
Archimede (MESSINA)	2006
Archimede (MESSINA)	2009
Bocchetta (MESSINA)	2006
Bocchetta (MESSINA)	2009
Caronte (MESSINA)	2006
Caronte (MESSINA)	2009
Università (MESSINA)	2006
Università (MESSINA)	2009
Minissale (MESSINA)	2009
Piazza Castello (REGGIO CALABRIA)	2009

		Ponte sullo Stretto di Messina PROGETTO DEFINITIVO	
SCHEDATURA DATI METEOROLOGICI E DI INQUINAMENTO ATMOSFERICO		Codice documento AMV0544_F0.doc	Rev F0 Data 31/05/2012
Alternative ai siti di deposito			

Archimede (MESSINA) - 2006

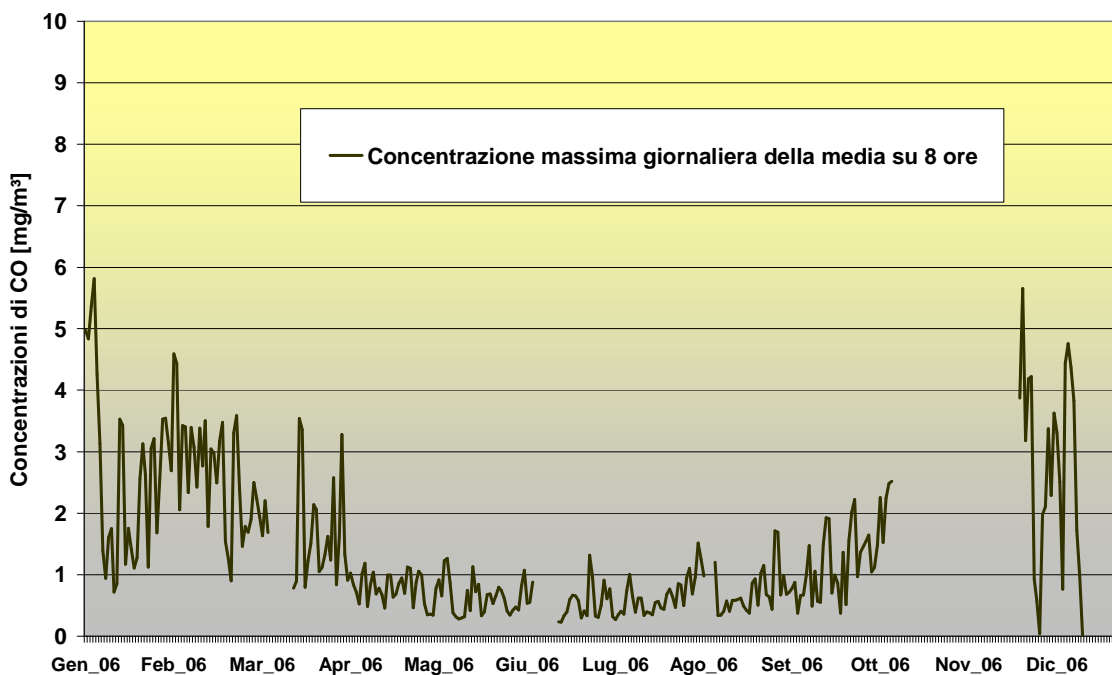


Archimede (MESSINA) - 2009

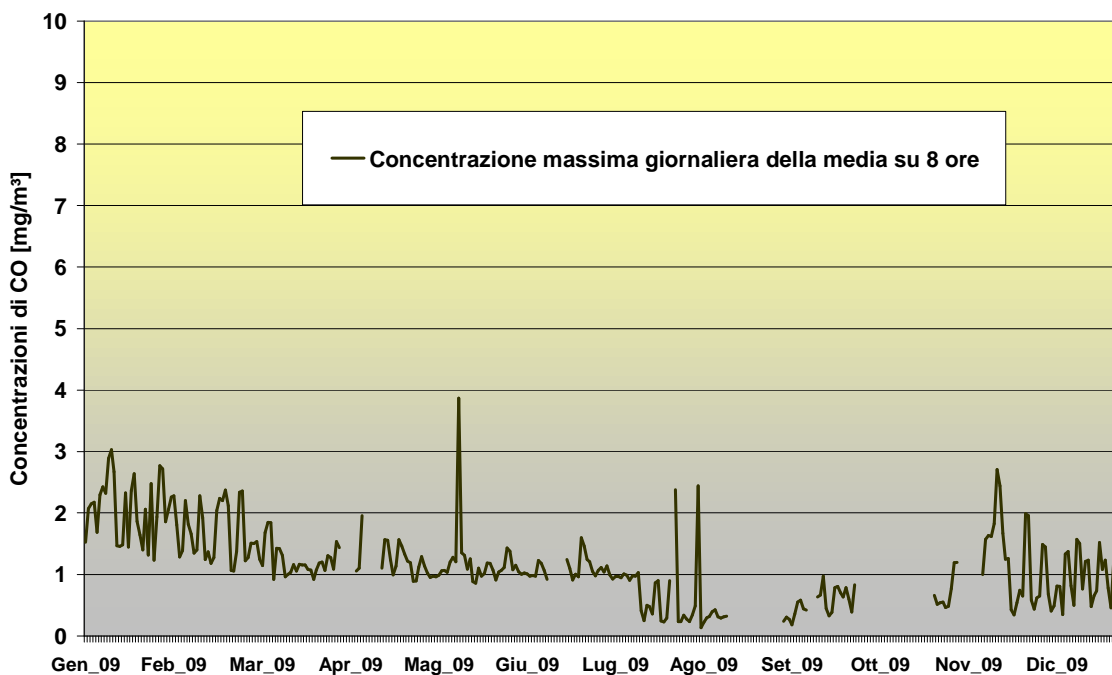


		Ponte sullo Stretto di Messina PROGETTO DEFINITIVO Alternative ai siti di deposito	
SCHEDATURA DATI METEOROLOGICI E DI INQUINAMENTO ATMOSFERICO	Codice documento <i>AMV0544_F0.doc</i>	Rev <i>F0</i>	Data <i>31/05/2012</i>

Bocchetta (MESSINA) – 2006

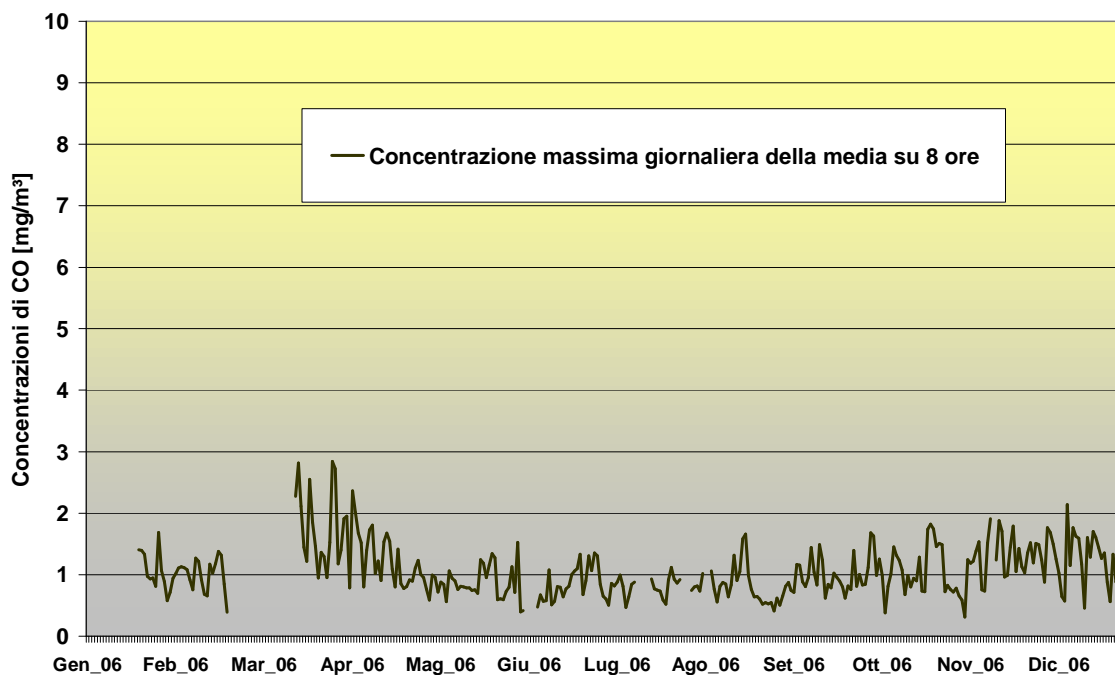


Bocchetta (MESSINA) – 2009

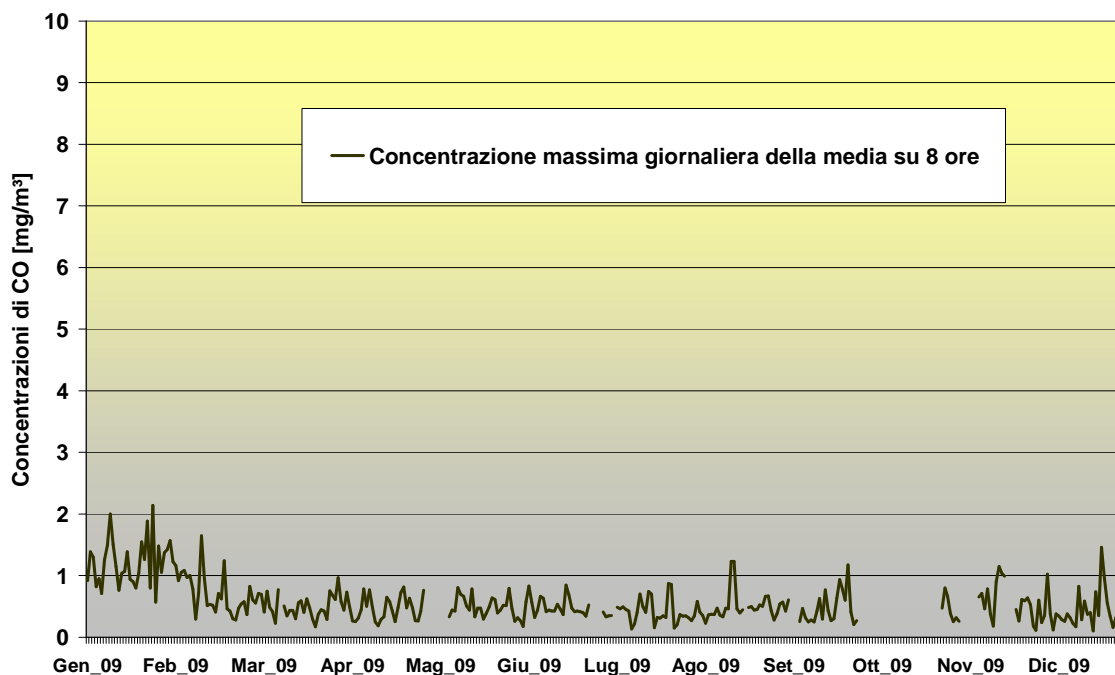


		Ponte sullo Stretto di Messina PROGETTO DEFINITIVO Alternative ai siti di deposito	
SCHEDATURA DATI METEOROLOGICI E DI INQUINAMENTO ATMOSFERICO	Codice documento <i>AMV0544_F0.doc</i>	Rev F0	Data 31/05/2012

Caronte (MESSINA) – 2006

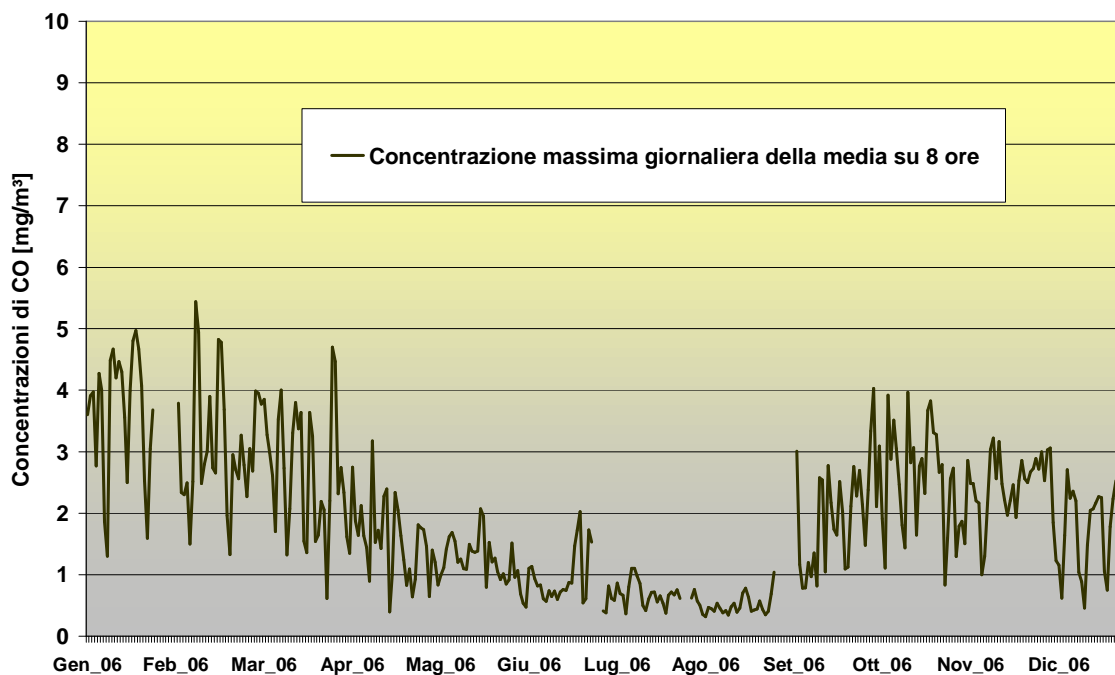


Caronte (MESSINA) – 2009

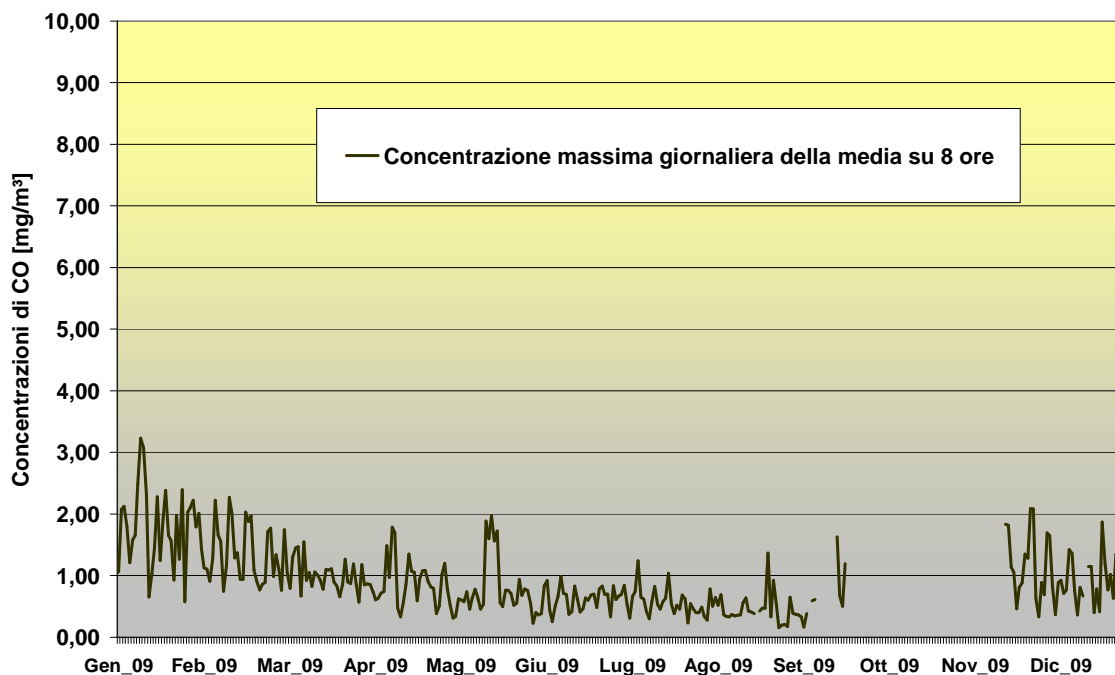


		Ponte sullo Stretto di Messina PROGETTO DEFINITIVO Alternative ai siti di deposito	
SCHEDATURA DATI METEOROLOGICI E DI INQUINAMENTO ATMOSFERICO	Codice documento <i>AMV0544_F0.doc</i>	Rev F0	Data 31/05/2012

Università (MESSINA) – 2006

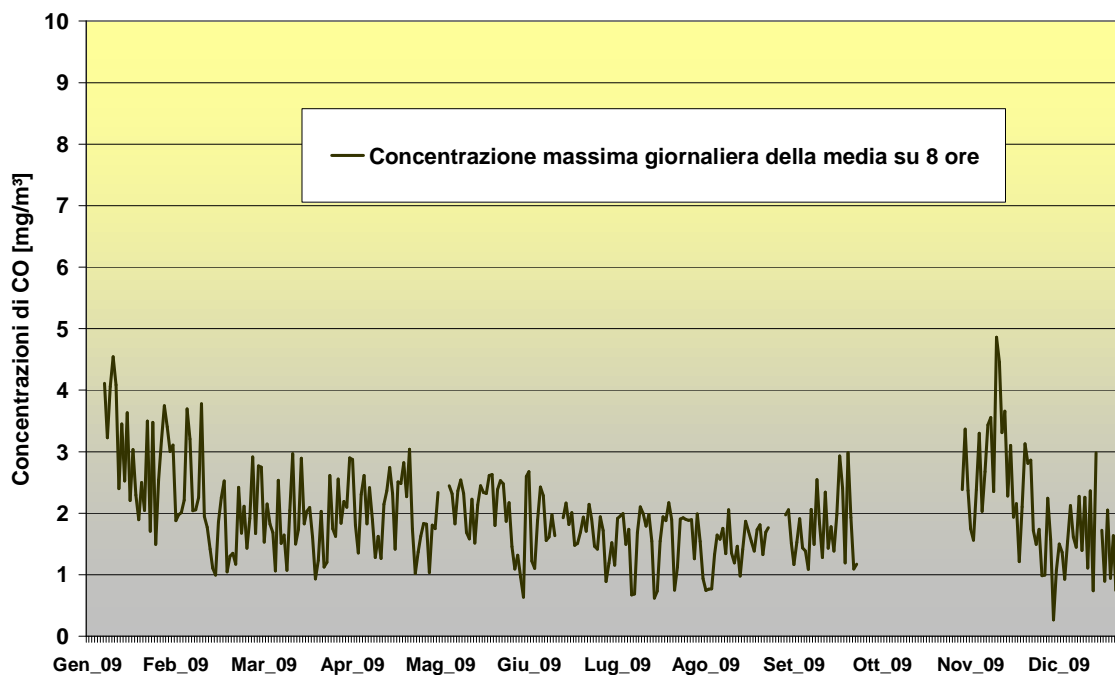


Università (MESSINA) – 2009

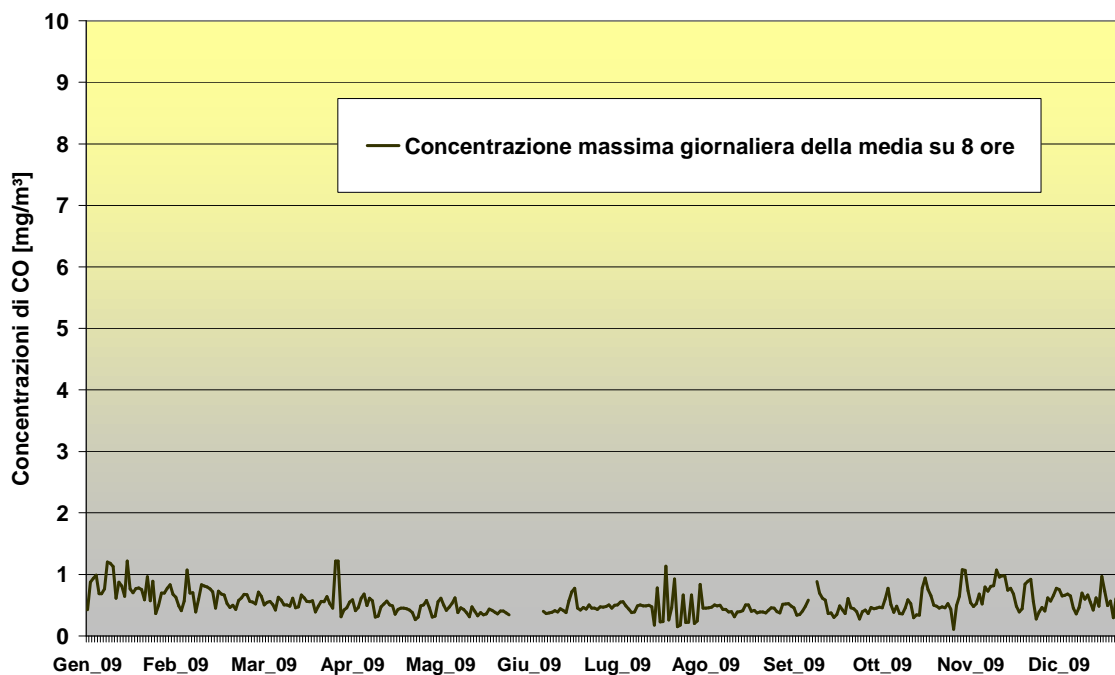


		Ponte sullo Stretto di Messina PROGETTO DEFINITIVO Alternative ai siti di deposito	
SCHEDATURA DATI METEOROLOGICI E DI INQUINAMENTO ATMOSFERICO	Codice documento <i>AMV0544_F0.doc</i>	Rev F0	Data 31/05/2012

Minissale (MESSINA) – 2009



Piazza Castello (REGGIO CALABRIA) – 2009



		<p align="center">Ponte sullo Stretto di Messina PROGETTO DEFINITIVO Alternative ai siti di deposito</p>	
SCHEDATURA DATI METEOROLOGICI E DI INQUINAMENTO ATMOSFERICO	<i>Codice documento</i> AMV0544_F0.doc	<i>Rev</i> F0	<i>Data</i> 31/05/2012

Inquinante

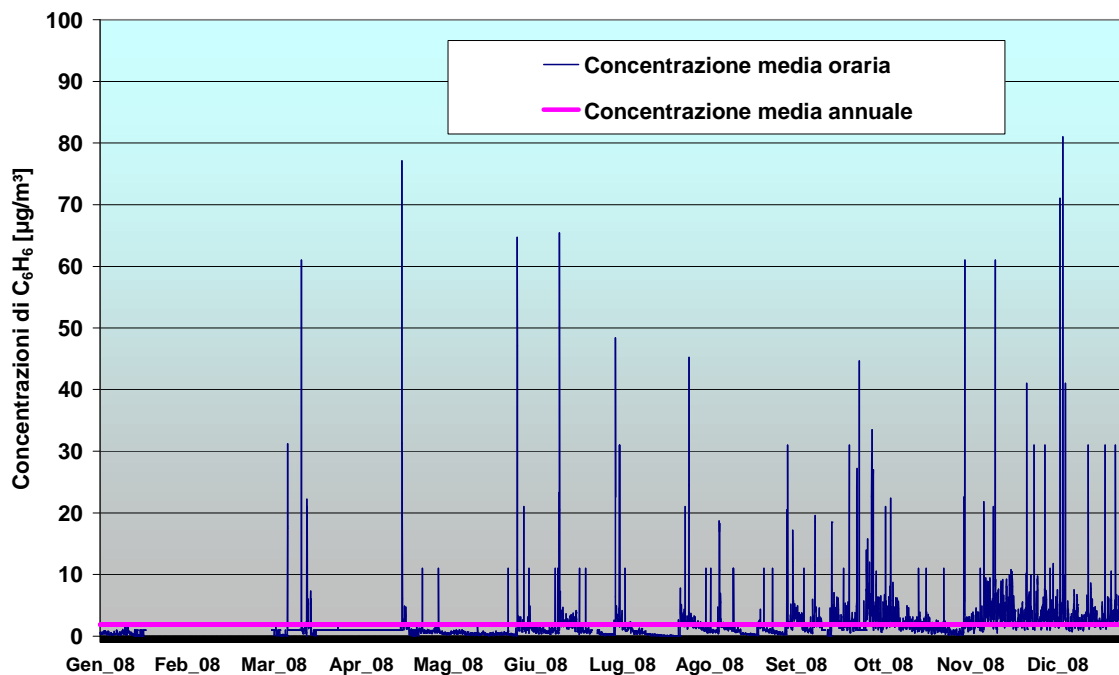
BENZENE (C₆H₆)

Dati disponibili

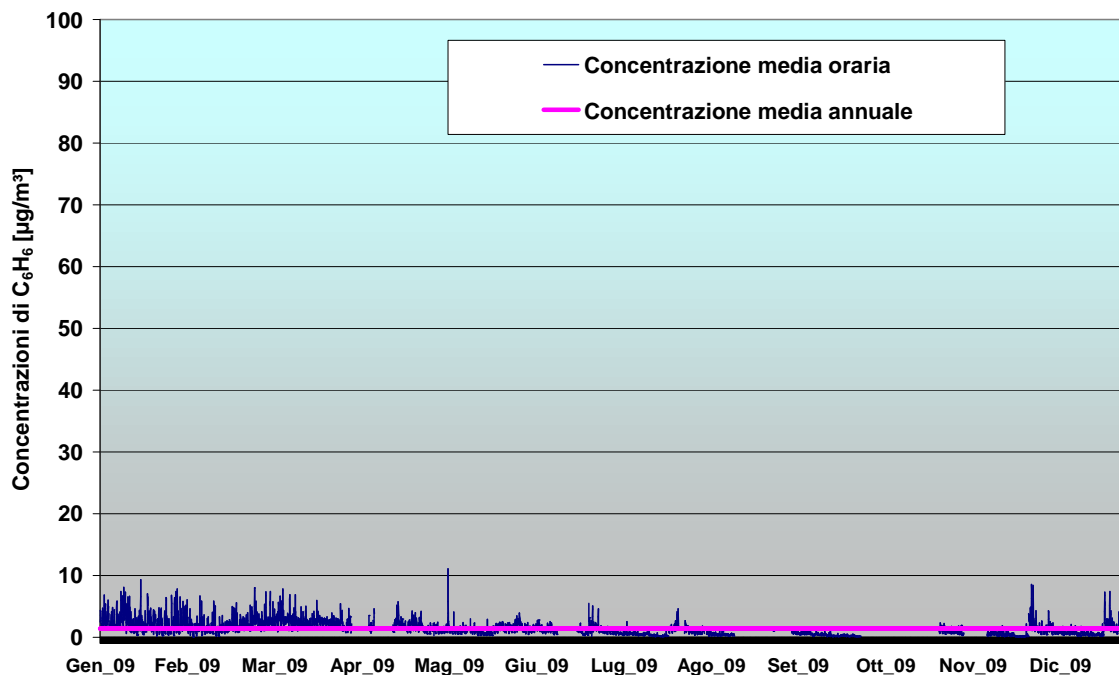
Centralina	Anno
Bocchetta (MESSINA)	2008
Bocchetta (MESSINA)	2009
Università (MESSINA)	2008
Università (MESSINA)	2009
Caronte (MESSINA)	2006
Caronte (MESSINA)	2008
Caronte (MESSINA)	2009
Piazza Castello (REGGIO CALABRIA)	2009

		Ponte sullo Stretto di Messina PROGETTO DEFINITIVO	
SCHEDATURA DATI METEOROLOGICI E DI INQUINAMENTO ATMOSFERICO		Alternative ai siti di deposito Codice documento: AMV0544_F0.doc Rev: F0 Data: 31/05/2012	

Bocchetta (MESSINA) – 2008

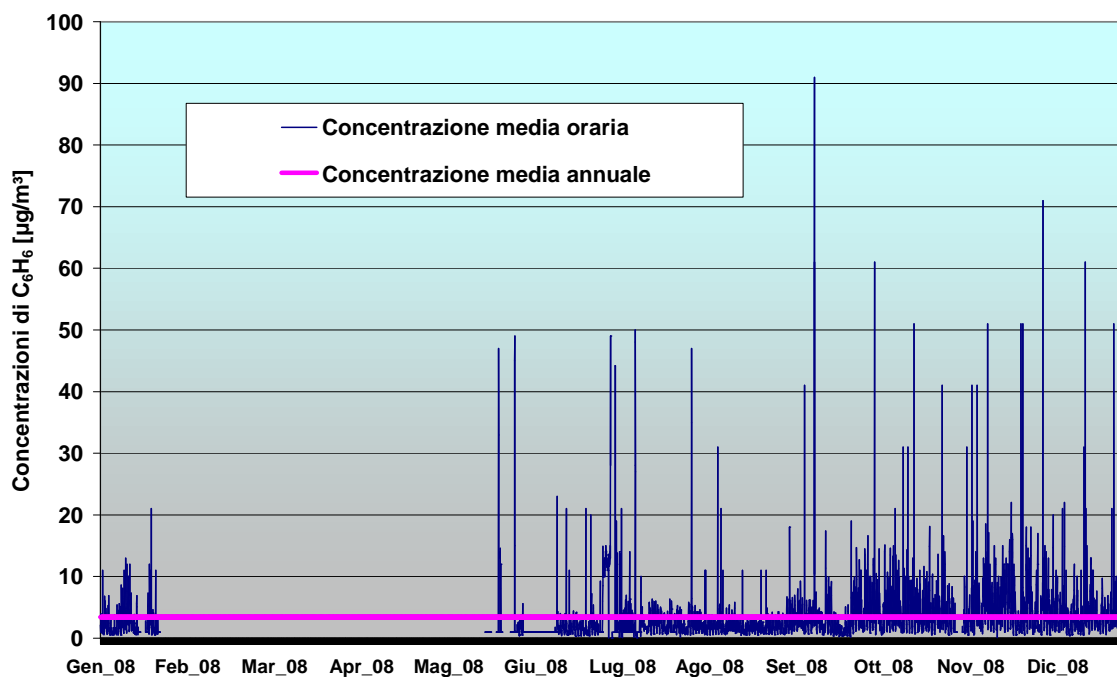


Bocchetta (MESSINA) – 2009

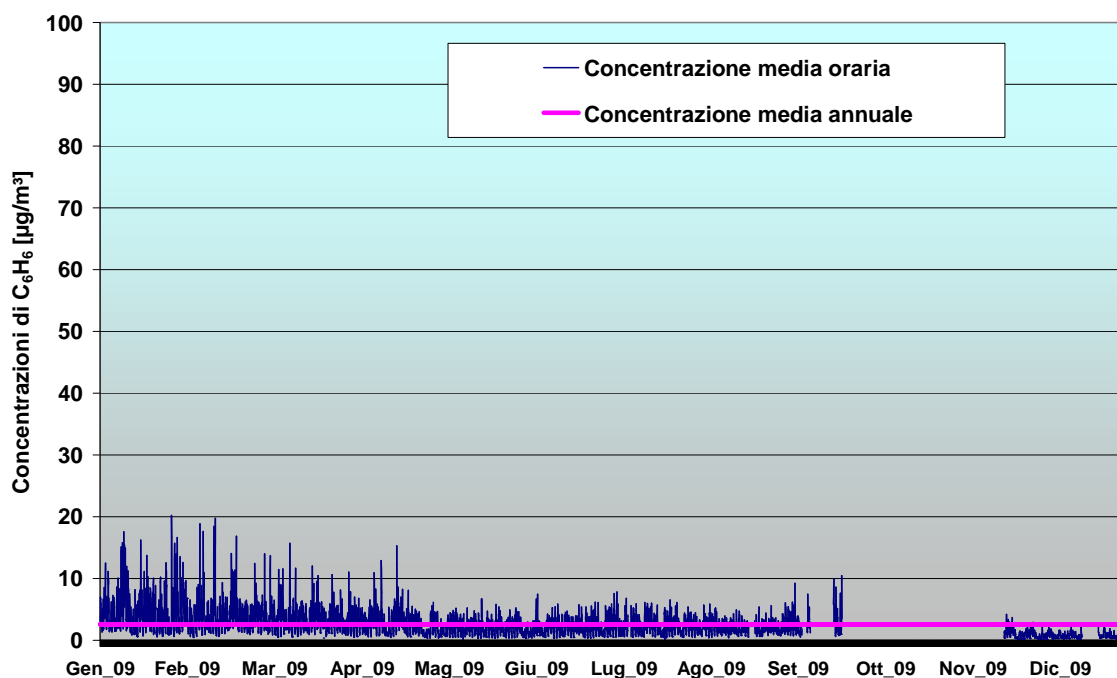


 Stretto di Messina		Ponte sullo Stretto di Messina PROGETTO DEFINITIVO		
SCHEDATURA DATI METEOROLOGICI E DI INQUINAMENTO ATMOSFERICO		Codice documento AMV0544_F0.doc	Rev F0	Data 31/05/2012
Alternative ai siti di deposito				

Università (MESSINA) – 2008

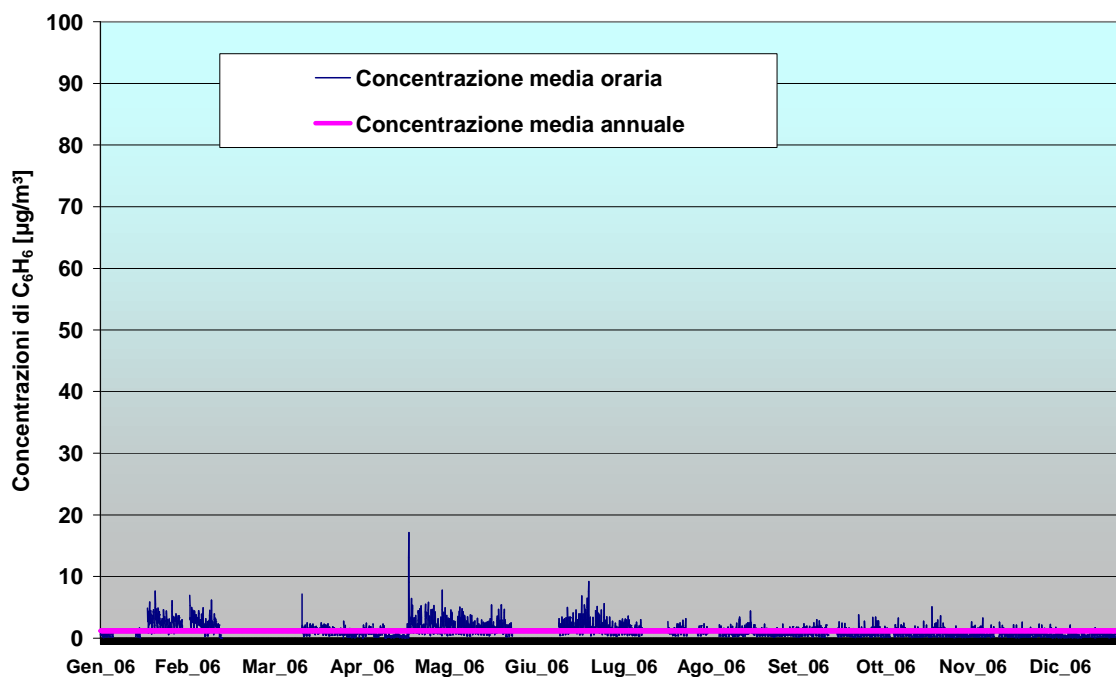


Università (MESSINA) - 2009

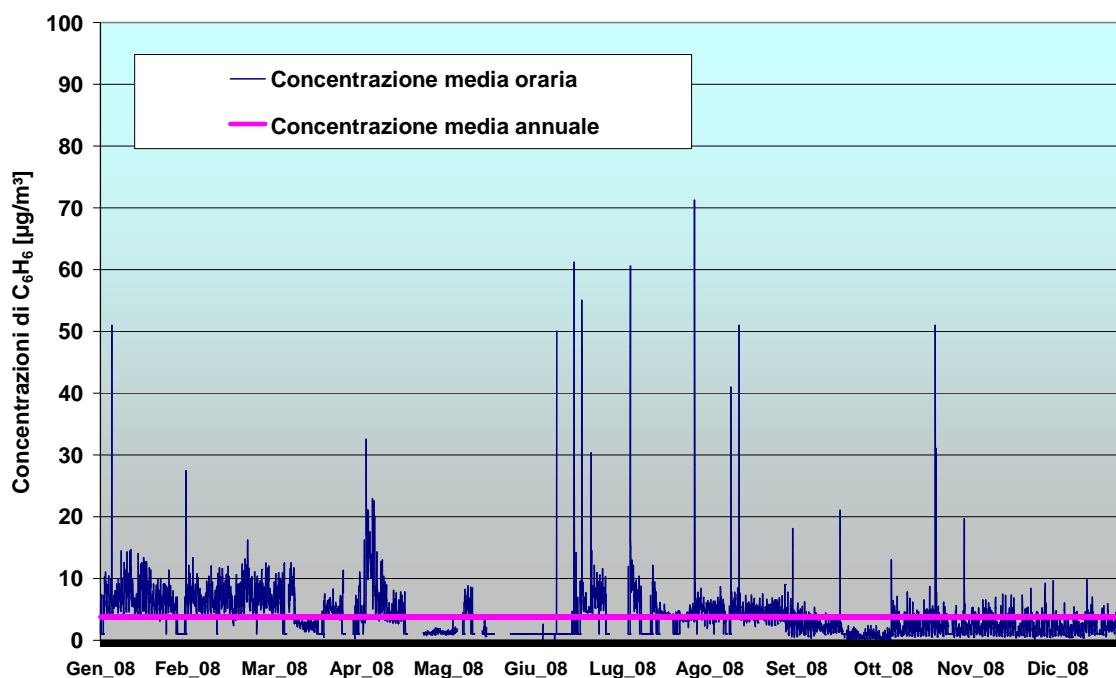


		Ponte sullo Stretto di Messina PROGETTO DEFINITIVO		
SCHEDATURA DATI METEOROLOGICI E DI INQUINAMENTO ATMOSFERICO		Codice documento AMV0544_F0.doc	Rev F0	Data 31/05/2012
Alternative ai siti di deposito				

Caronte (MESSINA) – 2006

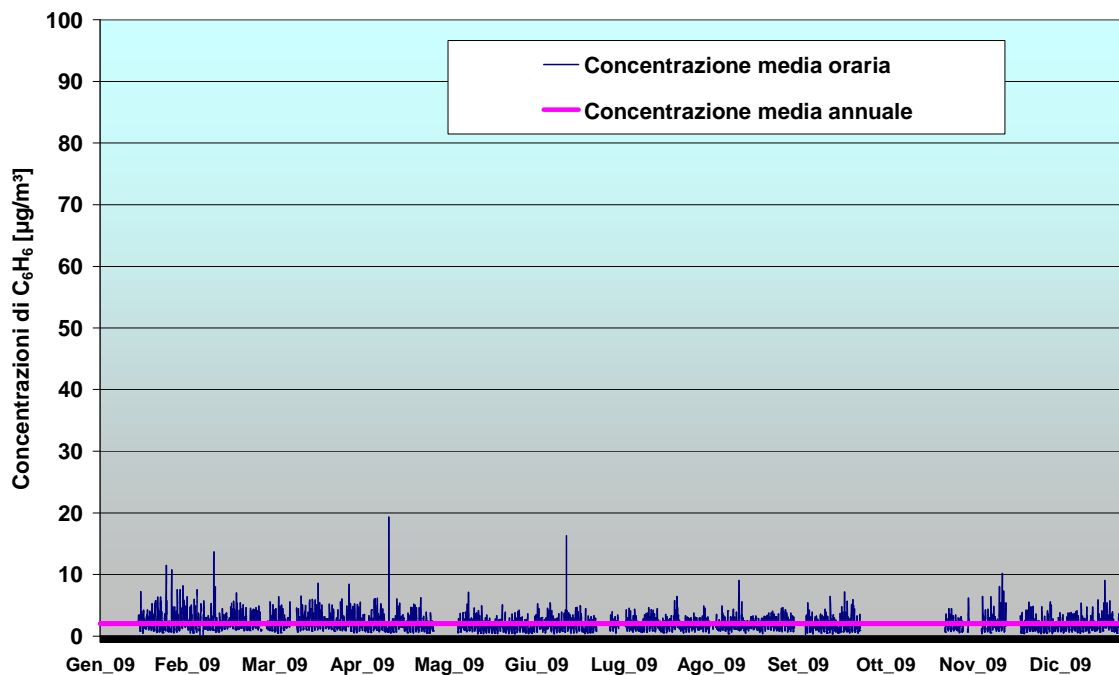


Caronte (MESSINA) - 2008

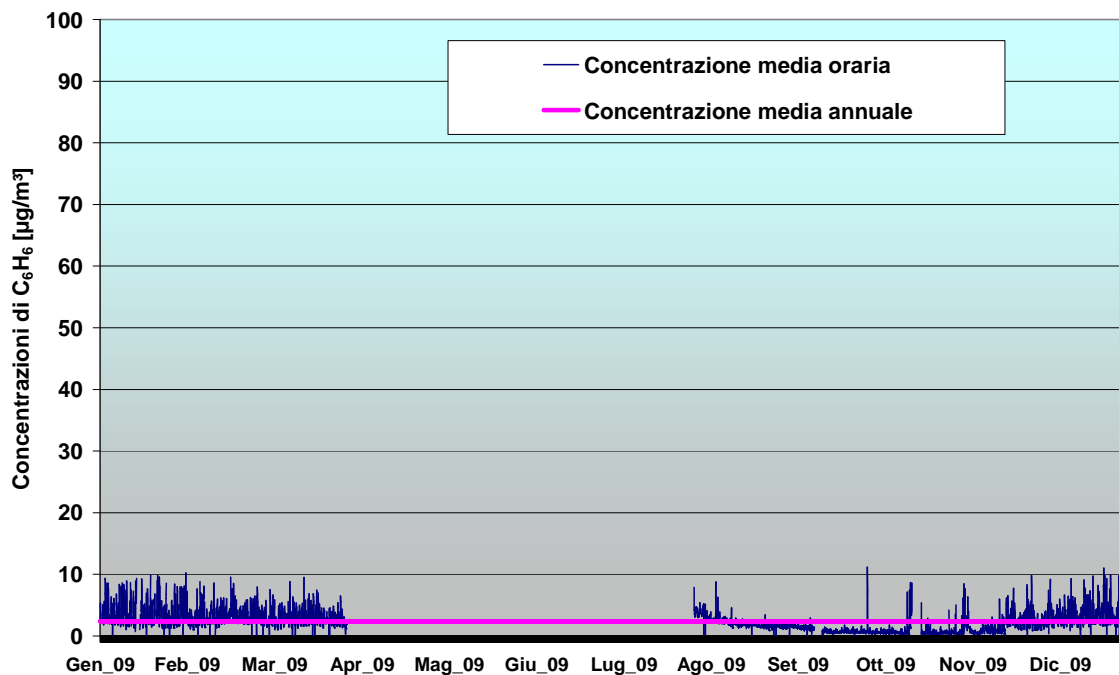


		Ponte sullo Stretto di Messina PROGETTO DEFINITIVO		
SCHEDATURA DATI METEOROLOGICI E DI INQUINAMENTO ATMOSFERICO		Codice documento AMV0544_F0.doc	Rev F0	Data 31/05/2012
Alternative ai siti di deposito				

Caronte (MESSINA) – 2009



Piazza Castello (REGGIO CALABRIA) – 2009



		<p align="center">Ponte sullo Stretto di Messina PROGETTO DEFINITIVO Alternative ai siti di deposito</p>		
<p align="center">SCHEDATURA DATI METEOROLOGICI E DI INQUINAMENTO ATMOSFERICO</p>	<p><i>Codice documento</i> AMV0544_F0.doc</p>	<p><i>Rev</i> F0</p>	<p><i>Data</i> 31/05/2012</p>	

Inquinante

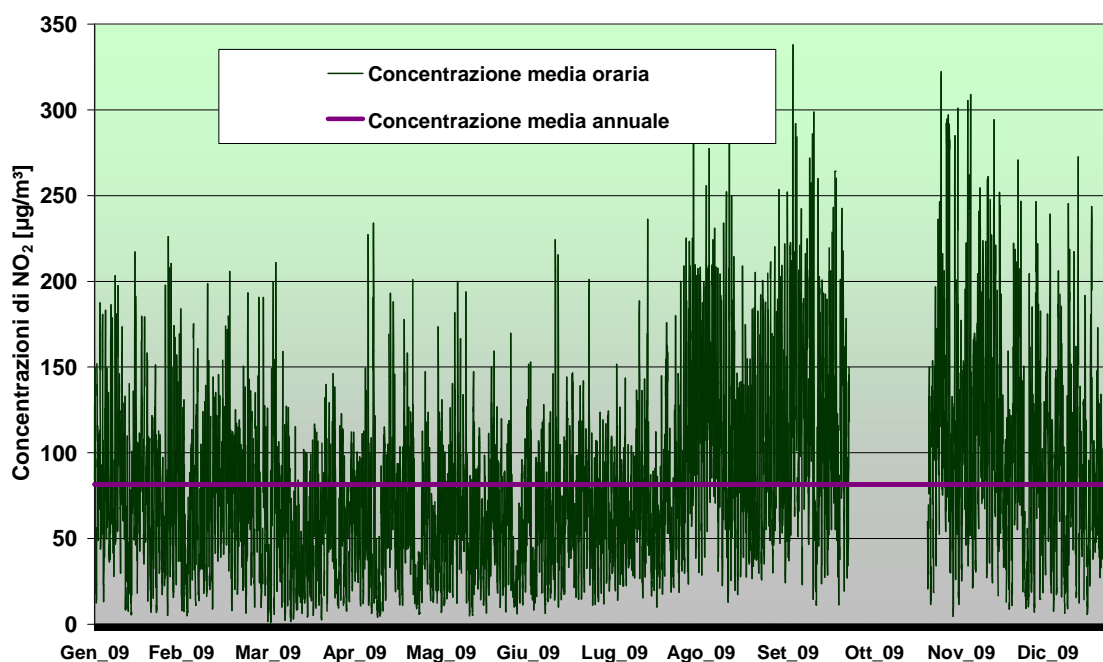
BIOSSIDO DI AZOTO (NO₂)

Dati disponibili

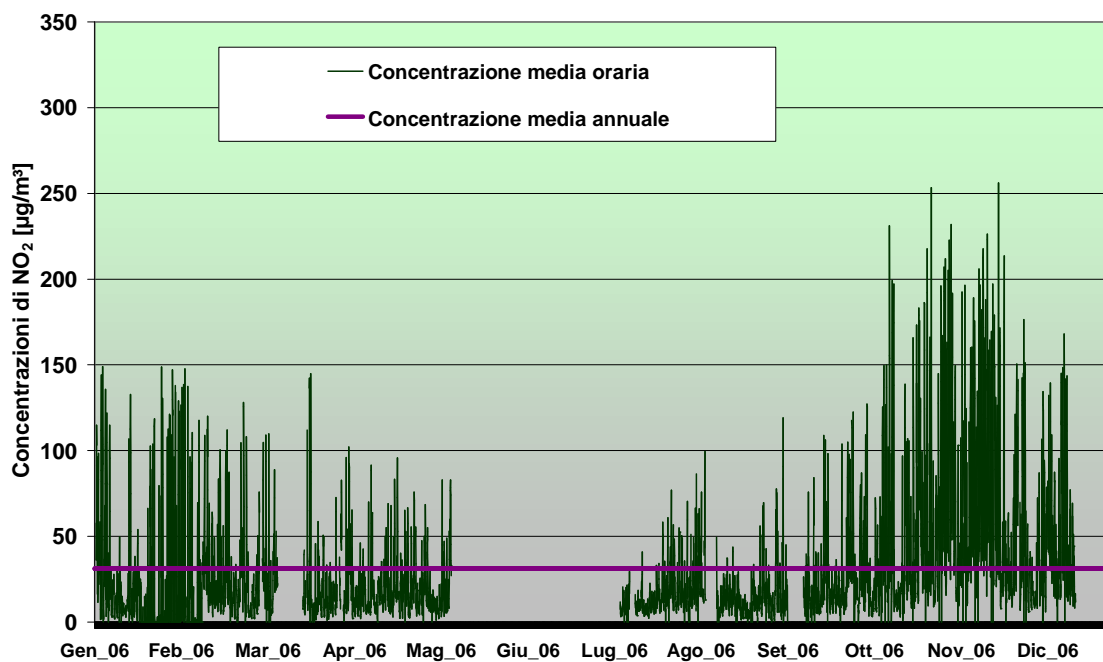
Centralina	Anno
Archimede (MESSINA)	2009
Bocchetta (MESSINA)	2006

		Ponte sullo Stretto di Messina PROGETTO DEFINITIVO		
SCHEDATURA DATI METEOROLOGICI E DI INQUINAMENTO ATMOSFERICO		Codice documento AMV0544_F0.doc	Rev F0	Data 31/05/2012
Alternative ai siti di deposito				

Archimede (MESSINA) – 2009



Bocchetta (MESSINA) – 2006



		<p align="center">Ponte sullo Stretto di Messina PROGETTO DEFINITIVO Alternative ai siti di deposito</p>	
<p align="center">SCHEDATURA DATI METEOROLOGICI E DI INQUINAMENTO ATMOSFERICO</p>	<p><i>Codice documento</i> AMV0544_F0.doc</p>	<p><i>Rev</i> F0</p>	<p><i>Data</i> 31/05/2012</p>

Inquinante

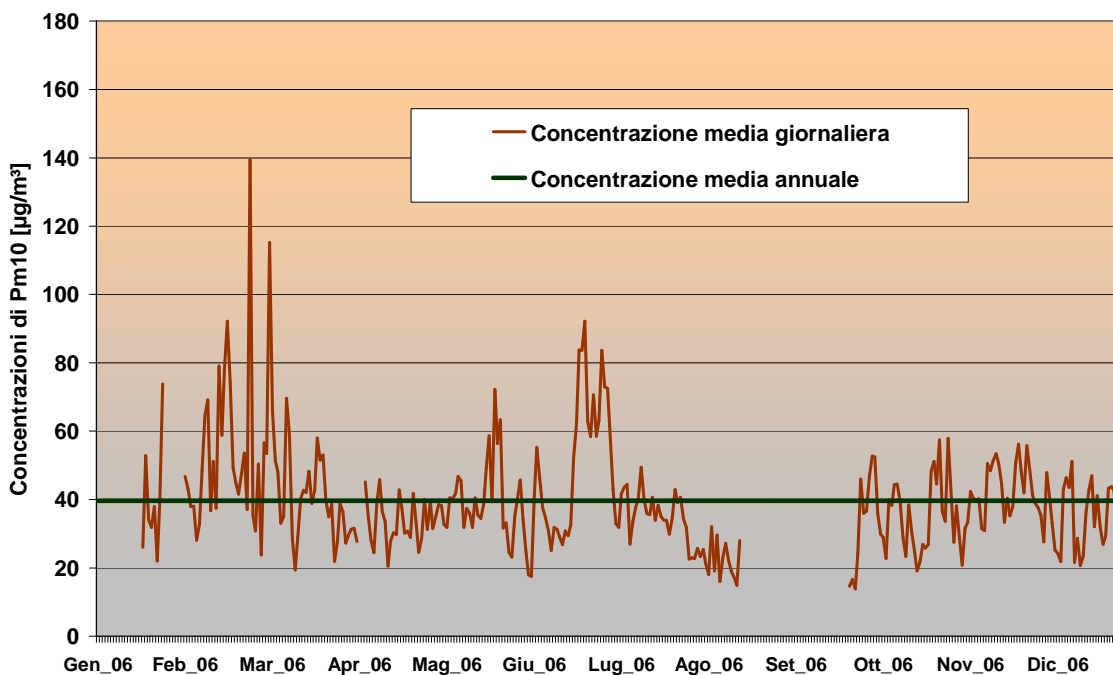
POLVERI INALABILI (Pm10)

Dati disponibili

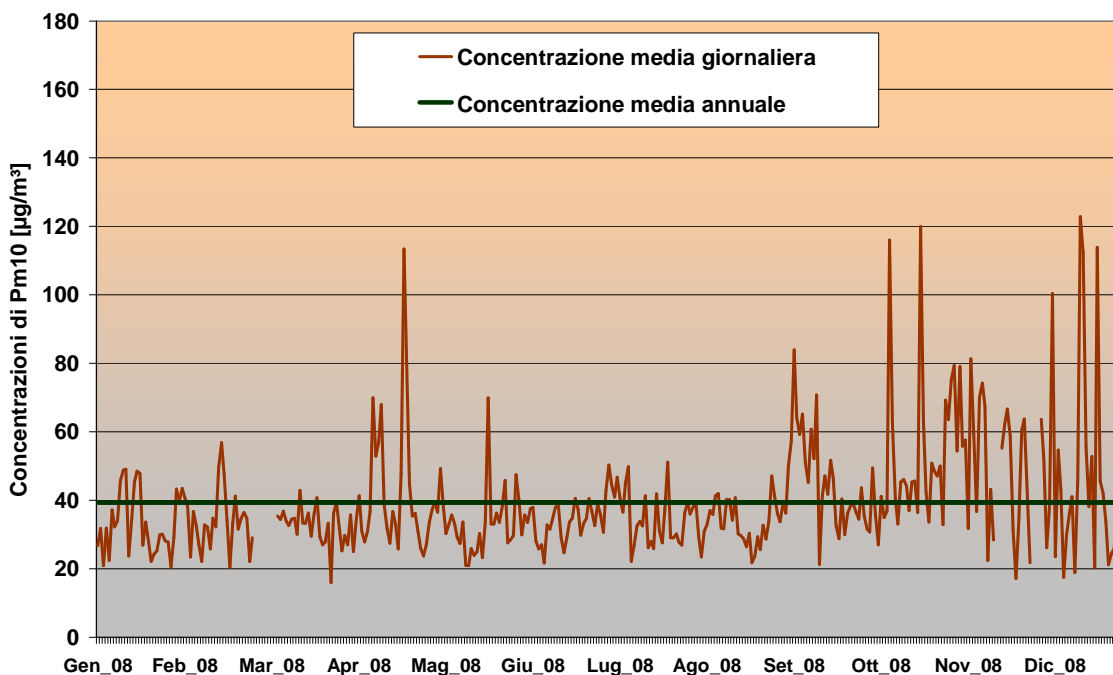
Centralina	Anno
Archimede (MESSINA)	2006
Archimede (MESSINA)	2008
Archimede (MESSINA)	2009
Bocchetta (MESSINA)	2009
Minissale (MESSINA)	2006
Minissale (MESSINA)	2009
Caronte (MESSINA)	2006
Caronte (MESSINA)	2008
Caronte (MESSINA)	2009

		Ponte sullo Stretto di Messina PROGETTO DEFINITIVO		
SCHEDATURA DATI METEOROLOGICI E DI INQUINAMENTO ATMOSFERICO		Codice documento AMV0544_F0.doc	Rev F0	Data 31/05/2012
Alternative ai siti di deposito				

Archimede (MESSINA) – 2006

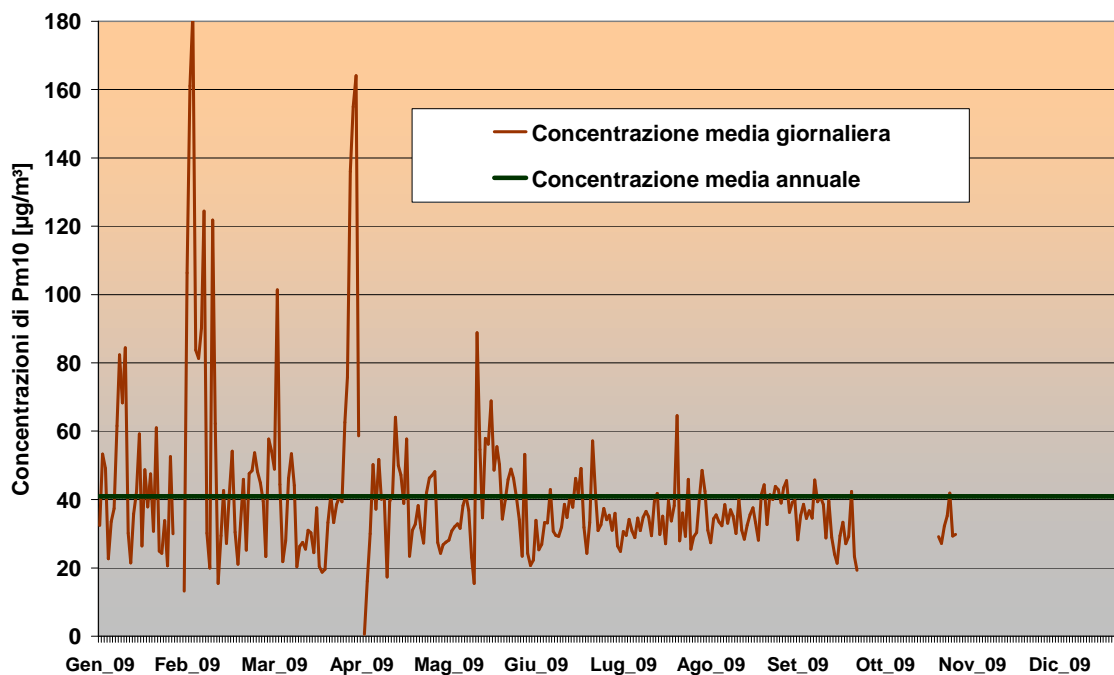


Archimede (MESSINA) – 2008

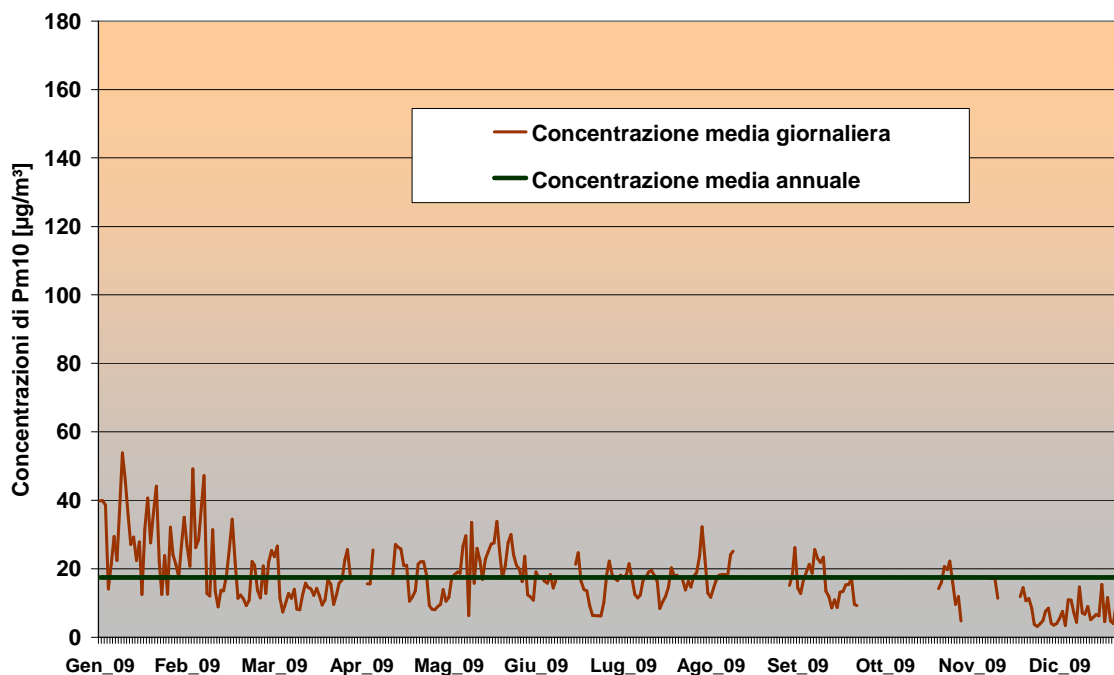


		Ponte sullo Stretto di Messina PROGETTO DEFINITIVO		
SCHEDATURA DATI METEOROLOGICI E DI INQUINAMENTO ATMOSFERICO		Codice documento AMV0544_F0.doc	Rev F0	Data 31/05/2012
Alternative ai siti di deposito				

Archimede (MESSINA) – 2009

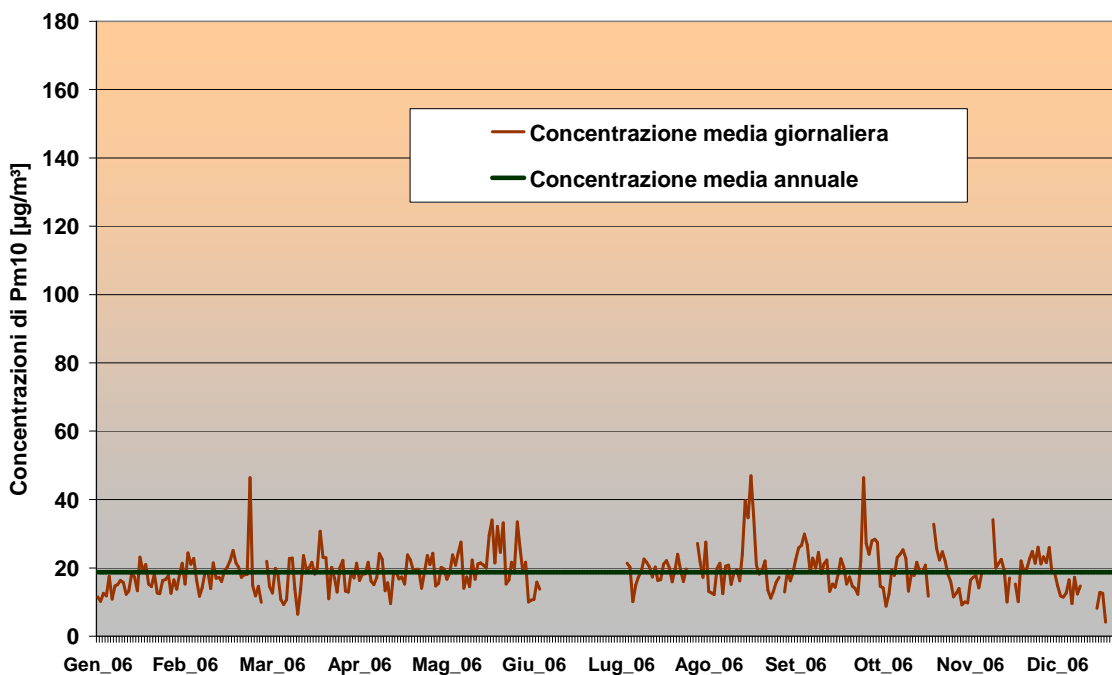


Bocchetta (MESSINA) – 2009

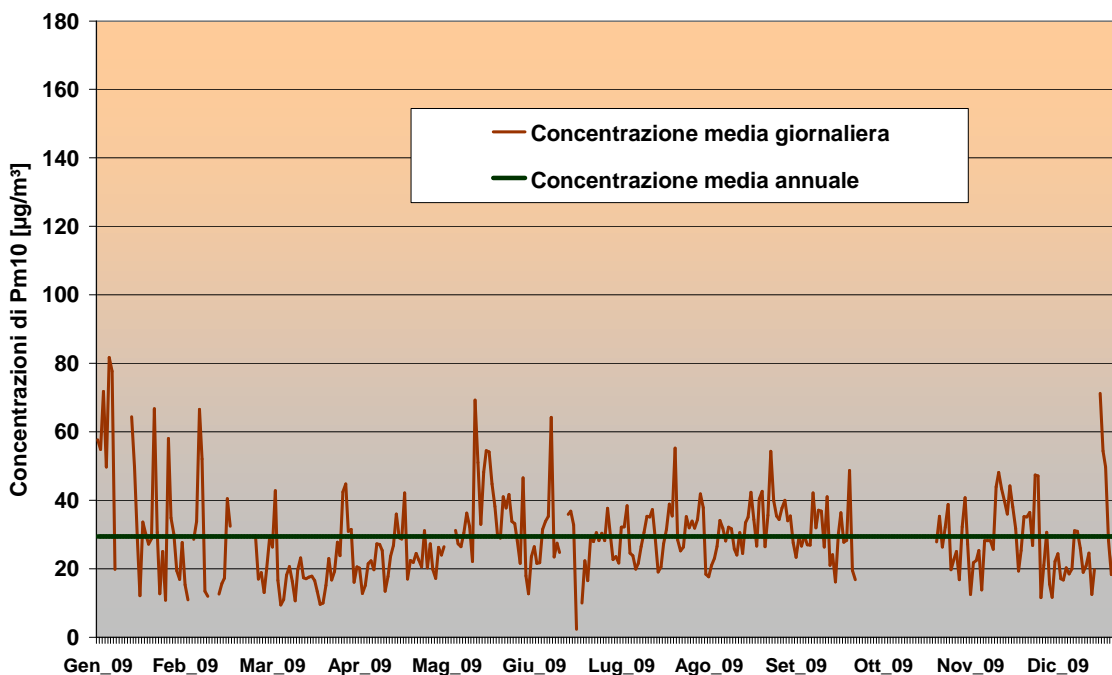


		Ponte sullo Stretto di Messina PROGETTO DEFINITIVO		
SCHEDATURA DATI METEOROLOGICI E DI INQUINAMENTO ATMOSFERICO		Codice documento AMV0544_F0.doc	Rev F0	Data 31/05/2012
Alternative ai siti di deposito				

Minissale (MESSINA) – 2006

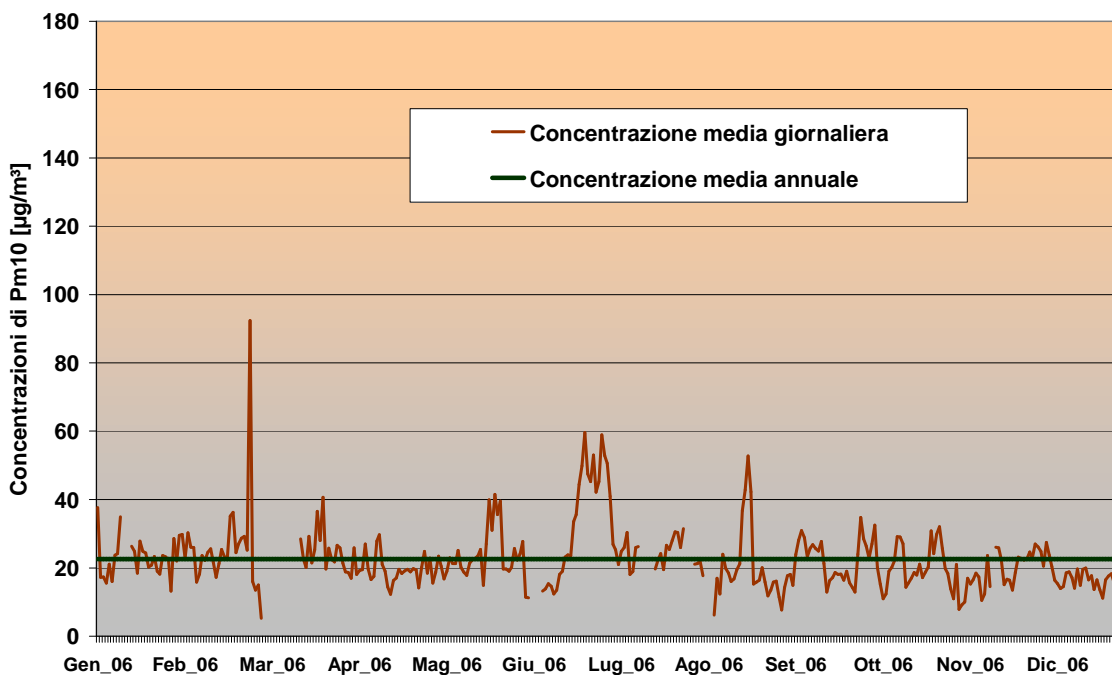


Minissale (MESSINA) – 2009

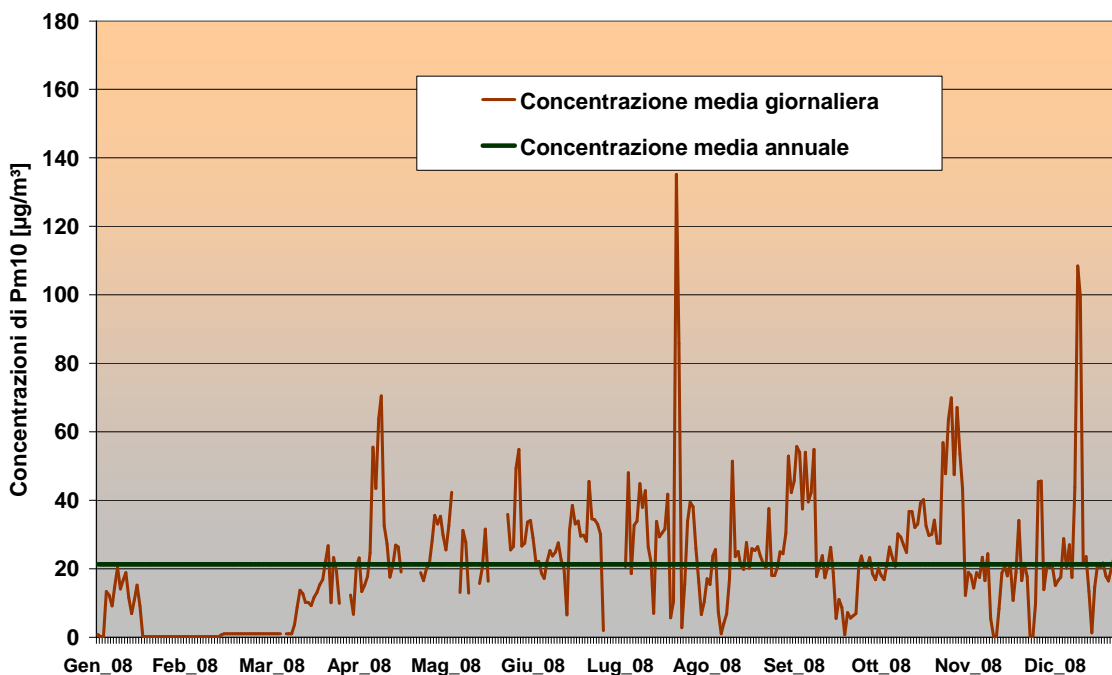


 Stretto di Messina		Ponte sullo Stretto di Messina PROGETTO DEFINITIVO		
SCHEDATURA DATI METEOROLOGICI E DI INQUINAMENTO ATMOSFERICO		<i>Codice documento</i> AMV0544_F0.doc		<i>Rev</i> F0
		Alternative ai siti di deposito		
				<i>Data</i> 31/05/2012

Caronte (MESSINA) – 2006

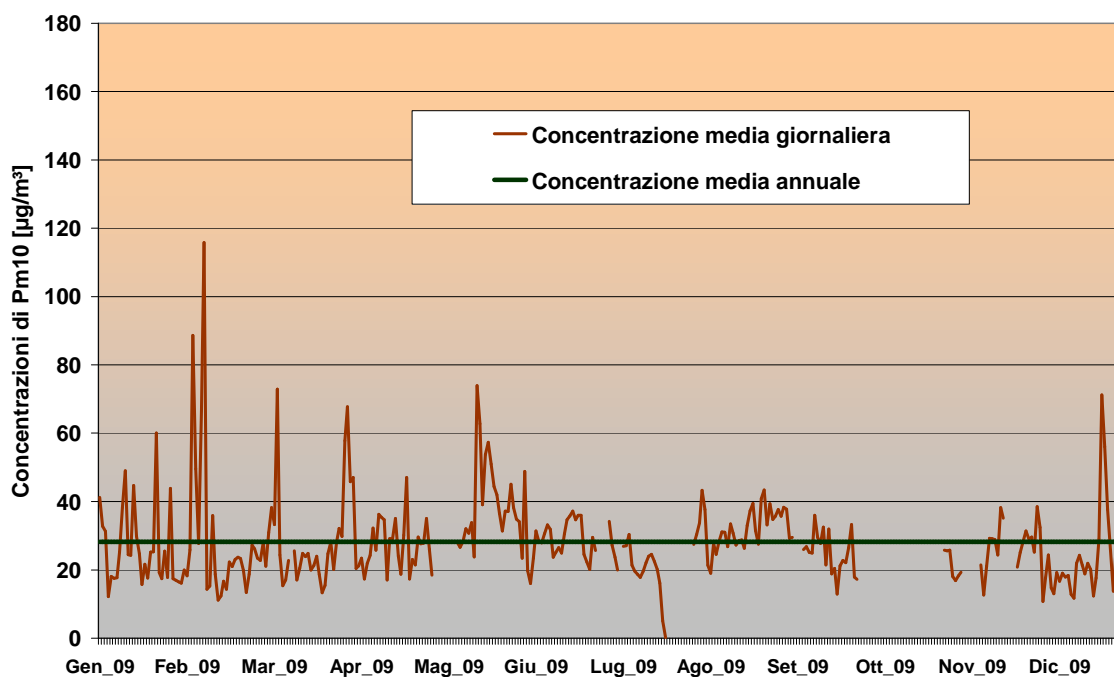


Caronte (MESSINA) – 2008



		Ponte sullo Stretto di Messina PROGETTO DEFINITIVO							
SCHEDATURA DATI METEOROLOGICI E DI INQUINAMENTO ATMOSFERICO		<i>Alternative ai siti di deposito</i> <table border="1"> <thead> <tr> <th data-bbox="807 300 1254 331">Codice documento</th> <th data-bbox="1254 300 1331 331">Rev</th> <th data-bbox="1331 300 1437 331">Data</th> </tr> </thead> <tbody> <tr> <td data-bbox="807 338 1254 367">AMV0544_F0.doc</td> <td data-bbox="1254 338 1331 367">F0</td> <td data-bbox="1331 338 1437 367">31/05/2012</td> </tr> </tbody> </table>		Codice documento	Rev	Data	AMV0544_F0.doc	F0	31/05/2012
Codice documento	Rev	Data							
AMV0544_F0.doc	F0	31/05/2012							

Caronte (MESSINA) – 2009



		<p align="center">Ponte sullo Stretto di Messina PROGETTO DEFINITIVO Alternative ai siti di deposito</p>	
<p align="center">SCHEDATURA DATI METEOROLOGICI E DI INQUINAMENTO ATMOSFERICO</p>	<p><i>Codice documento</i> AMV0544_F0.doc</p>	<p><i>Rev</i> F0</p>	<p><i>Data</i> 31/05/2012</p>

Inquinante

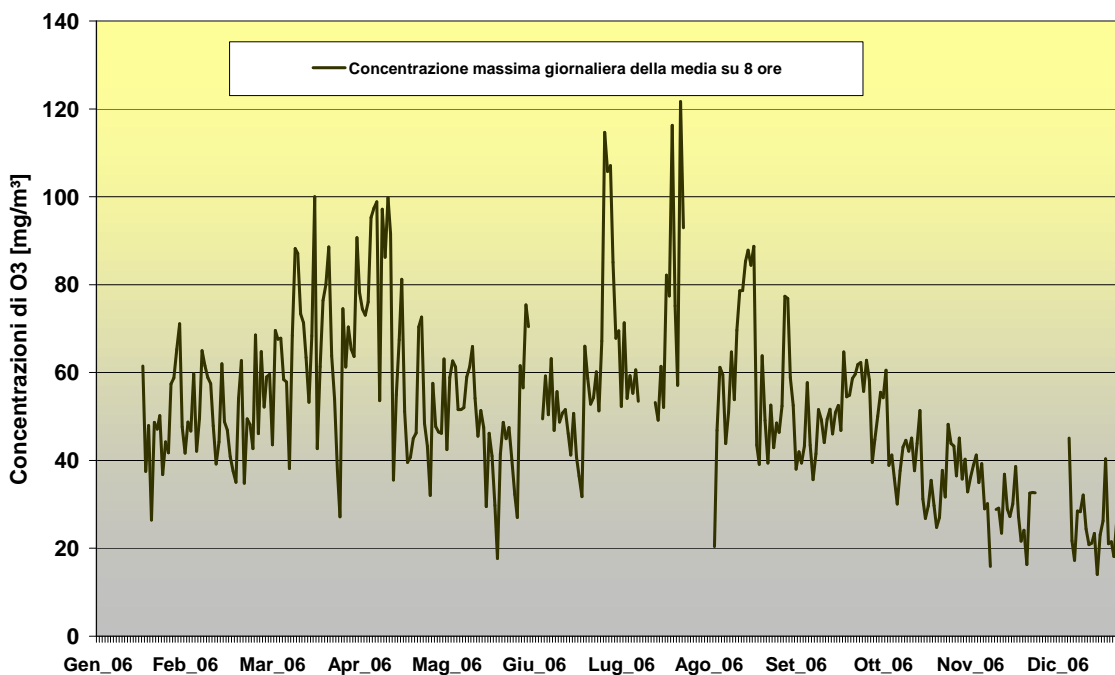
Ozono (O₃)

Dati disponibili

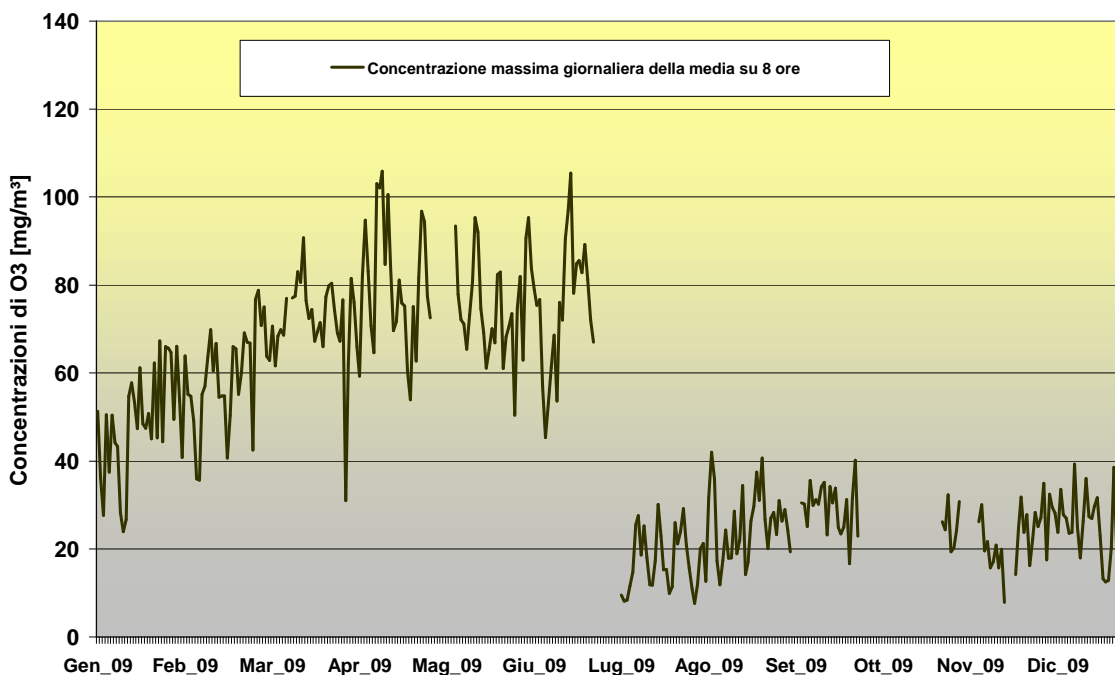
Centralina	Anno
Caronte (MESSINA)	2006
Caronte (MESSINA)	2009

		Ponte sullo Stretto di Messina PROGETTO DEFINITIVO	
SCHEDATURA DATI METEOROLOGICI E DI INQUINAMENTO ATMOSFERICO		Codice documento AMV0544_F0.doc	Rev F0 Data 31/05/2012
Alternative ai siti di deposito			

Caronte (MESSINA) – 2006



Caronte (MESSINA) – 2009



		<p align="center">Ponte sullo Stretto di Messina PROGETTO DEFINITIVO Alternative ai siti di deposito</p>	
<p align="center">SCHEDATURA DATI METEOROLOGICI E DI INQUINAMENTO ATMOSFERICO</p>	<p><i>Codice documento</i> AMV0544_F0.doc</p>	<p><i>Rev</i> F0</p>	<p><i>Data</i> 31/05/2012</p>

Inquinante

BIOSSIDO DI AZOTO (NO_x)

Dati disponibili

Centralina	Anno
Piazza Castello (REGGIO CALABRIA)	2009

Piazza Castello (REGGIO CALABRIA) – 2009

