

TIPOLOGIA DELL'IMPATTO AMBIENTALE

Fase di COSTRUZIONE

- EOC 01 - Alterazione dell'assetto vegetazionale - paesaggistico con dirette ripercussioni sulla tenuta dell'ecosistema
- EOC 02 - Interruzione di corridoi ecologici
- EOC 03 - Modifiche morfologiche con semplificazione della matrice ambientale

Fase di ESERCIZIO

- EOE 01 - Erosione della componente naturale con progressiva riduzione delle capacità di inasodamento e/o permanenza della fauna selvatica
- EOE 02 - Effetto - barriera e frammentazione degli ecosistemi

Area di Impatto 5
Depositi di recupero ombeliche SR4, SR45, SR46, SR47, SR49, SR10, SR451, SR452, P-SM8

Sensibilità: ALTA	Sensibilità: ALTA
Fasi tipologiche Livello 1	Fasi tipologiche Livello 1
C EOC 1	E EOE 1
C EOC 2	E EOE 2
C EOC 3	

Area di Impatto 7
Depositi SR4, EOC - PZS (Mori Pasticceria)

Sensibilità: ALTA	Sensibilità: ALTA
Fasi tipologiche Livello 1	Fasi tipologiche Livello 1
C EOC 1	E EOE 1
C EOC 2	E EOE 2
C EOC 3	

Area di Impatto 8
Depositi SR456 e SR458

Sensibilità: ALTA	Sensibilità: ALTA
Fasi tipologiche Livello 1	Fasi tipologiche Livello 1
C EOC 1	E EOE 1
C EOC 2	E EOE 2
C EOC 3	

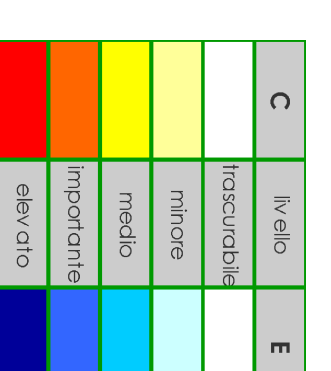
Area di Impatto 9
Centri operativi SR7, SR8 e cantiere logistico SR8

Sensibilità: MEDIA	Sensibilità: MEDIA
Fasi tipologiche Livello 1	Fasi tipologiche Livello 1
C EOC 1	E EOE 1
C EOC 2	E EOE 2
C EOC 3	

DEFINIZIONE DELL'AMBITO DI IMPATTO AMBIENTALE

- SF1 - Cantiere operativo SR1 - Fondazione Torre, Vado di accesso e visibilità di servizio - Vado Pantano
- SF2 - Cantiere operativo SR1 - visibilità di servizio P-SN1 e parte di V-SE1, Rilevato RP01-04, Trincea T01, Blocco di ancoraggio, Imbocco (Mori Pasticceria) T02, Area di servizio lato ponte (Mori Pasticceria) T02, Area di servizio lato ponte
- S1 - Galleria Foro Superiore, Cantiere operativo SR2
- S2 - Imbocchi lato ME G. Foro Superiore - Trincea (grondaia) T03 - Vado Curcuraci - Rampe in rilevato 1-6 - Imbocchi lato Ponte galieno Bienna II, Vado di servizio
- S3 - Imbocchi lato ME G. Bienna II - Vado Pace - Imbocchi lato Ponte G. Le Fosse, Cantiere operativo SR4 - Imbocchi lato Ponte G. Le Fosse, Cavalcavia e Vado servizio Amunzio - Imbocchi lato Ponte G. Serazzo - Cantiere servizio SR5 - Cantiere logistico SR4 - visibilità di servizio V-SE1 V-SE3
- F1 - V-SE3
- F2 - Cantiere logistico SR2 Magliola, Posto di manutenzione SIMA
- Gartificiale S. Agata - Imbocco G.S. Agata lato ME - Trincea T02 - Imbocco lato Ponte G.S. Cella - G. artificiale S. Cella
- F3 - Cantiere operativo Amunzio SR2 e visibilità di servizio V-SE6 - Stazione Amunzio
- F4 - Stazione V-SE6 - Cantiere operativo Europa SR3 e visibilità di servizio V-SE6
- F5 - Galleria artificiale S. Cella - Imbocco lato Me G. S. Cella
- 3 - SR45 Pace
- 4 - Cavo di servizio SC3 e impianto di betonaggio - Visibilità di servizio SR45 Pace
- 5 - Siti di deposito e recupero ambientale SR4, SR45, SR46, SR47, SR49, SR10 - Discariche di rifiuti speciali non pericolosi SR451 e SR452
- 6p - Visibilità di servizio SR451 e SR452
- 7 - Siti di deposito e recupero ambientale SR451 e SR452
- 8 - Siti di deposito e recupero ambientale SR451 e SR452
- 9 - Siti di deposito e recupero ambientale SR451 e SR452

LIVELLO DELL'IMPATTO AMBIENTALE



NOTE GENERALI

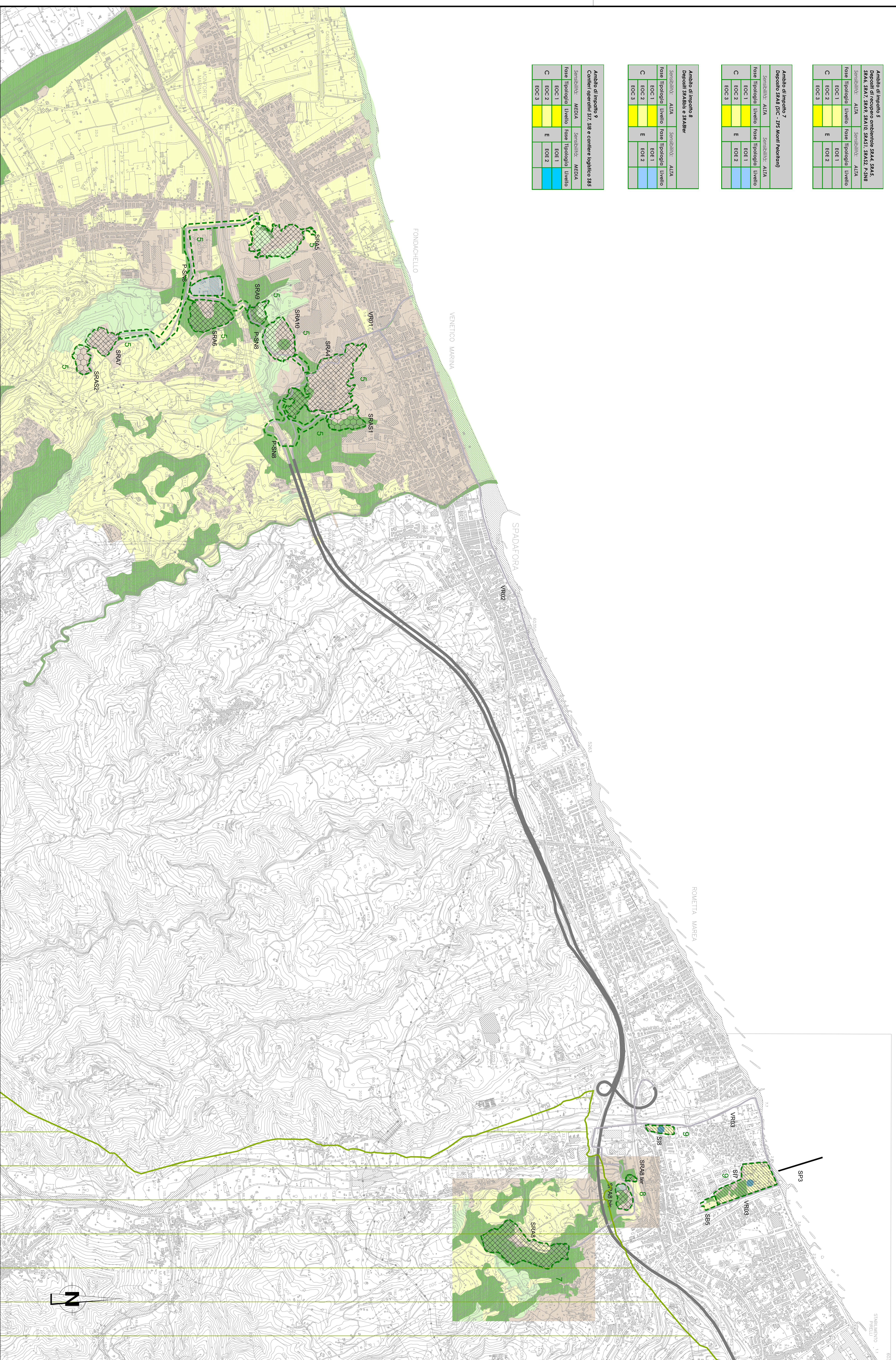
PROGETTO STRADALE E FERROVIARIO:

- Trincea
- Rilevato
- Viadotto
- Imbocco galleria
- Galleria artificiale
- Galleria naturale
- Area di sosta
- SA-RC
- SA-RC tratto in galleria
- Progetto ferroviario
- Fascio Bienna
- SITI DI RECUPERO AMBIENTALE: SR4, SR45, SR46, SR47, SR49, SR10, SR451, SR452, SR456, SR458, SR459, SR460, SR461, SR462, SR463, SR464, SR465, SR466, SR467, SR468, SR469, SR470, SR471, SR472, SR473, SR474, SR475, SR476, SR477, SR478, SR479, SR480, SR481, SR482, SR483, SR484, SR485, SR486, SR487, SR488, SR489, SR490, SR491, SR492, SR493, SR494, SR495, SR496, SR497, SR498, SR499, SR500, SR501, SR502, SR503, SR504, SR505, SR506, SR507, SR508, SR509, SR510, SR511, SR512, SR513, SR514, SR515, SR516, SR517, SR518, SR519, SR520, SR521, SR522, SR523, SR524, SR525, SR526, SR527, SR528, SR529, SR530, SR531, SR532, SR533, SR534, SR535, SR536, SR537, SR538, SR539, SR540, SR541, SR542, SR543, SR544, SR545, SR546, SR547, SR548, SR549, SR550, SR551, SR552, SR553, SR554, SR555, SR556, SR557, SR558, SR559, SR560, SR561, SR562, SR563, SR564, SR565, SR566, SR567, SR568, SR569, SR570, SR571, SR572, SR573, SR574, SR575, SR576, SR577, SR578, SR579, SR580, SR581, SR582, SR583, SR584, SR585, SR586, SR587, SR588, SR589, SR590, SR591, SR592, SR593, SR594, SR595, SR596, SR597, SR598, SR599, SR600, SR601, SR602, SR603, SR604, SR605, SR606, SR607, SR608, SR609, SR610, SR611, SR612, SR613, SR614, SR615, SR616, SR617, SR618, SR619, SR620, SR621, SR622, SR623, SR624, SR625, SR626, SR627, SR628, SR629, SR630, SR631, SR632, SR633, SR634, SR635, SR636, SR637, SR638, SR639, SR640, SR641, SR642, SR643, SR644, SR645, SR646, SR647, SR648, SR649, SR650, SR651, SR652, SR653, SR654, SR655, SR656, SR657, SR658, SR659, SR660, SR661, SR662, SR663, SR664, SR665, SR666, SR667, SR668, SR669, SR670, SR671, SR672, SR673, SR674, SR675, SR676, SR677, SR678, SR679, SR680, SR681, SR682, SR683, SR684, SR685, SR686, SR687, SR688, SR689, SR690, SR691, SR692, SR693, SR694, SR695, SR696, SR697, SR698, SR699, SR700, SR701, SR702, SR703, SR704, SR705, SR706, SR707, SR708, SR709, SR710, SR711, SR712, SR713, SR714, SR715, SR716, SR717, SR718, SR719, SR720, SR721, SR722, SR723, SR724, SR725, SR726, SR727, SR728, SR729, SR730, SR731, SR732, SR733, SR734, SR735, SR736, SR737, SR738, SR739, SR740, SR741, SR742, SR743, SR744, SR745, SR746, SR747, SR748, SR749, SR750, SR751, SR752, SR753, SR754, SR755, SR756, SR757, SR758, SR759, SR760, SR761, SR762, SR763, SR764, SR765, SR766, SR767, SR768, SR769, SR770, SR771, SR772, SR773, SR774, SR775, SR776, SR777, SR778, SR779, SR780, SR781, SR782, SR783, SR784, SR785, SR786, SR787, SR788, SR789, SR790, SR791, SR792, SR793, SR794, SR795, SR796, SR797, SR798, SR799, SR800, SR801, SR802, SR803, SR804, SR805, SR806, SR807, SR808, SR809, SR810, SR811, SR812, SR813, SR814, SR815, SR816, SR817, SR818, SR819, SR820, SR821, SR822, SR823, SR824, SR825, SR826, SR827, SR828, SR829, SR830, SR831, SR832, SR833, SR834, SR835, SR836, SR837, SR838, SR839, SR840, SR841, SR842, SR843, SR844, SR845, SR846, SR847, SR848, SR849, SR850, SR851, SR852, SR853, SR854, SR855, SR856, SR857, SR858, SR859, SR860, SR861, SR862, SR863, SR864, SR865, SR866, SR867, SR868, SR869, SR870, SR871, SR872, SR873, SR874, SR875, SR876, SR877, SR878, SR879, SR880, SR881, SR882, SR883, SR884, SR885, SR886, SR887, SR888, SR889, SR890, SR891, SR892, SR893, SR894, SR895, SR896, SR897, SR898, SR899, SR900, SR901, SR902, SR903, SR904, SR905, SR906, SR907, SR908, SR909, SR910, SR911, SR912, SR913, SR914, SR915, SR916, SR917, SR918, SR919, SR920, SR921, SR922, SR923, SR924, SR925, SR926, SR927, SR928, SR929, SR930, SR931, SR932, SR933, SR934, SR935, SR936, SR937, SR938, SR939, SR940, SR941, SR942, SR943, SR944, SR945, SR946, SR947, SR948, SR949, SR950, SR951, SR952, SR953, SR954, SR955, SR956, SR957, SR958, SR959, SR960, SR961, SR962, SR963, SR964, SR965, SR966, SR967, SR968, SR969, SR970, SR971, SR972, SR973, SR974, SR975, SR976, SR977, SR978, SR979, SR980, SR981, SR982, SR983, SR984, SR985, SR986, SR987, SR988, SR989, SR990, SR991, SR992, SR993, SR994, SR995, SR996, SR997, SR998, SR999, SR1000

CLASSI DI SENSIBILITÀ

- SENSIBILITÀ BASSA, ecosistemi d'interesse conservazionistico
- SENSIBILITÀ ALTA, ecosistemi naturali con specie d'interesse conservazionistico
- SENSIBILITÀ MEDIA, ecosistemi seminaturali con presenza di specie d'interesse conservazionistico
- SENSIBILITÀ MOLTO ALTA, ecosistemi naturali ricchi di specie d'interesse conservazionistico

QUADRO DI UNIONE



Stretto di Messina

di Messina

EUROLINK S.C.p.A.

PONTE SULLO STRETTO DI MESSINA

PROGETTO DEFINITIVO

ALTERNATIVE AI SITI DI DEPOSITO

EUROLINK S.C.p.A.

COOPERATIVA VIBRATORI E CEMENTISTI - C.M.C. di Ravenna Soc. Coop. a.r.l.

IBH/M/M/M/M - VIBRATORI E CEMENTISTI - C.M.C. di Ravenna Soc. Coop. a.r.l.

A.C.I. S.C.P.A. - CONSORZIO STRABE

STUDIO DI IMPATTO AMBIENTALE

QUADRO DI RIFERIMENTO AMBIENTALE - ECOSISTEMI

SICILIA - CARTA DI SINTESI DEGLI IMPATTI - FO 4/4

AMV0806_F0

PROGETTO STRADALE E FERROVIARIO:

- Trincea
- Rilevato
- Viadotto
- Imbocco galleria
- Galleria artificiale
- Galleria naturale
- Area di sosta
- SA-RC
- SA-RC tratto in galleria
- Progetto ferroviario
- Fascio Bienna
- SITI DI RECUPERO AMBIENTALE: SR4, SR45, SR46, SR47, SR49, SR10, SR451, SR452, SR456, SR458, SR459, SR460, SR461, SR462, SR463, SR464, SR465, SR466, SR467, SR468, SR469, SR470, SR471, SR472, SR473, SR474, SR475, SR476, SR477, SR478, SR479, SR480, SR481, SR482, SR483, SR484, SR485, SR486, SR487, SR488, SR489, SR490, SR491, SR492, SR493, SR494, SR495, SR496, SR497, SR498, SR499, SR500, SR501, SR502, SR503, SR504, SR505, SR506, SR507, SR508, SR509, SR510, SR511, SR512, SR513, SR514, SR515, SR516, SR517, SR518, SR519, SR520, SR521, SR522, SR523, SR524, SR525, SR526, SR527, SR528, SR529, SR530, SR531, SR532, SR533, SR534, SR535, SR536, SR537, SR538, SR539, SR540, SR541, SR542, SR543, SR544, SR545, SR546, SR547, SR548, SR549, SR550, SR551, SR552, SR553, SR554, SR555, SR556, SR557, SR558, SR559, SR560, SR561, SR562, SR563, SR564, SR565, SR566, SR567, SR568, SR569, SR570, SR571, SR572, SR573, SR574, SR575, SR576, SR577, SR578, SR579, SR580, SR581, SR582, SR583, SR584, SR585, SR586, SR587, SR588, SR589, SR590, SR591, SR592, SR593, SR594, SR595, SR596, SR597, SR598, SR599, SR600, SR601, SR602, SR603, SR604, SR605, SR606, SR607, SR608, SR609, SR610, SR611, SR612, SR613, SR614, SR615, SR616, SR617, SR618, SR619, SR620, SR621, SR622, SR623, SR624, SR625, SR626, SR627, SR628, SR629, SR630, SR631, SR632, SR633, SR634, SR635, SR636, SR637, SR638, SR639, SR640, SR641, SR642, SR643, SR644, SR645, SR646, SR647, SR648, SR649, SR650, SR651, SR652, SR653, SR654, SR655, SR656, SR657, SR658, SR659, SR660, SR661, SR662, SR663, SR664, SR665, SR666, SR667, SR668, SR669, SR670, SR671, SR672, SR673, SR674, SR675, SR676, SR677, SR678, SR679, SR680, SR681, SR682, SR683, SR684, SR685, SR686, SR687, SR688, SR689, SR690, SR691, SR692, SR693, SR694, SR695, SR696, SR697, SR698, SR699, SR700, SR701, SR702, SR703, SR704, SR705, SR706, SR707, SR708, SR709, SR710, SR711, SR712, SR713, SR714, SR715, SR716, SR717, SR718, SR719, SR720, SR721, SR722, SR723, SR724, SR725, SR726, SR727, SR728, SR729, SR730, SR731, SR732, SR733, SR734, SR735, SR736, SR737, SR738, SR739, SR740, SR741, SR742, SR743, SR744, SR745, SR746, SR747, SR748, SR749, SR750, SR751, SR752, SR753, SR754, SR755, SR756, SR757, SR758, SR759, SR760, SR761, SR762, SR763, SR764, SR765, SR766, SR767, SR768, SR769, SR770, SR771, SR772, SR773, SR774, SR775, SR776, SR777, SR778, SR779, SR780, SR781, SR782, SR783, SR784, SR785, SR786, SR787, SR788, SR789, SR790, SR791, SR792, SR793, SR794, SR795, SR796, SR797, SR798, SR799, SR800, SR801, SR802, SR803, SR804, SR805, SR806, SR807, SR808, SR809, SR810, SR811, SR812, SR813, SR814, SR815, SR816, SR817, SR818, SR819, SR820, SR821, SR822, SR823, SR824, SR825, SR826, SR827, SR828, SR829, SR830, SR831, SR832, SR833, SR834, SR835, SR836, SR837, SR838, SR839, SR840, SR841, SR842, SR843, SR844, SR845, SR846, SR847, SR848, SR849, SR850, SR851, SR852, SR853, SR854, SR855, SR856, SR857, SR858, SR859, SR860, SR861, SR862, SR863, SR864, SR865, SR866, SR867, SR868, SR869, SR870, SR871, SR872, SR873, SR874, SR875, SR876, SR877, SR878, SR879, SR880, SR881, SR882, SR883, SR884, SR885, SR886, SR887, SR888, SR889, SR890, SR891, SR892, SR893, SR894, SR895, SR896, SR897, SR898, SR899, SR900, SR901, SR902, SR903, SR904, SR905, SR906, SR907, SR908, SR909, SR910, SR911, SR912, SR913, SR914, SR915, SR916, SR917, SR918, SR919, SR920, SR921, SR922, SR923, SR924, SR925, SR926, SR927, SR928, SR929, SR930, SR931, SR932, SR933, SR934, SR935, SR936, SR937, SR938, SR939, SR940, SR941, SR942, SR943, SR944, SR945, SR946, SR947, SR948, SR949, SR950, SR951, SR952, SR953, SR954, SR955, SR956, SR957, SR958, SR959, SR960, SR961, SR962, SR963, SR964, SR965, SR966, SR967, SR968, SR969, SR970, SR971, SR972, SR973, SR974, SR975, SR976, SR977, SR978, SR979, SR980, SR981, SR982, SR983, SR984, SR985, SR986, SR987, SR988, SR989, SR990, SR991, SR992, SR993, SR994, SR995, SR996, SR997, SR998, SR999, SR1000