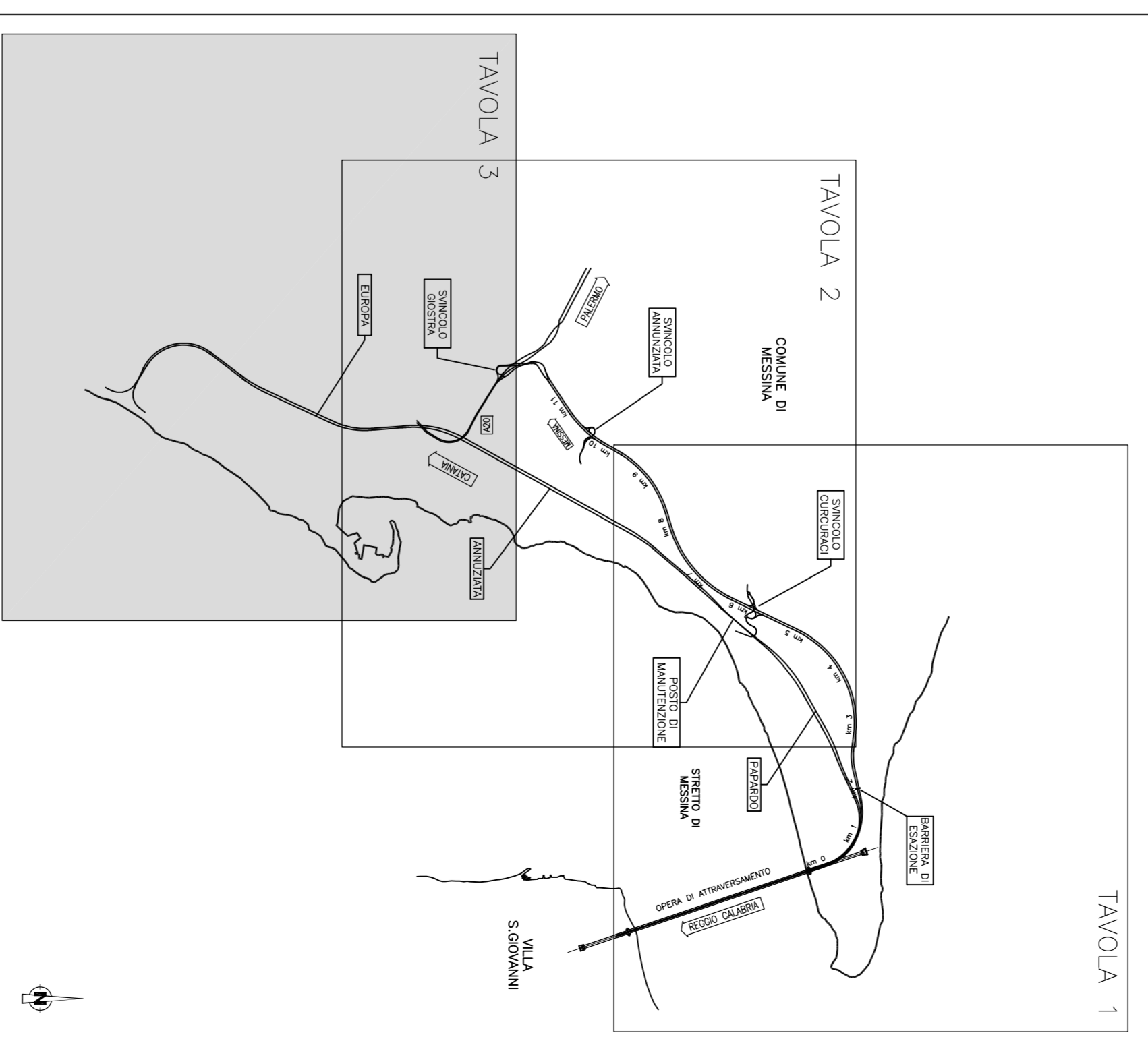


NOTE GENERALI

- PROGETTO STRADALE E FERROVIARIO:**
- Trinceo
 - Trinceo profondo
 - Rilevato
 - Viadotto
 - Imbocco galleria
 - Galleria artificiale
 - Galleria naturale
 - Stazioni metropolitana
 - Posto di manutenzione
 - Area di stazione
- CANTIERIZZAZIONE:**
- SITI DI DEPOSITO E RECUPERO
SCALF. SP1, SP2, SP3, SP4, SP5, SP6, SP7, SP8, SP9, SP10, SP11, SP12, SP13, SP14, SP15, SP16, SP17, SP18, SP19, SP20, SP21, SP22, SP23, SP24, SP25, SP26, SP27, SP28, SP29, SP30, SP31, SP32, SP33, SP34, SP35, SP36, SP37, SP38, SP39, SP40, SP41, SP42, SP43, SP44, SP45, SP46, SP47, SP48, SP49, SP50, SP51, SP52, SP53, SP54, SP55, SP56, SP57, SP58, SP59, SP60, SP61, SP62, SP63, SP64, SP65, SP66, SP67, SP68, SP69, SP70, SP71, SP72, SP73, SP74, SP75, SP76, SP77, SP78, SP79, SP80, SP81, SP82, SP83, SP84, SP85, SP86, SP87, SP88, SP89, SP90, SP91, SP92, SP93, SP94, SP95, SP96, SP97, SP98, SP99, SP100, SP101, SP102, SP103, SP104, SP105, SP106, SP107, SP108, SP109, SP110, SP111, SP112, SP113, SP114, SP115, SP116, SP117, SP118, SP119, SP120, SP121, SP122, SP123, SP124, SP125, SP126, SP127, SP128, SP129, SP130, SP131, SP132, SP133, SP134, SP135, SP136, SP137, SP138, SP139, SP140, SP141, SP142, SP143, SP144, SP145, SP146, SP147, SP148, SP149, SP150, SP151, SP152, SP153, SP154, SP155, SP156, SP157, SP158, SP159, SP160, SP161, SP162, SP163, SP164, SP165, SP166, SP167, SP168, SP169, SP170, SP171, SP172, SP173, SP174, SP175, SP176, SP177, SP178, SP179, SP180, SP181, SP182, SP183, SP184, SP185, SP186, SP187, SP188, SP189, SP190, SP191, SP192, SP193, SP194, SP195, SP196, SP197, SP198, SP199, SP200, SP201, SP202, SP203, SP204, SP205, SP206, SP207, SP208, SP209, SP210, SP211, SP212, SP213, SP214, SP215, SP216, SP217, SP218, SP219, SP220, SP221, SP222, SP223, SP224, SP225, SP226, SP227, SP228, SP229, SP230, SP231, SP232, SP233, SP234, SP235, SP236, SP237, SP238, SP239, SP240, SP241, SP242, SP243, SP244, SP245, SP246, SP247, SP248, SP249, SP250, SP251, SP252, SP253, SP254, SP255, SP256, SP257, SP258, SP259, SP260, SP261, SP262, SP263, SP264, SP265, SP266, SP267, SP268, SP269, SP270, SP271, SP272, SP273, SP274, SP275, SP276, SP277, SP278, SP279, SP280, SP281, SP282, SP283, SP284, SP285, SP286, SP287, SP288, SP289, SP290, SP291, SP292, SP293, SP294, SP295, SP296, SP297, SP298, SP299, SP300, SP301, SP302, SP303, SP304, SP305, SP306, SP307, SP308, SP309, SP310, SP311, SP312, SP313, SP314, SP315, SP316, SP317, SP318, SP319, SP320, SP321, SP322, SP323, SP324, SP325, SP326, SP327, SP328, SP329, SP330, SP331, SP332, SP333, SP334, SP335, SP336, SP337, SP338, SP339, SP340, SP341, SP342, SP343, SP344, SP345, SP346, SP347, SP348, SP349, SP350, SP351, SP352, SP353, SP354, SP355, SP356, SP357, SP358, SP359, SP360, SP361, SP362, SP363, SP364, SP365, SP366, SP367, SP368, SP369, SP370, SP371, SP372, SP373, SP374, SP375, SP376, SP377, SP378, SP379, SP380, SP381, SP382, SP383, SP384, SP385, SP386, SP387, SP388, SP389, SP390, SP391, SP392, SP393, SP394, SP395, SP396, SP397, SP398, SP399, SP400, SP401, SP402, SP403, SP404, SP405, SP406, SP407, SP408, SP409, SP410, SP411, SP412, SP413, SP414, SP415, SP416, SP417, SP418, SP419, SP420, SP421, SP422, SP423, SP424, SP425, SP426, SP427, SP428, SP429, SP430, SP431, SP432, SP433, SP434, SP435, SP436, SP437, SP438, SP439, SP440, SP441, SP442, SP443, SP444, SP445, SP446, SP447, SP448, SP449, SP450, SP451, SP452, SP453, SP454, SP455, SP456, SP457, SP458, SP459, SP460, SP461, SP462, SP463, SP464, SP465, SP466, SP467, SP468, SP469, SP470, SP471, SP472, SP473, SP474, SP475, SP476, SP477, SP478, SP479, SP480, SP481, SP482, SP483, SP484, SP485, SP486, SP487, SP488, SP489, SP490, SP491, SP492, SP493, SP494, SP495, SP496, SP497, SP498, SP499, SP500, SP501, SP502, SP503, SP504, SP505, SP506, SP507, SP508, SP509, SP510, SP511, SP512, SP513, SP514, SP515, SP516, SP517, SP518, SP519, SP520, SP521, SP522, SP523, SP524, SP525, SP526, SP527, SP528, SP529, SP530, SP531, SP532, SP533, SP534, SP535, SP536, SP537, SP538, SP539, SP540, SP541, SP542, SP543, SP544, SP545, SP546, SP547, SP548, SP549, SP550, SP551, SP552, SP553, SP554, SP555, SP556, SP557, SP558, SP559, SP560, SP561, SP562, SP563, SP564, SP565, SP566, SP567, SP568, SP569, SP570, SP571, SP572, SP573, SP574, SP575, SP576, SP577, SP578, SP579, SP580, SP581, SP582, SP583, SP584, SP585, SP586, SP587, SP588, SP589, SP590, SP591, SP592, SP593, SP594, SP595, SP596, SP597, SP598, SP599, SP600, SP601, SP602, SP603, SP604, SP605, SP606, SP607, SP608, SP609, SP610, SP611, SP612, SP613, SP614, SP615, SP616, SP617, SP618, SP619, SP620, SP621, SP622, SP623, SP624, SP625, SP626, SP627, SP628, SP629, SP630, SP631, SP632, SP633, SP634, SP635, SP636, SP637, SP638, SP639, SP640, SP641, SP642, SP643, SP644, SP645, SP646, SP647, SP648, SP649, SP650, SP651, SP652, SP653, SP654, SP655, SP656, SP657, SP658, SP659, SP660, SP661, SP662, SP663, SP664, SP665, SP666, SP667, SP668, SP669, SP670, SP671, SP672, SP673, SP674, SP675, SP676, SP677, SP678, SP679, SP680, SP681, SP682, SP683, SP684, SP685, SP686, SP687, SP688, SP689, SP690, SP691, SP692, SP693, SP694, SP695, SP696, SP697, SP698, SP699, SP700, SP701, SP702, SP703, SP704, SP705, SP706, SP707, SP708, SP709, SP710, SP711, SP712, SP713, SP714, SP715, SP716, SP717, SP718, SP719, SP720, SP721, SP722, SP723, SP724, SP725, SP726, SP727, SP728, SP729, SP730, SP731, SP732, SP733, SP734, SP735, SP736, SP737, SP738, SP739, SP740, SP741, SP742, SP743, SP744, SP745, SP746, SP747, SP748, SP749, SP750, SP751, SP752, SP753, SP754, SP755, SP756, SP757, SP758, SP759, SP760, SP761, SP762, SP763, SP764, SP765, SP766, SP767, SP768, SP769, SP770, SP771, SP772, SP773, SP774, SP775, SP776, SP777, SP778, SP779, SP780, SP781, SP782, SP783, SP784, SP785, SP786, SP787, SP788, SP789, SP790, SP791, SP792, SP793, SP794, SP795, SP796, SP797, SP798, SP799, SP800, SP801, SP802, SP803, SP804, SP805, SP806, SP807, SP808, SP809, SP810, SP811, SP812, SP813, SP814, SP815, SP816, SP817, SP818, SP819, SP820, SP821, SP822, SP823, SP824, SP825, SP826, SP827, SP828, SP829, SP830, SP831, SP832, SP833, SP834, SP835, SP836, SP837, SP838, SP839, SP840, SP841, SP842, SP843, SP844, SP845, SP846, SP847, SP848, SP849, SP850, SP851, SP852, SP853, SP854, SP855, SP856, SP857, SP858, SP859, SP860, SP861, SP862, SP863, SP864, SP865, SP866, SP867, SP868, SP869, SP870, SP871, SP872, SP873, SP874, SP875, SP876, SP877, SP878, SP879, SP880, SP881, SP882, SP883, SP884, SP885, SP886, SP887, SP888, SP889, SP890, SP891, SP892, SP893, SP894, SP895, SP896, SP897, SP898, SP899, SP900, SP901, SP902, SP903, SP904, SP905, SP906, SP907, SP908, SP909, SP910, SP911, SP912, SP913, SP914, SP915, SP916, SP917, SP918, SP919, SP920, SP921, SP922, SP923, SP924, SP925, SP926, SP927, SP928, SP929, SP930, SP931, SP932, SP933, SP934, SP935, SP936, SP937, SP938, SP939, SP940, SP941, SP942, SP943, SP944, SP945, SP946, SP947, SP948, SP949, SP950, SP951, SP952, SP953, SP954, SP955, SP956, SP957, SP958, SP959, SP960, SP961, SP962, SP963, SP964, SP965, SP966, SP967, SP968, SP969, SP970, SP971, SP972, SP973, SP974, SP975, SP976, SP977, SP978, SP979, SP980, SP981, SP982, SP983, SP984, SP985, SP986, SP987, SP988, SP989, SP990, SP991, SP992, SP993, SP994, SP995, SP996, SP997, SP998, SP999, SP1000.
- LEGENDA**
- Idoneità molto bassa: ambienti che non soddisfanno le esigenze ecologiche delle comunità faunistiche
 - Idoneità bassa: ambienti che supportano le comunità faunistiche in parte e/o in modo non stabile nel tempo
 - Idoneità media: ambienti che supportano le comunità faunistiche
 - Idoneità alta: ambienti ottimali per le comunità faunistiche

QUADRO DI UNIONE



Stretto di Messina

Coordinata per le progettazioni, realizzazione e gestione del collegamento stradale tra Sicilia e Calabria
 (legge n° 175 del 1° gennaio 1971, articolo del titolo n° 111 del 24 aprile 2002)

Eurolink

PONTE SULLO STRETTO DI MESSINA

PROGETTO DEFINITIVO

EUROLINK S.C.A.
 IMPRESA S.p.A. ITALIANA
 SOCIETA' ITALIANA PER CONDOTTE EVACUOLA S.p.A. (Materale)
 COOPERATIVA NAZIONALI E EMBLEMATI S.p.A. (Materale)
 SIKAWAYAMA - HARUDA HEAVY INDUSTRIES CO. LTD. (Materiale)
 A.C.I. S.C.P.A. - CONSENSO STABILE (Materiale)

IL PROGETTISTA Dott. Ing. G. Spagnoli S.p.A. (Materiale) Ufficio n° 20063 4710406	IL CONVENITORE GENERALE Project Manager Ing. P. Marone	STRETTO DI MESSINA Staff "Materiale" Ing. G. Fontana	STRETTO DI MESSINA Amministrativa, Disegno Dott. F. Orio
--	---	---	---

COLLEGAMENTI SICILIA

RILEVI ACCERTAMENTI E INDAGINI IN CAMPO-INDAGINI AMBIENTALI

ELEMENTI DI CARATTERE GENERALE

STUDIO SUI SUOI ECOSISTEMI

CARTA DI IDONEITÀ FAUNISTICA POSTI OPERATIVI 19 3/3

AS0104-FG

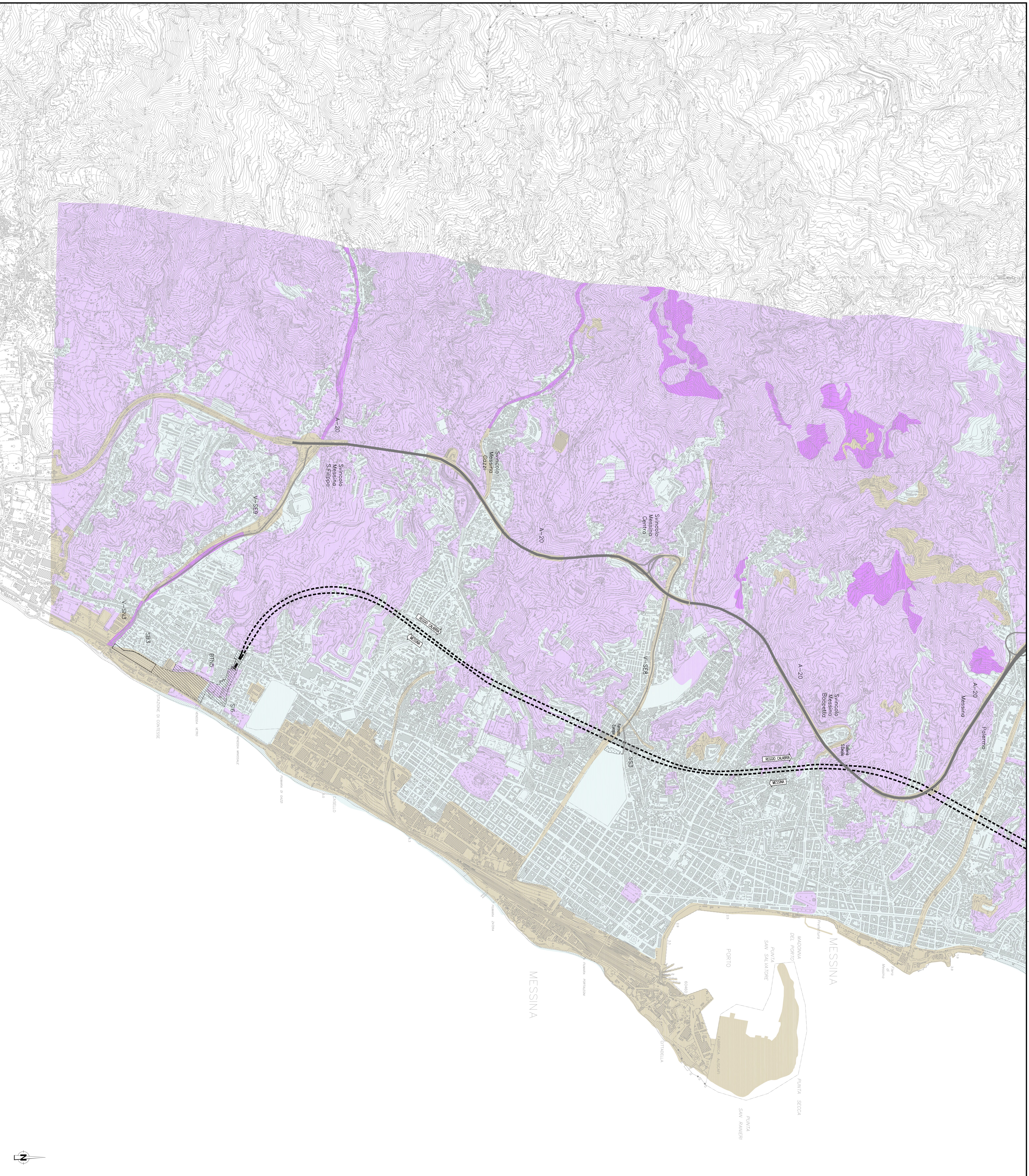
SCALE

INDICE

C I G O Z I O I A [G 4] D I S I T I Z I O E [S I] O I O [0 1] 1 8 [F 0] [0 0 0 0]

REDAZIONE MESSINA: 090 27072001
DIREZIONE MESSINA: 090 27072001
PROGETTO MESSINA: 090 27072001

NUMERO IDENTIFICATIVO ASSIQUA: FG-003



Nome del file: AS0104-FG.dwg