

PROFILO RAMO "C" DA PK. 2+099.16 m A PK.2+793.93 m

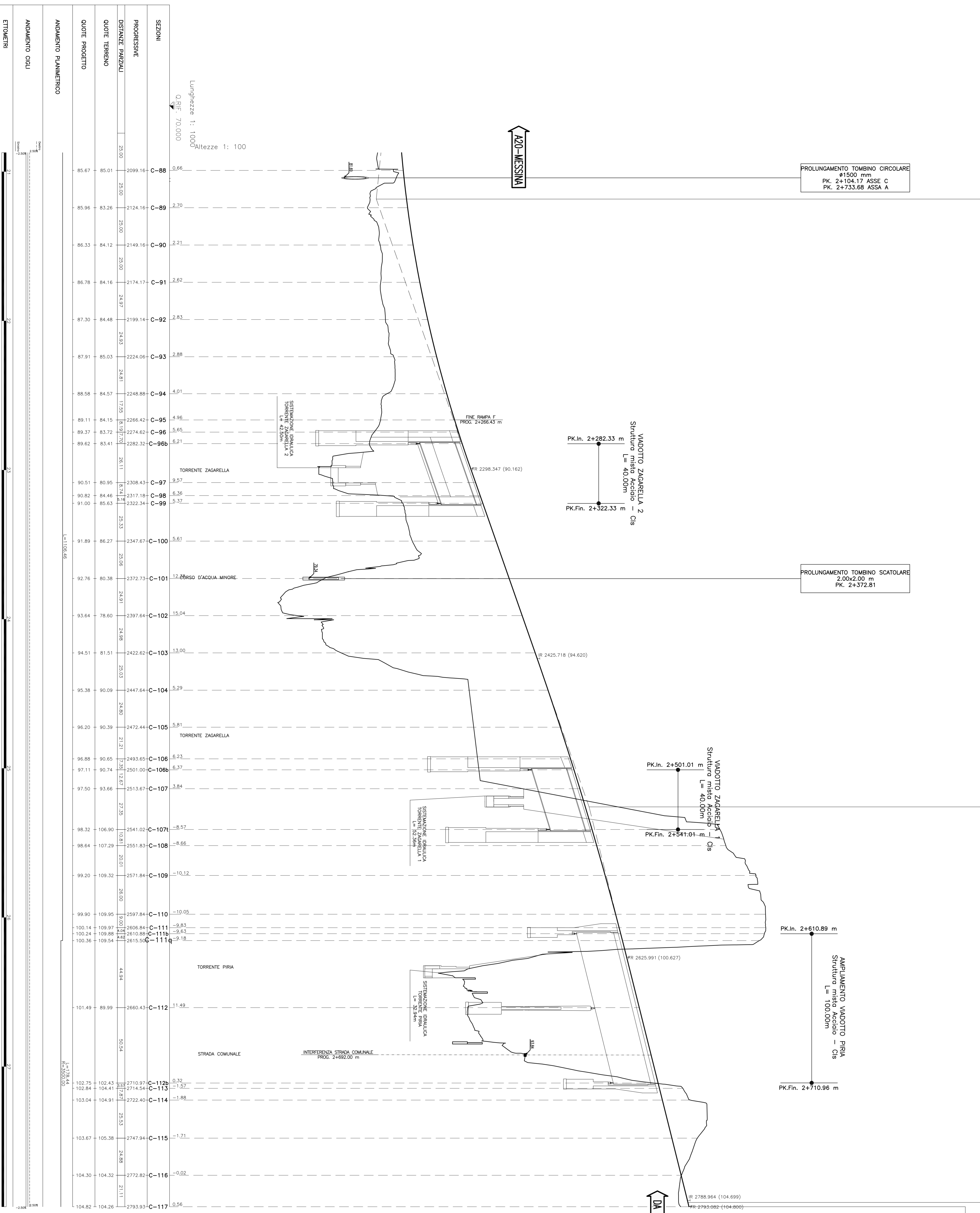
PROVINCIA: CALABRIA
 COMUNE: VILLA SAN GIOVANNI
 REGIONE CALABRIA
 VILLA SAN GIOVANNI

SCALA 1:1000/100

PROF.	2+118.347
Q.	83.862
R.	180.000
T1	180.000
F.	2.000
L.	2.000
SC.	4.000/000

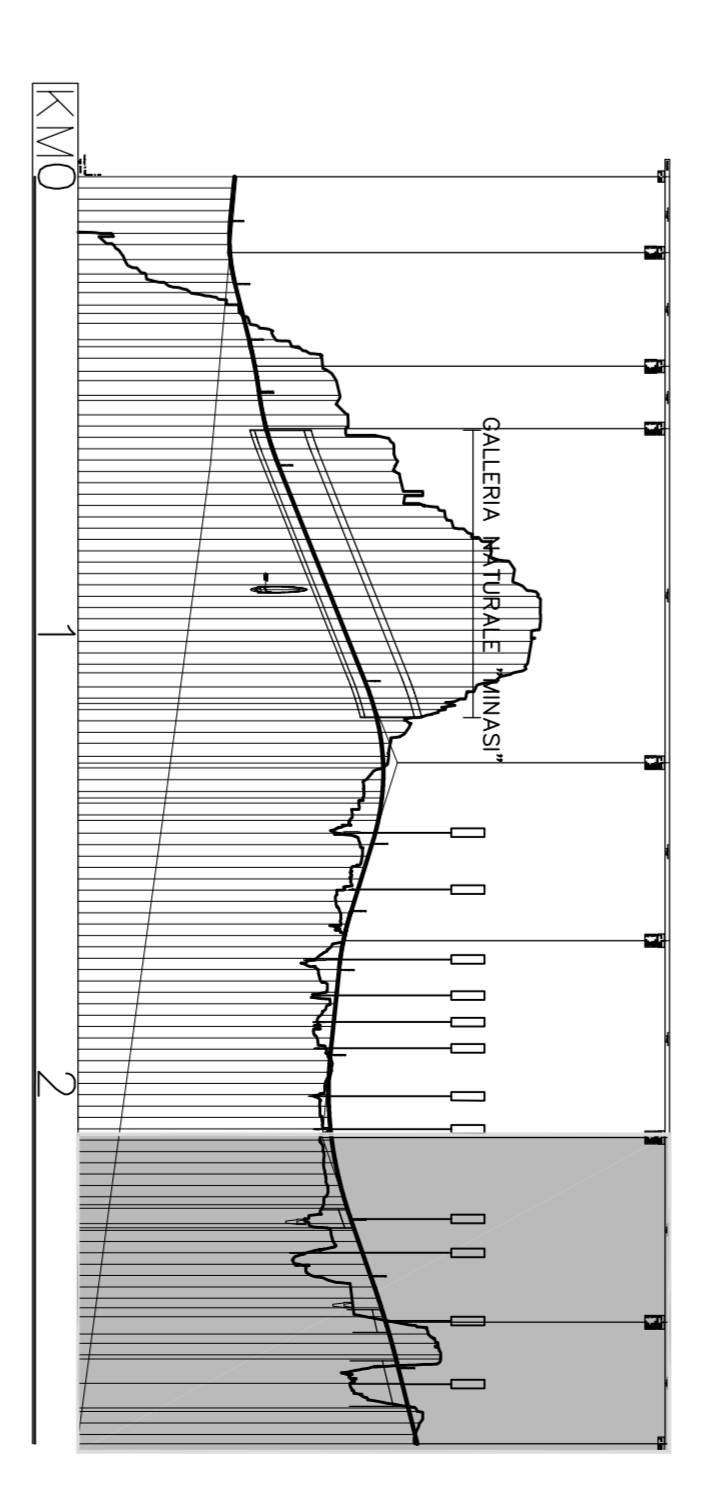
PROF.	2+541.000
Q.	98.124
R.	20000.000
T1	100.000
F.	20.000
L.	20.000
SC.	-1.000/100

PROF.	2+710.960
Q.	104.821
R.	60000.000
T1	2.000
F.	0.000
L.	0.000
SC.	-0.000/000



SEZIONI	PROGRESSIVE	DISTANZE PARZIALI	QUOTE TERRENO	QUOTE PROGETTO	AVANZAMENTO PLANIMETRICO	AVANZAMENTO CICI	ETOMETRI
C-88	2099.16	25.00	85.67	85.01	0.66		
C-89	2124.16	25.00	85.96	83.26	2.70		
C-90	2149.16	25.00	86.33	84.12	2.21		
C-91	2174.17	24.97	86.78	84.16	2.62		
C-92	2199.14	24.93	87.30	84.48	2.83		
C-93	2224.06	24.91	87.91	85.03	2.88		
C-94	2248.88	24.81	88.58	84.57	4.01		
C-95	2266.42	17.55	89.11	84.15	4.96		
C-96	2274.62	8.19	89.37	83.72	5.65		
C-96a	2282.32	7.70	89.62	83.41	6.21		
C-97	2308.43	26.11	90.51	80.95	9.57		
C-98	2317.18	8.75	90.82	84.46	6.36		
C-99	2322.34	5.16	91.00	85.63	5.37		
C-100	2347.67	25.33	91.89	86.27	5.61		
C-101	2372.73	25.06	92.76	80.38	12.38		
C-102	2397.64	24.91	93.64	78.60	15.04		
C-103	2422.62	25.03	94.51	81.51	13.00		
C-104	2447.64	24.80	95.38	90.09	5.29		
C-105	2472.44	24.80	96.20	90.39	5.81		
C-106	2493.65	21.21	96.88	90.65	6.23		
C-106a	2501.00	7.35	97.11	90.74	6.37		
C-107	2513.67	12.67	97.50	93.66	3.84		
C-107a	2541.02	27.35	98.32	106.00	-8.57		
C-108	2551.83	10.81	98.64	107.29	-8.66		
C-109	2571.84	20.01	99.20	109.32	-10.12		
C-110	2597.84	26.00	99.90	109.95	-10.05		
C-111	2606.84	9.00	100.14	109.97	-0.83		
C-111a	2610.88	4.04	100.36	109.88	-0.52		
C-111b	2615.50	4.62	100.36	109.54	-0.82		
C-112	2660.43	44.94	101.49	89.99	11.49		
C-113	2710.97	50.54	102.75	102.43	0.32		
C-114	2722.42	11.45	103.04	104.91	-1.88		
C-115	2747.94	25.52	103.67	105.38	-1.71		
C-116	2772.82	24.88	104.30	104.32	-0.02		
C-117	2793.93	21.11	104.82	104.26	0.56		

NOTE GENERALI



Stretto di Messina
 EuroLink
PONTE SULLO STRETTO DI MESSINA
 PROGETTO DEFINITIVO

EUROLINK S.C.P.A.
 SOCIETA' ITALIANA PER CONDOTTE EVACUATA S.p.A. (Messina)
 COPERTIVA MARCONI E CONDOTTE EVACUATA S.p.A. (Messina)
 SHIKAWAKA - JIYUWA HEAVY INDUSTRIES CO. LTD. (Messina)
 A.C.I. S.C.P.A. - CONSORCIO STABILE (Messina)

COLLEGAMENTI CALABRIA
 INFRASTRUTTURE STRADALI OPERE CIVILI
 RAMO C
 GENERALE
 PROFILO LONGITUDINALE - RAMO C - TAVOLA 4

PROF.	2+710.960
Q.	104.821
R.	60000.000
T1	2.000
F.	0.000
L.	0.000
SC.	-0.000/000