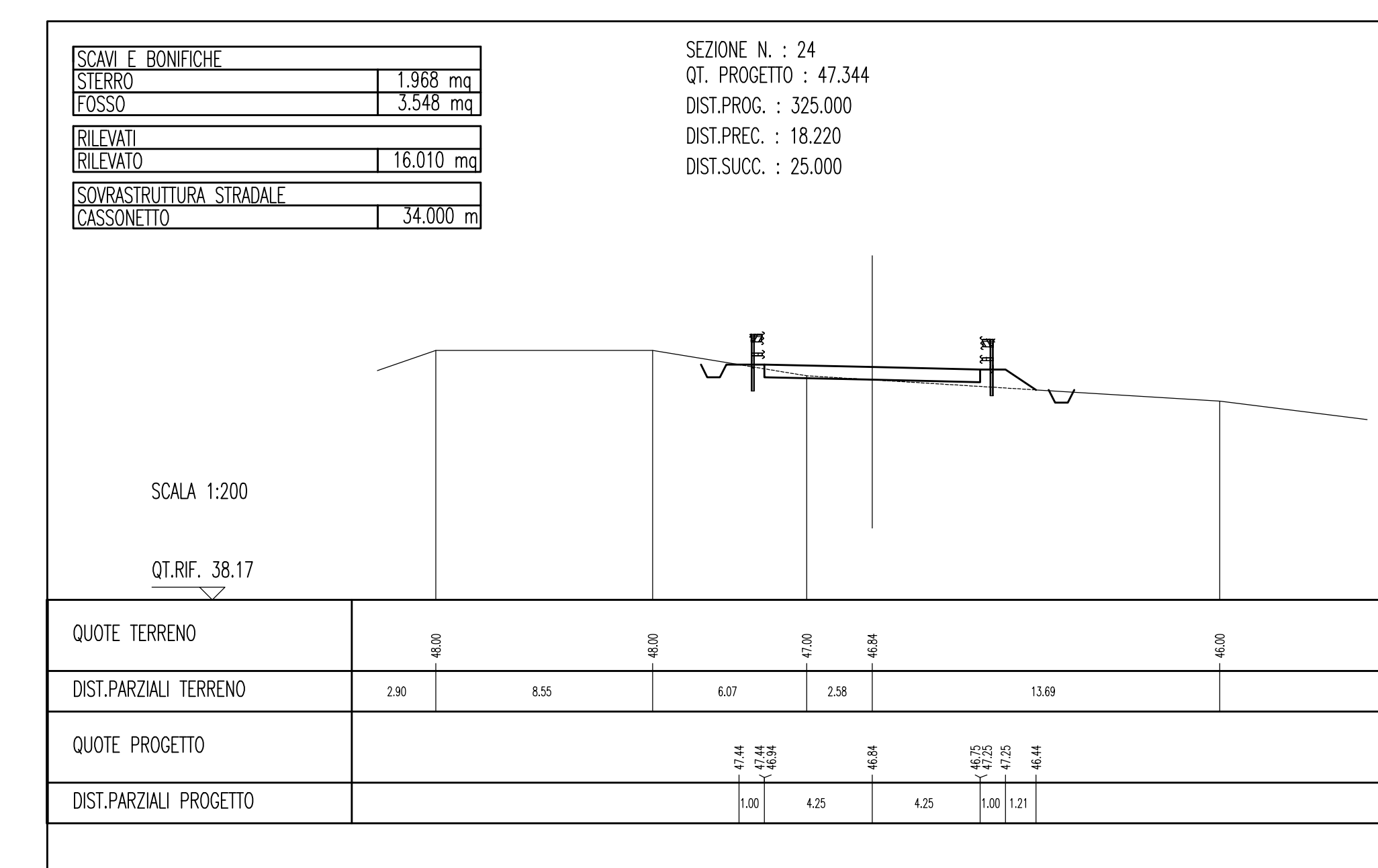
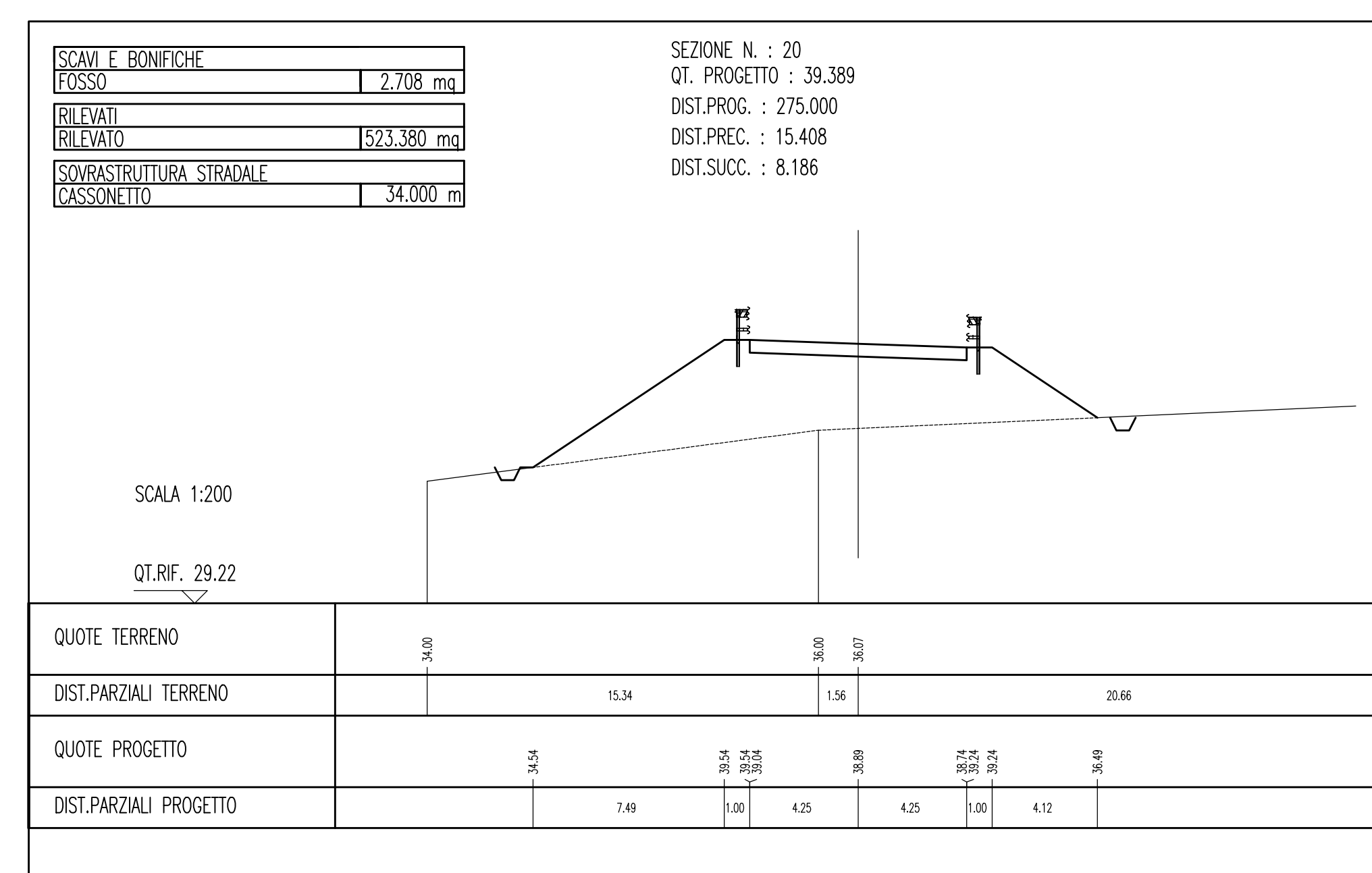
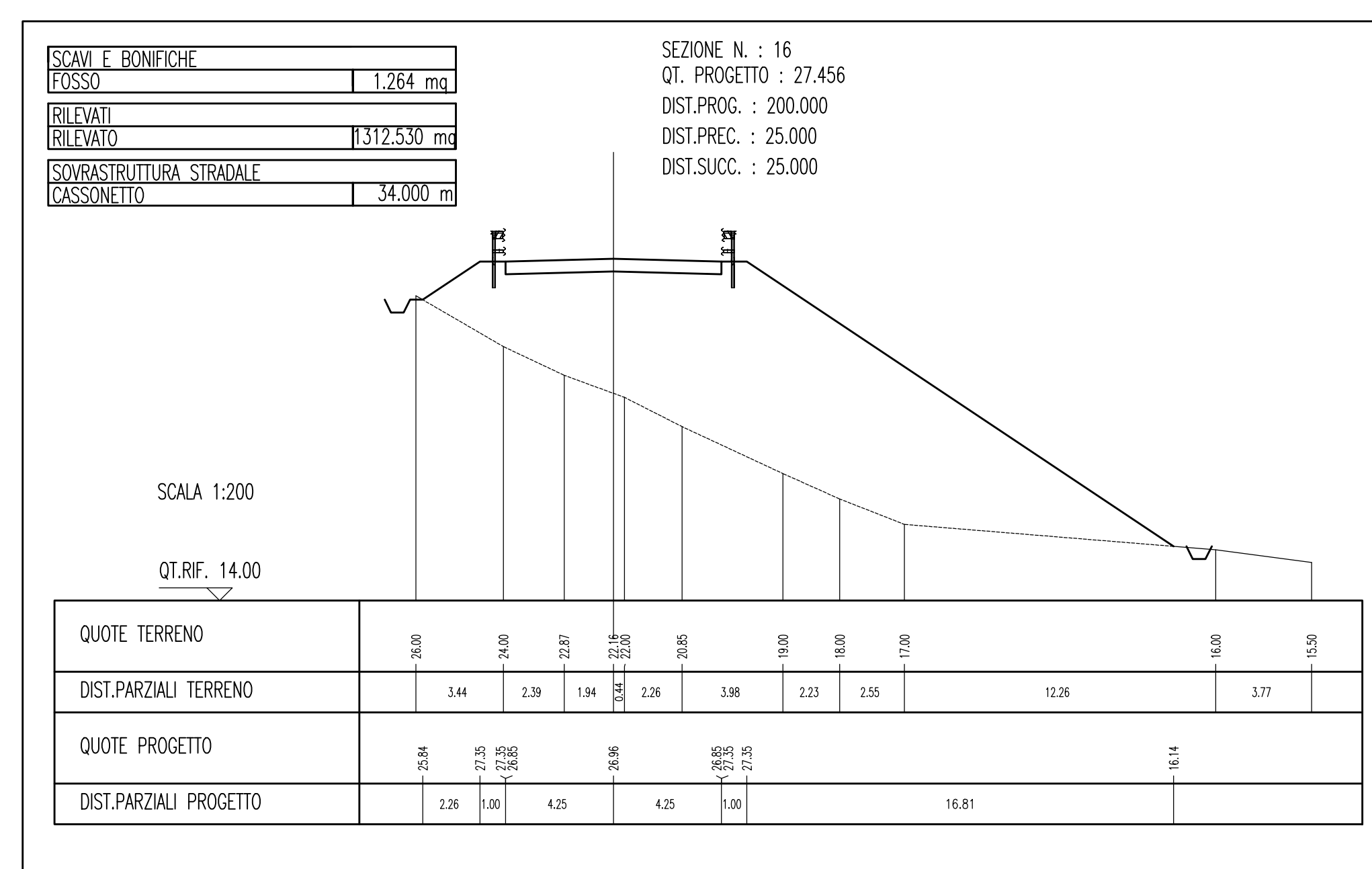
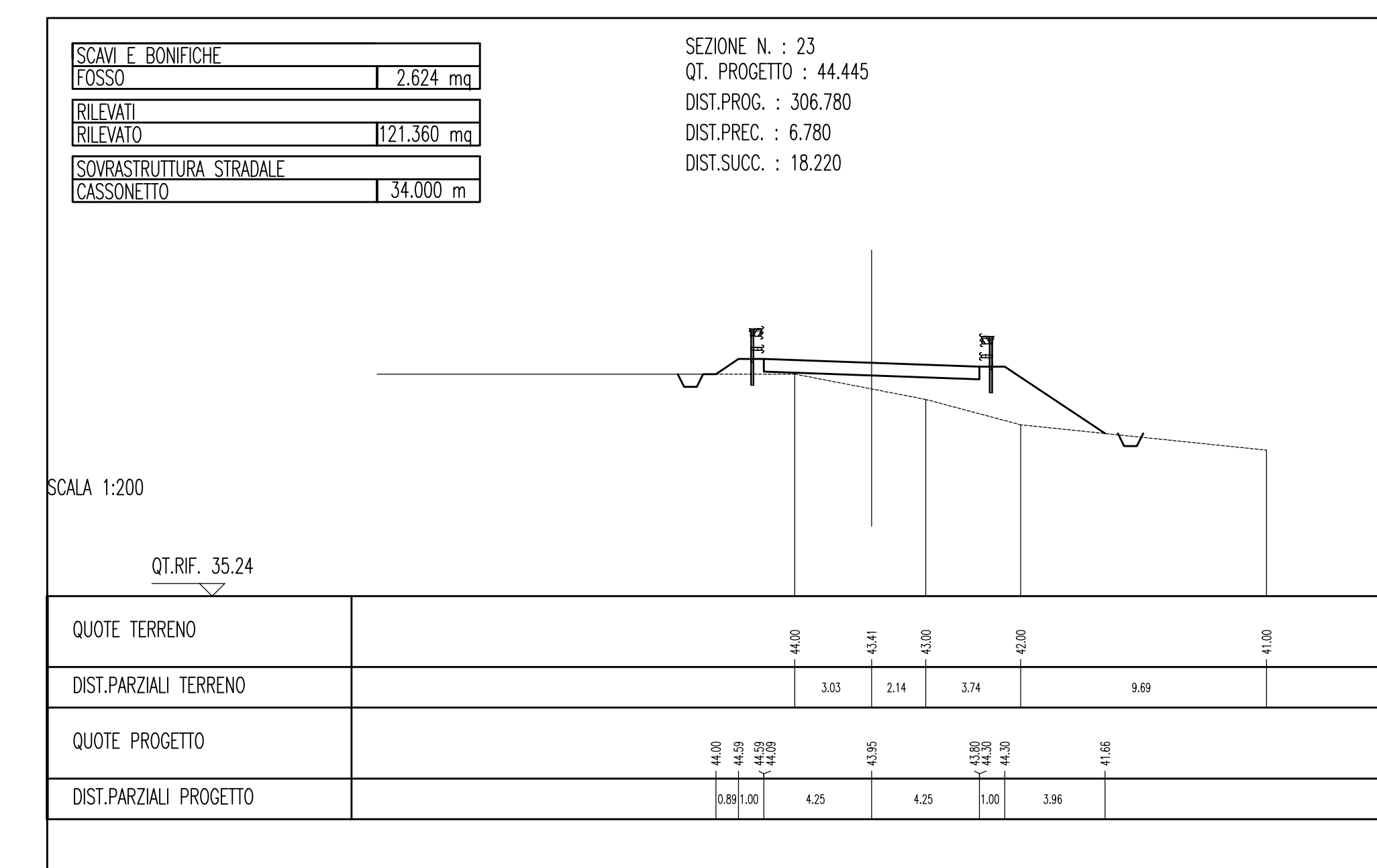
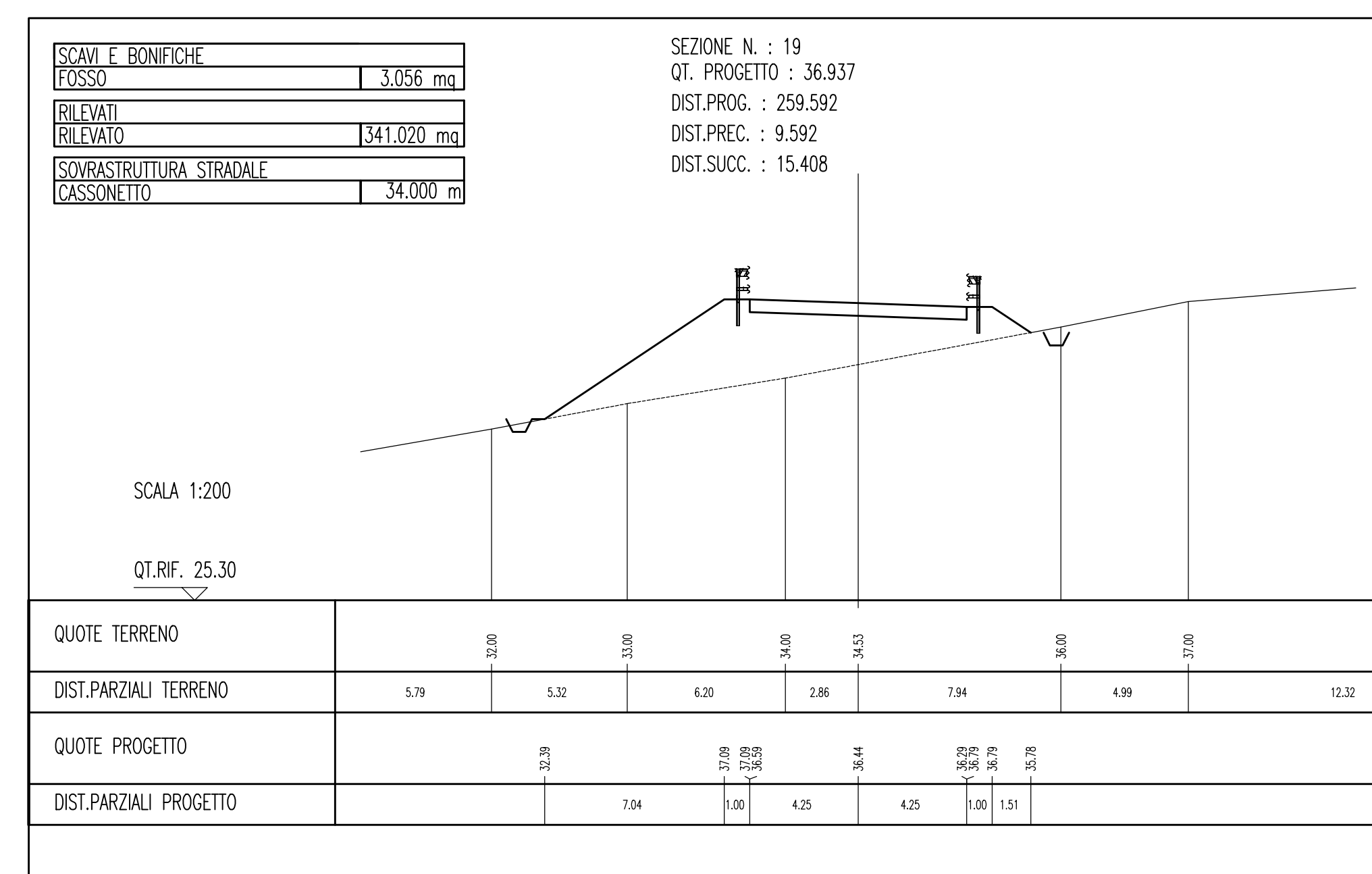
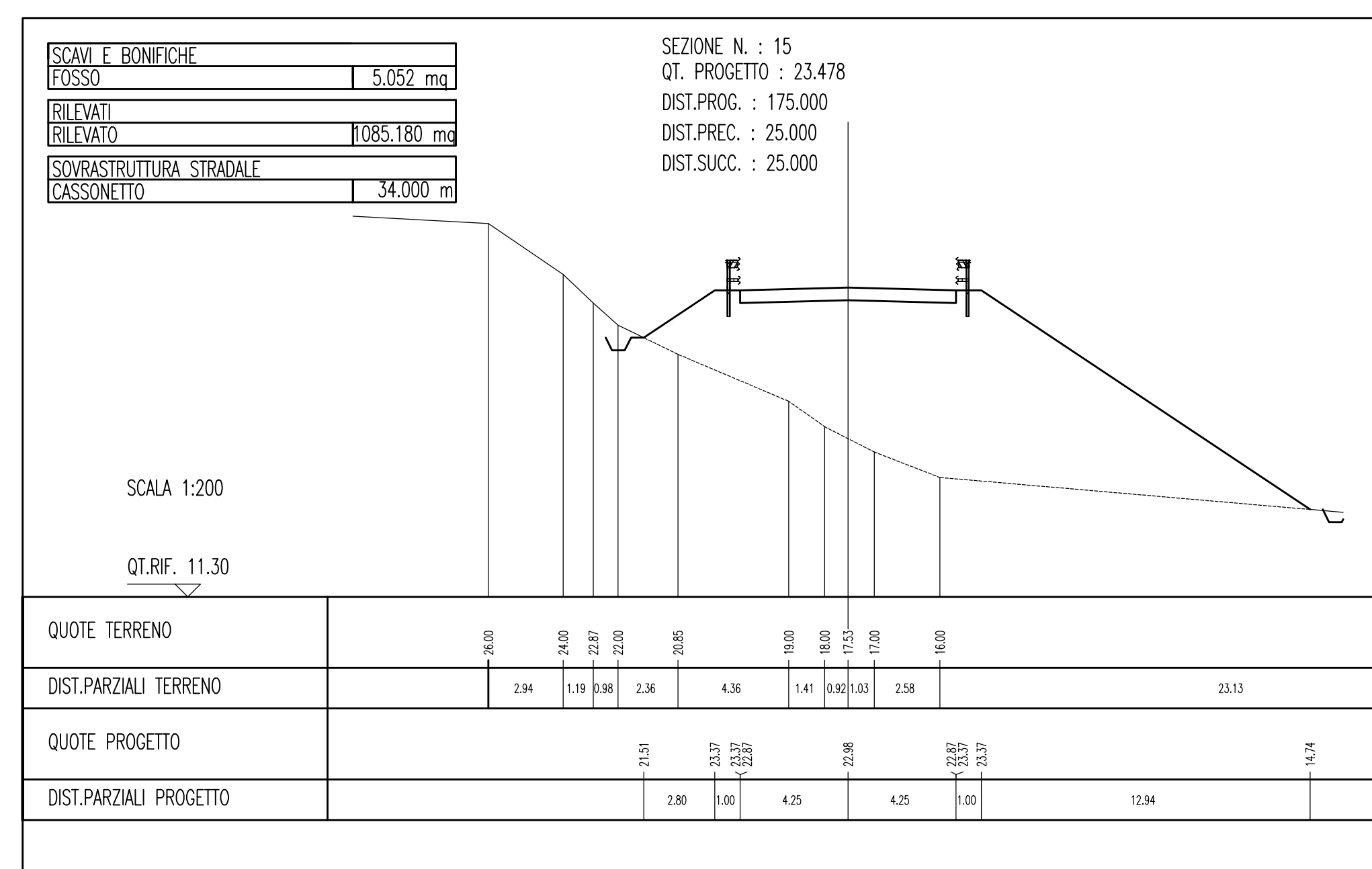
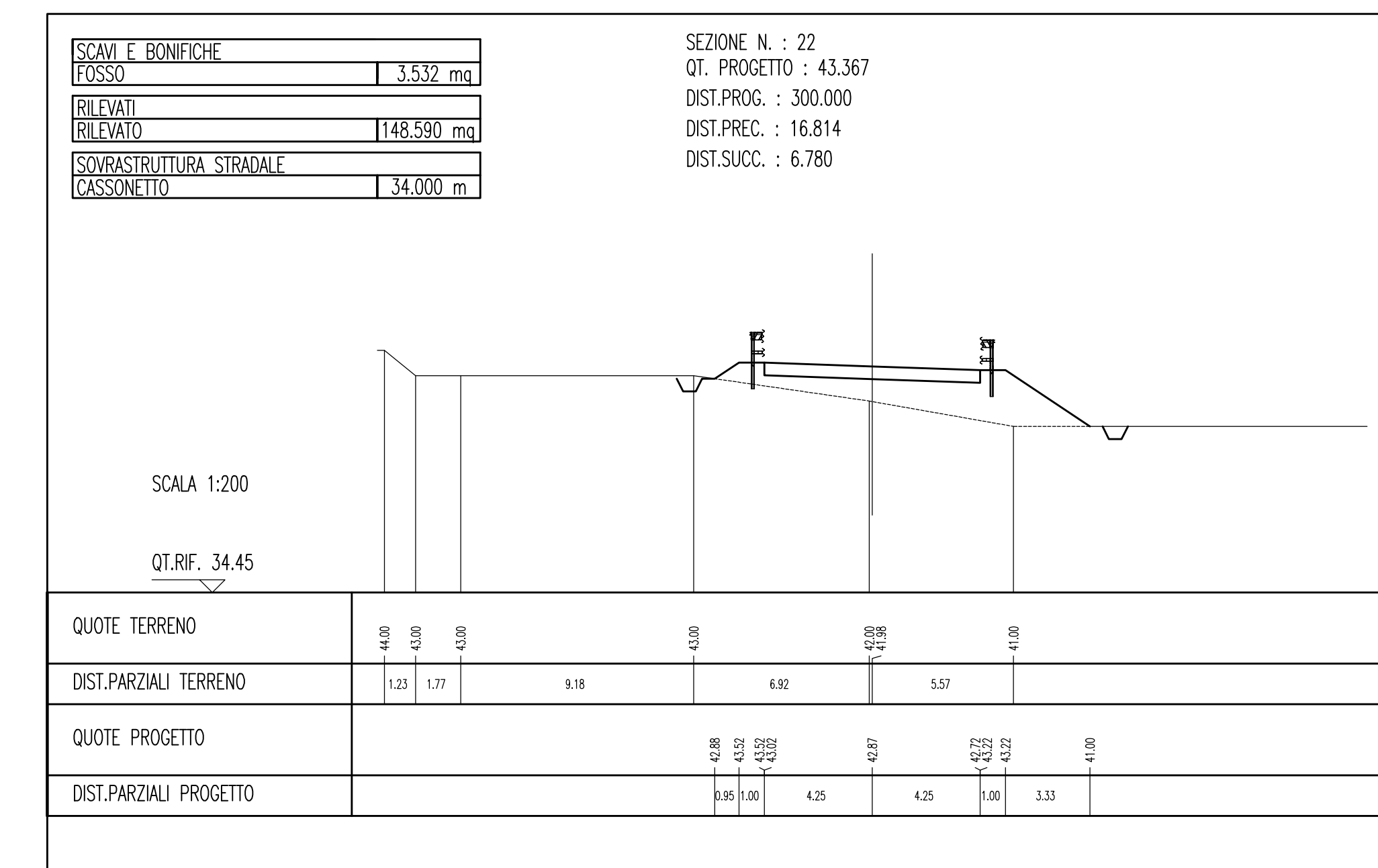
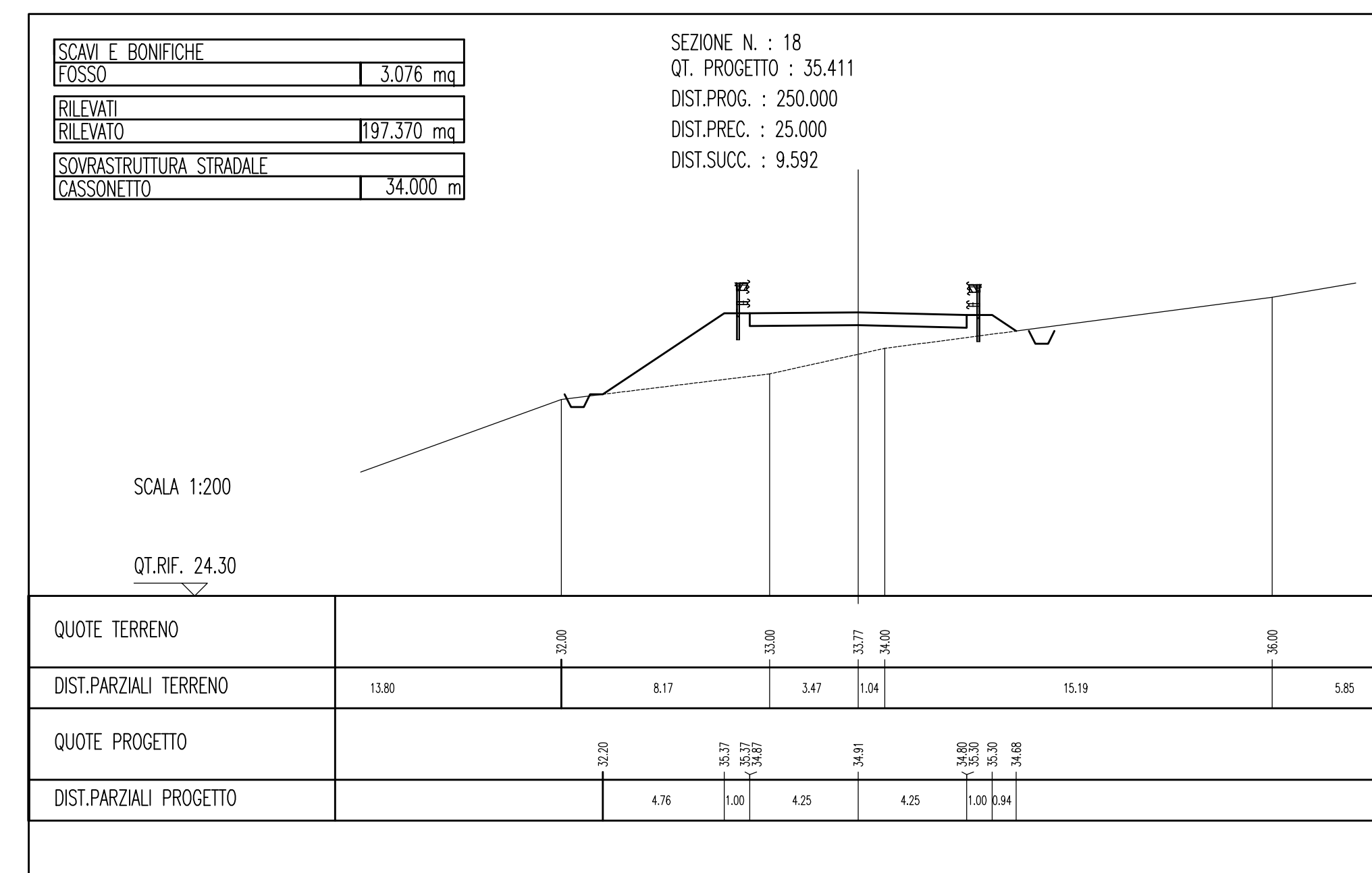
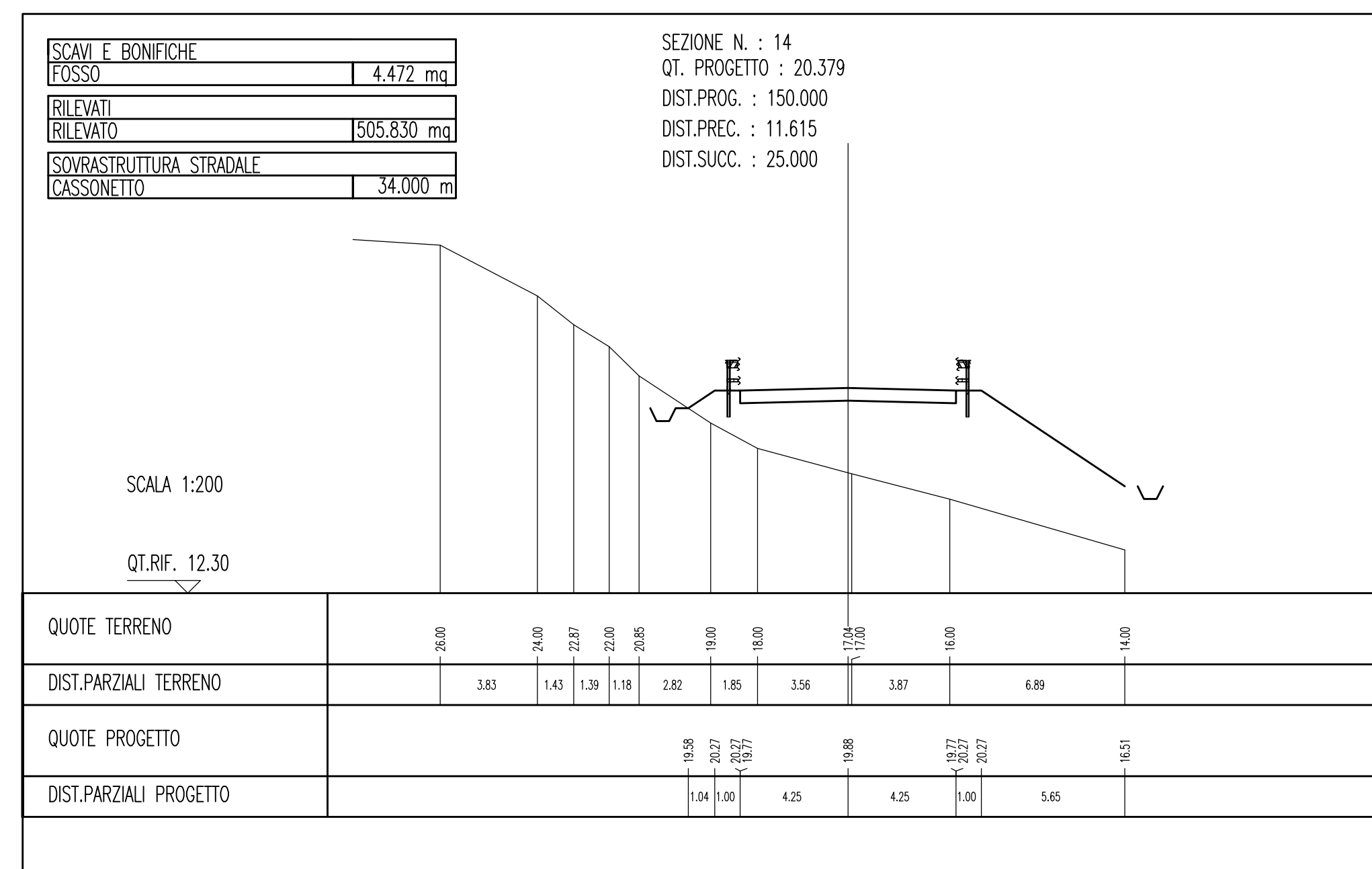
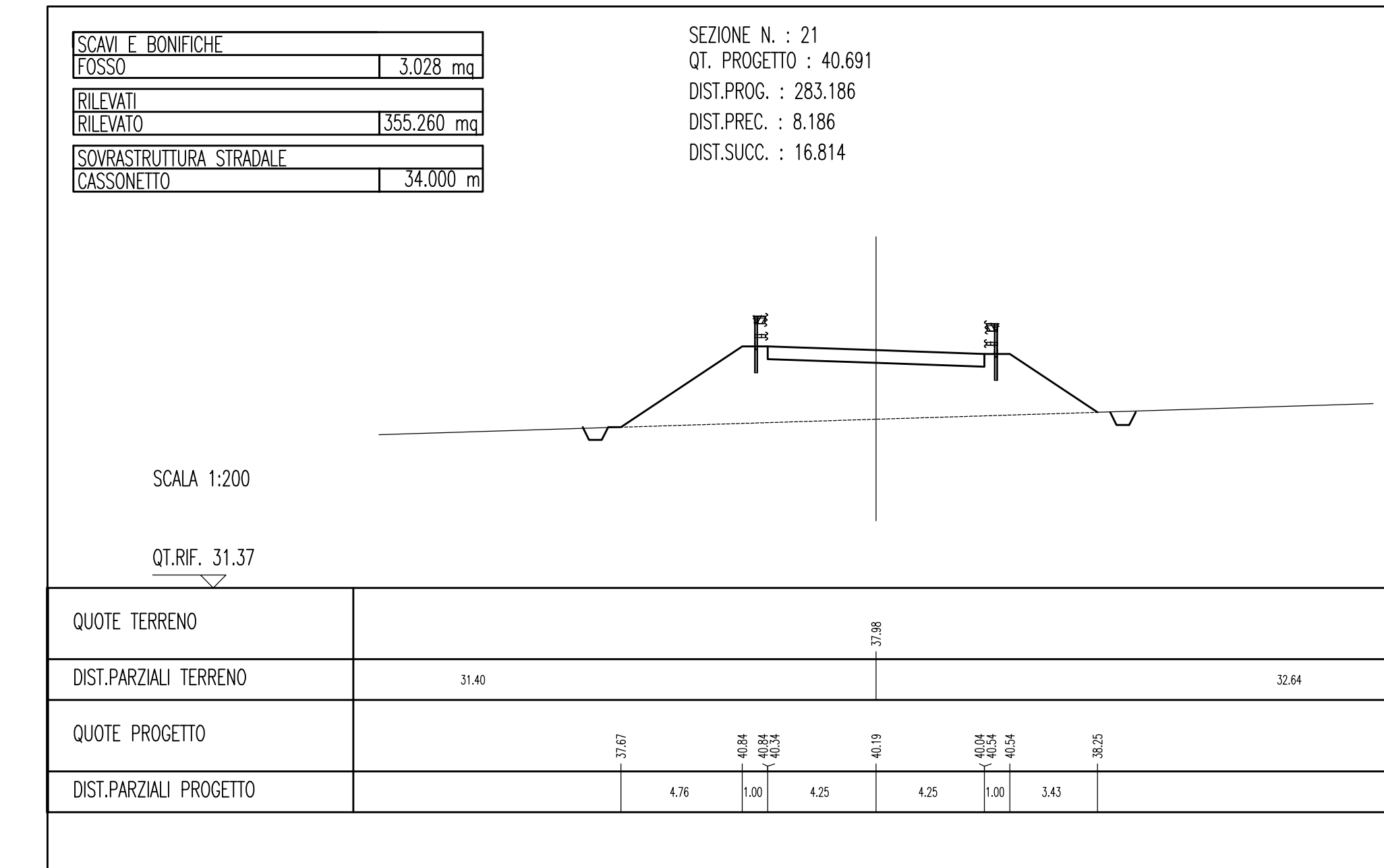
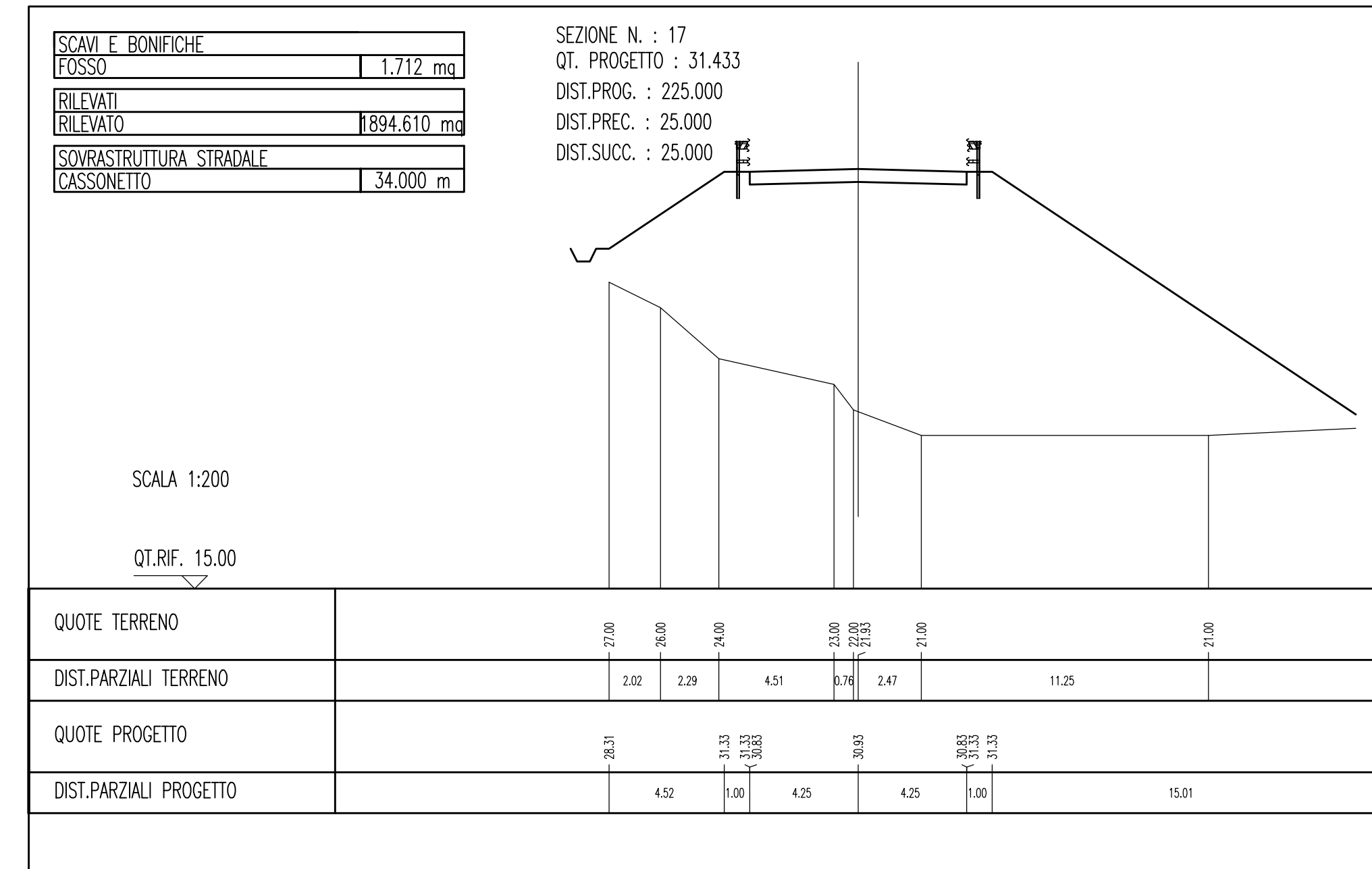
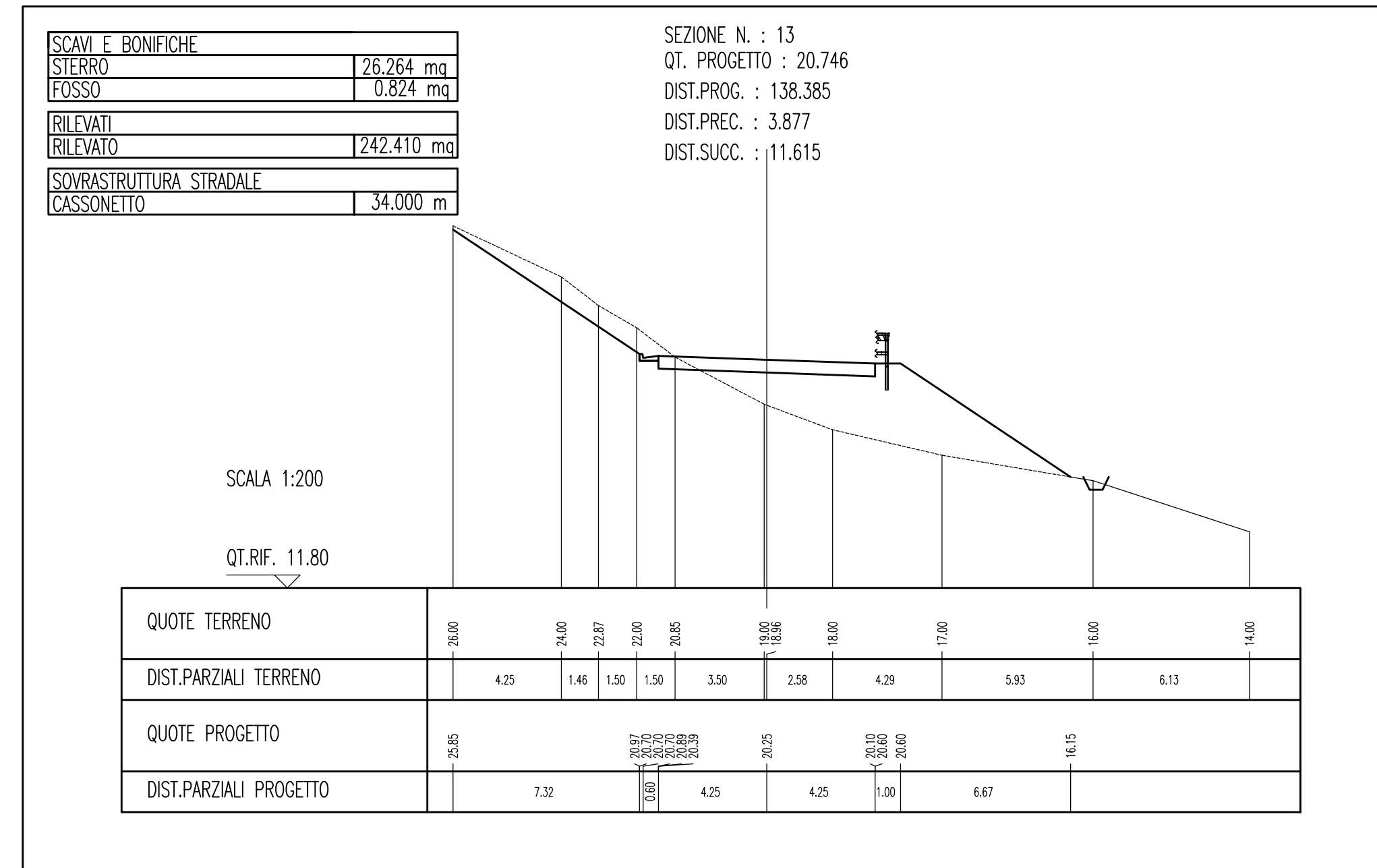


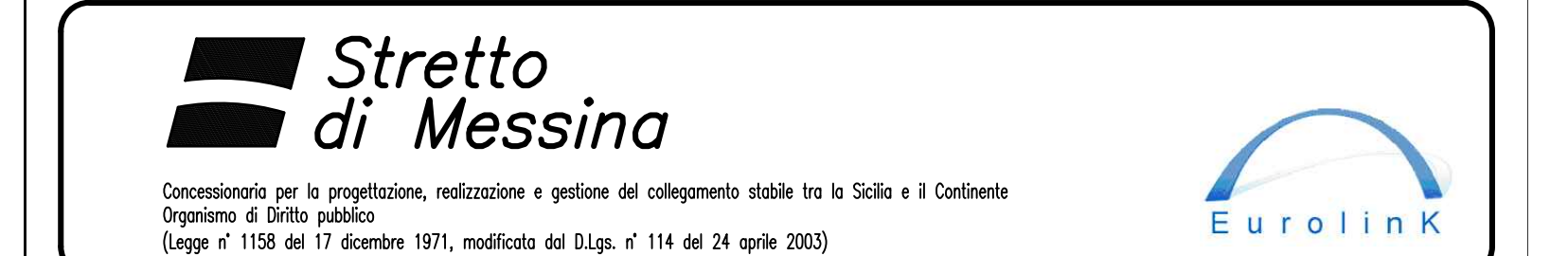
P-SN8 PROGETTO

SEZIONI TRASVERSALI Tratto 5 - Tav 2/3

SCALA 1:200



NOTE GENERALI



PONTE SULLO STRETTO DI MESSINA

PROGETTO DEFINITIVO

EUROLINK S.C.p.A.
IMPREGILO S.p.A. (Mandatario)
SOCIETA' ITALIANA PER CONDOTTE D'ACQUA S.p.A. (Mandante)
COOPERATIVA MURATORI E CEMENTISTI - C.M.C. di Ravenna Soc. Coop. a.r.l. (Mandante)
SACYR S.A.U. (Mandante)
ISHIKAWAJIMA - HARIMA HEAVY INDUSTRIES CO. Ltd. (Mandante)
A.C.I. S.C.P.A. - CONSORZIO STABILE (Mandante)

IL PROGETTISTA
Incaricato tecnico a.c.
Dott. Ing. F. Cavallaro
Ordine Ingegneri Messina
n° 1110

IL CONTRAENTE GENERALE
Project Manager
(Ing. P.P. Marchesetti)

STRETTO DI MESSINA
Direttore Generale e
RUP Valutazione
(Ing. G. Timmenhög)

STRETTO DI MESSINA
Amministratore Delegato
(Dott. P. Gucci)

COLLEGAMENTI VERSANTE SICILIA [CZ0526_F0]
CANTIERI
ITINERARI
NUOVI ITINERARI - NI.82
P-SN8 - SEZIONI TRASVERSALI TRATTO 5 - TAV 2/3

CODICE	C	G	Z	8	0	0	P	W	9	D	S	C	Z	C	N	I	8	2	0	0	0	4	4	F	0	
REV.	20-06-2011																									
DATA																										
DESCRIZIONE	EMISSIONE FINALE																									
REDATTO	CHIOVETTA												FLERES													
VERIFICATO	CHIOVETTA												FLERES													
APPROVATO	BUJOLLO																									