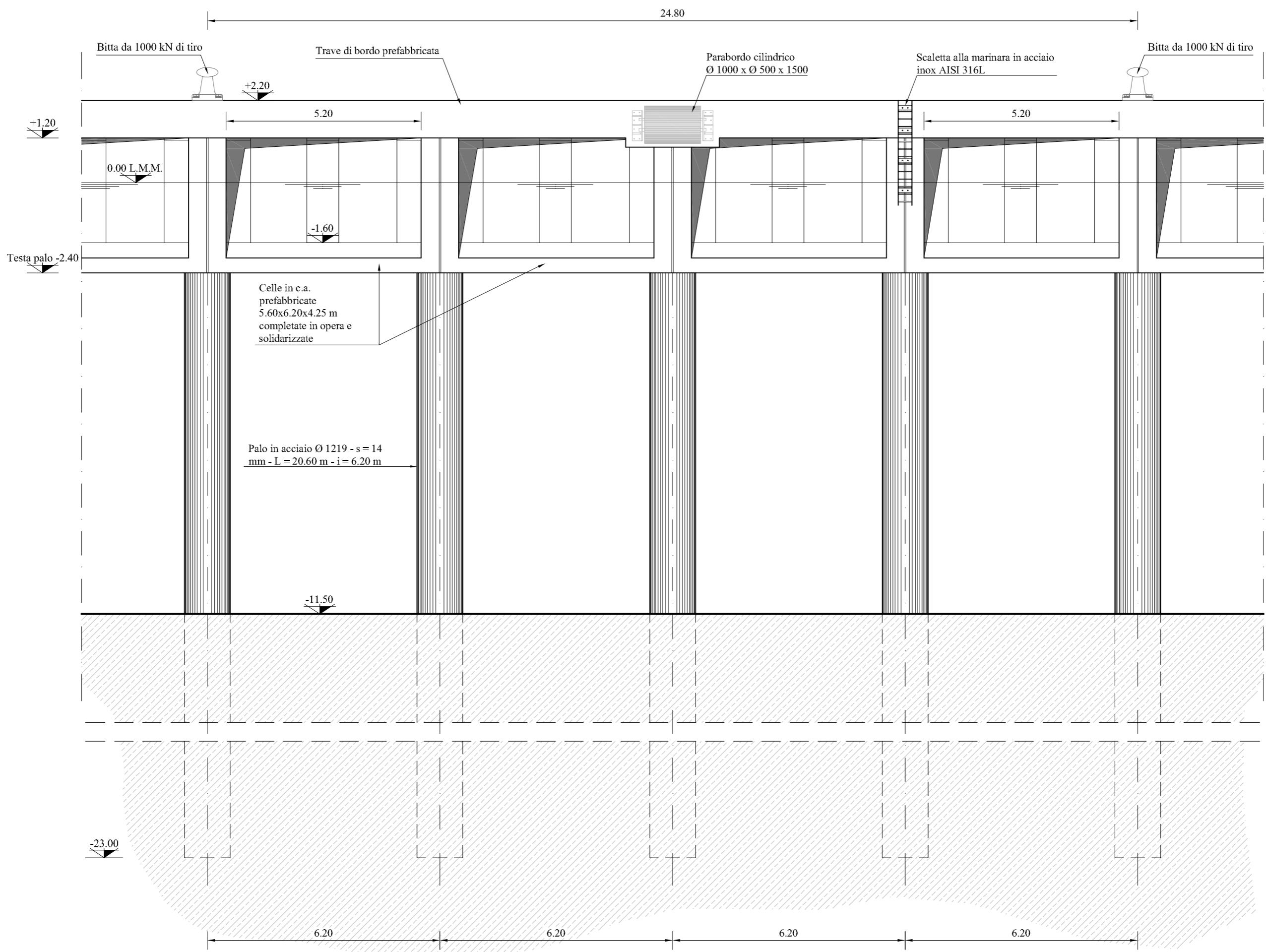
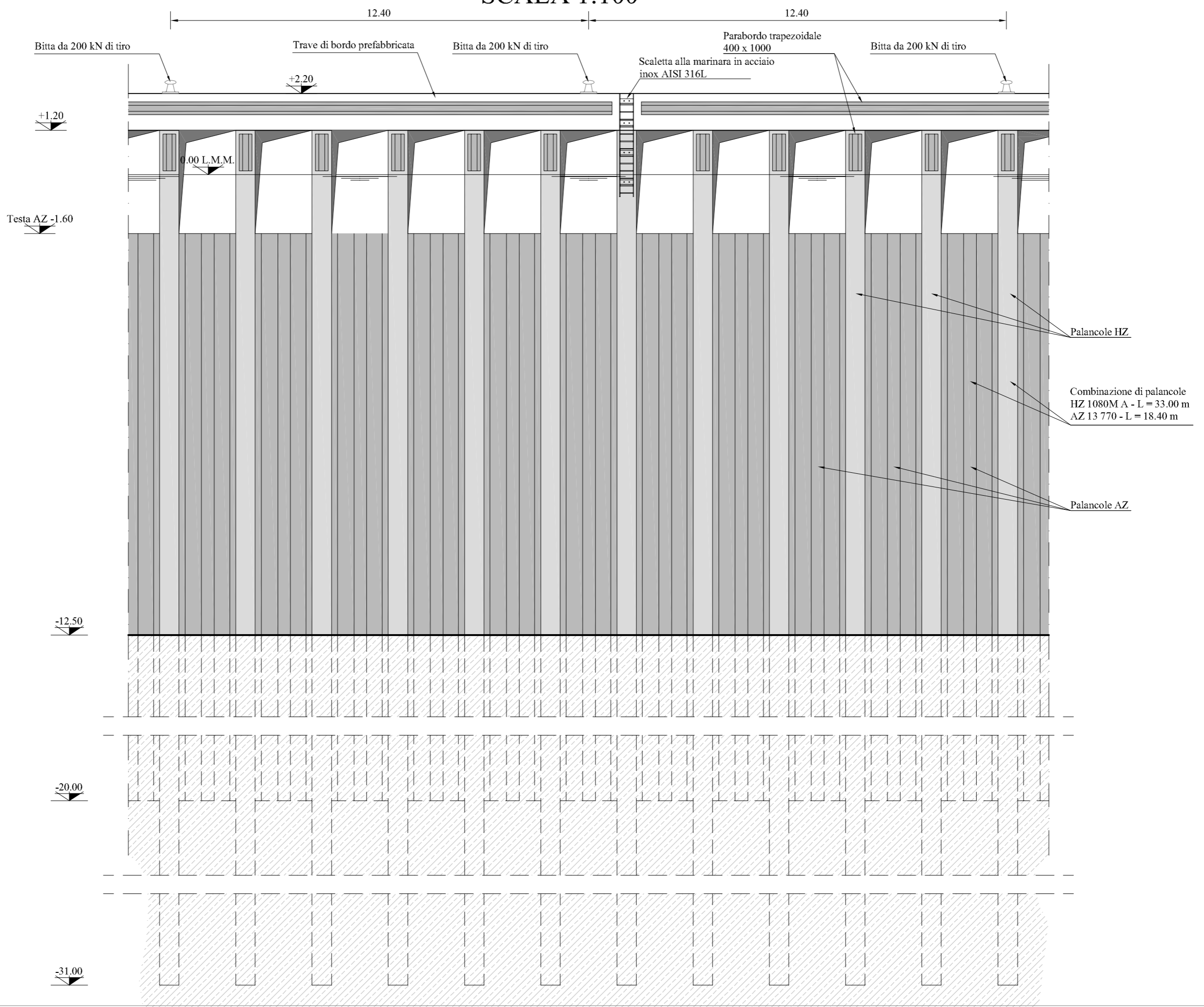



MOLO FORANEO - VISTA SEZIONE TIPO "1"
 SCALA 1:100



MOLO FORANEO - VISTA SEZIONE TIPO "2"
 SCALA 1:100



Tav.	D27.1
Scala:	1:100
ARREDI PORTUALI VISTE MOLO FORANEO	
Data:	MAGGIO 2010
 SIGENCO SISTEMI GENERALI COSTRUZIONI	