

accessibility

clarity



Using a simple and relevant language everyone can understand, even someone without any technical competences, ensuring that the information supplied can be fully exploited

Making environmental information available free of charge within the reach of all. Information and communication technologies are the most effective tools for accessing information



completeness

reliability

Ensuring minimum basic relevant information describing the contents, the alternative scenarios considered, the environmental risks (including health risks) and the cumulative effects in a thorough and logical manner



Supplying environmental information based on scientifically valid methods and updated data derived from secured, easily verifiable and comparable sources, arranged according to recognised national and international standards

promptness

evidence

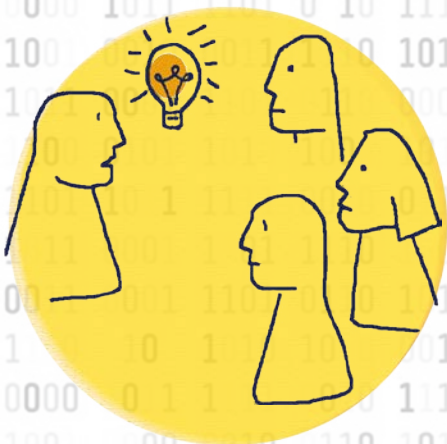
Ensuring real-time information and participation right from the start of the decision-making process, to give everyone the chance to express themselves promptly and participate in the final decision



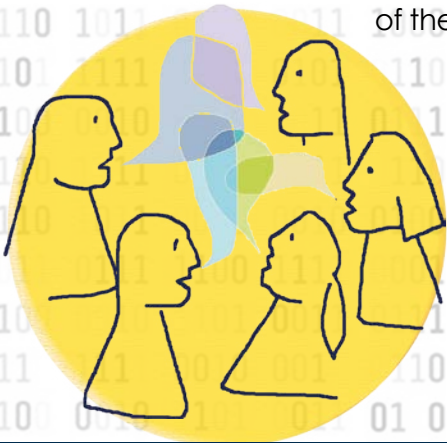
Disseminating the results of public consultations and the information about the players involved in the decision-making process, roles, times, decisions made, documents and comments produced and results of the participation

facilitation

dialogue



Promoting the use of tools methods that facilitate direct citizen involvement in a clear and reasonable dialogue on the risks, benefits and answers identified



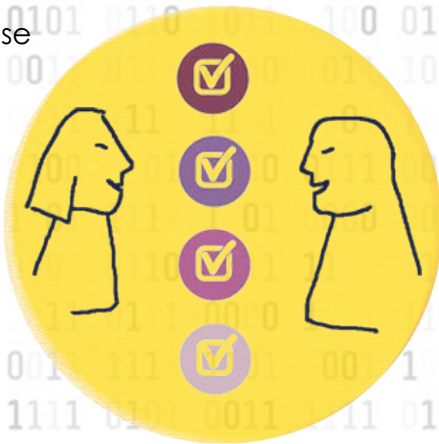
Supporting dialogue and shared choices between developers, evaluators and local communities. Active listening of those affected by the results of the decision-making process, and a transparent and on-going debate on the effects of the decisions made

valorization

acknowledgement



Valorising the participation results, motivating citizens to actively participate in the decision-making process, as this can affect local transformations. Clearly highlighting how citizens' participation has affected the plan/programme or project





<p>reliability</p> <p>acknowledgement</p> <p>valorization</p> <p>facilitation</p> <p>clarity</p> <p>dialogue</p> <p>accessibility</p> <p>promptness</p> <p>completeness</p>	
<p>accessibility</p> <p>ACTIONS/TOOLS</p> <ul style="list-style-type: none"> □ User-friendly environmental assessment websites □ Environmental open data and metadata □ Information and communication technology (ICT) <p>ENVIRONMENTAL ASSESSMENT PROCESS PHASES</p> <p>●  BEFORE</p>	<p>clarity</p> <p>ACTIONS/TOOLS</p> <ul style="list-style-type: none"> □ Summary in non-technical language □ Graphics and images/maps □ Mind maps to summarize the logical steps of technical and methodological contents □ Participation process diaries highlighting the roles of each player, logical steps, assessment criteria □ Targeted training on document language and structure □ Standard forms for Public Administration (decisions), Developers and Proceeding Authorities (public notice), citizens/associations/ Public Administration (comments) <p>ENVIRONMENTAL ASSESSMENT PROCESS PHASES</p> <p>●  BEFORE  DURING</p>
<p>completeness</p> <p>ACTIONS/TOOLS</p> <ul style="list-style-type: none"> □ Guidance documents □ Technical guidelines and regulations for document drafting □ Shared knowledge tools (indicators, models, reference regulations) □ Targeted training on document content □ Reference environmental frameworks <p>ENVIRONMENTAL ASSESSMENT PROCESS PHASES</p> <p>●  BEFORE  DURING</p>	<p>reliability</p> <p>ACTIONS/TOOLS</p> <ul style="list-style-type: none"> □ Quotes from reliable sources □ Reference to sector studies □ Reference to good practices □ Localization/Contextualization of the issues assessed □ Shared databases <p>ENVIRONMENTAL ASSESSMENT PROCESS PHASES</p> <p>●  BEFORE  DURING</p>
<p>promptness</p> <p>ACTIONS/TOOLS</p> <ul style="list-style-type: none"> □ Websites, apps and social network dedicated and updated in real time □ Scoping stage as open as possible to the public □ Synchronizing the information in IT administrative files on environmental assessment procedures with the information published on the relevant websites <p>ENVIRONMENTAL ASSESSMENT PROCESS PHASES</p> <p>●  BEFORE  DURING</p>	<p>evidence</p> <p>ACTIONS/TOOLS</p> <ul style="list-style-type: none"> □ Publication of the comments and summary of the consultation results on websites □ Minimum basic information on the process (launch date, requests and integration acquisitions, suspensions, adoption of the decision, etc.) and documentation availability □ Mapping of the players representative of the different social groups □ Highlighting the participative contribution in “generating alternatives” in different forms (technological, location, strategical), by making sure they are based on shared selection criteria <p>ENVIRONMENTAL ASSESSMENT PROCESS PHASES</p> <p>●  BEFORE  DURING ● AFTER</p>
<p>facilitation</p> <p>ACTIONS/TOOLS</p> <ul style="list-style-type: none"> □ Public debate, public inquiry, forums and hearings open to the public, held when and where citizens and stakeholders can participate □ Facilitators □ Facilitation techniques, with shared times, roles and methods via workshops for experts and forums □ Risk management and communication techniques <p>ENVIRONMENTAL ASSESSMENT PROCESS PHASES</p> <p>●  BEFORE  DURING</p>	<p>dialogue</p> <p>ACTIONS/TOOLS</p> <ul style="list-style-type: none"> □ Environmental observatories □ Permanent expert committees in communication with local communities □ Conflict mediation □ Debate between Administrations and Developers prior to establishing the prescriptive framework <p>ENVIRONMENTAL ASSESSMENT PROCESS PHASES</p> <p>●  BEFORE  DURING ● AFTER</p>
<p>valorization</p> <p>ACTIONS/TOOLS</p> <ul style="list-style-type: none"> □ Information on the effects produced by participation in the decision-making process □ Diffusion of the results and acceptance/ non-acceptance of the proposals submitted, while recognizing the added value of participation □ Communication, awareness, education to participation and capacity building campaigns/events □ E-learning (remote environmental training) <p>ENVIRONMENTAL ASSESSMENT PROCESS PHASES</p> <p> AFTER</p>	<p>acknowledgement</p> <p>ACTIONS/TOOLS</p> <ul style="list-style-type: none"> □ Public acknowledgement of the environmental monitoring results, also through dedicated websites □ Ensuring enough (human and economic) resources for the environmental monitoring and participation process that will follow the entire plan and programme life cycle <p>ENVIRONMENTAL ASSESSMENT PROCESS PHASES</p> <p> DURING ● AFTER</p>